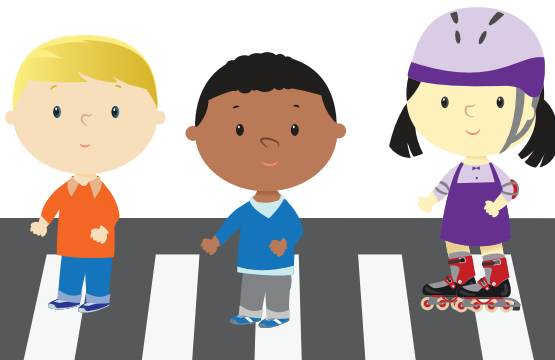
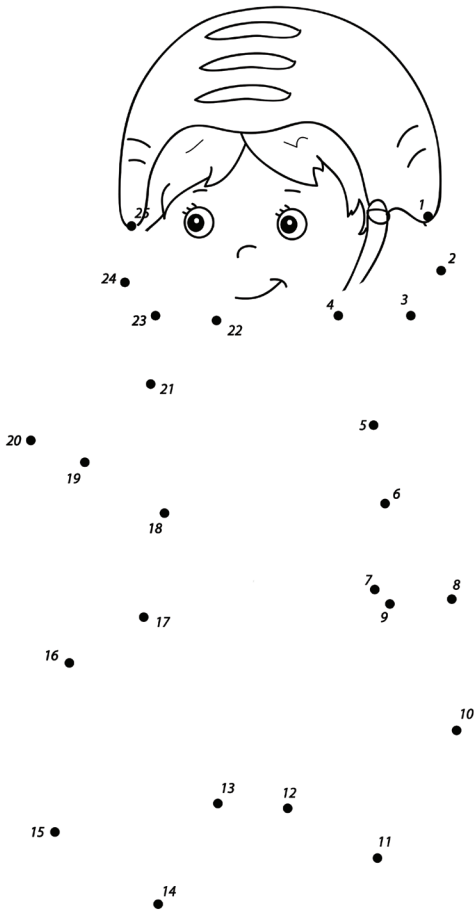


# C Champion for Safety

## BICYCLE & PEDESTRIAN SAFETY

### Bicycle Safety Connect-the-Dots

Start at one and follow the numbers to reveal the picture!



- C** When riding, always wear a helmet that fits your head. Don't forget to fasten the chin strap!
- C** Make sure that drivers can see you! Wear bright colors and something that reflects light (reflective tape on helmet or shoes).
- C** Riders and pedestrians should always cross at intersections, never between parked cars. Look left-right-left before crossing a road.
- C** Obey all traffic laws, signs and signals.
- C** Pay attention! Never ride or walk with headphones that keep you from hearing traffic.

#ChildSafetyFL  
#ArriveAliveFL

A SAFER  
**FLORIDA**  
HIGHWAY SAFETY AND MOTOR VEHICLES

