

**REQUEST FOR PROPOSALS  
FOR THE COLLECTION OF SOLID WASTE  
AND RECYCLABLE MATERIALS**

The City of Sunrise, Florida, currently anticipates that it will release a Request for Proposals (RFP) from qualified vendors that wish to enter into an exclusive franchise agreement for the collection of the residential waste, commercial waste, and construction and demolition debris generated in the City. Under the RFP, the successful vendor will be required to collect residential garbage twice each week in carts, and recyclable materials once each week in carts. Bulky waste and yard waste will be collected manually once each week.

The City of Sunrise has prepared a very preliminary and tentative schedule for its procurement process. The City estimates that the RFP will be issued in February 2016 and the deadline for submitting proposals will be **April 6, 2016**.

*The schedule for this RFP is subject to change. All interested vendors should carefully review the City's RFP, when it is published on DemandStar and the City's website, to determine the actual deadlines that will govern the RFP process.*

All information regarding the City's RFP will be made available on DemandStar ([www.demandstar.com](http://www.demandstar.com)) and the City's website ([www.sunrisefl.gov](http://www.sunrisefl.gov)). Some background information concerning the City's solid waste management system already has been posted on the City's website. Potential vendors should monitor DemandStar and the City's website for further information.

Questions regarding this RFP shall be directed to the City's Purchasing Director, Ann Potter, by telephone (954-572-2276) or e-mail ([apotter@sunrisefl.gov](mailto:apotter@sunrisefl.gov)).

# RESIDENTIAL CUSTOMERS/ COMMERCIAL CONTAINERS SERVICE LEVELS

Number of Commercial Containers at Each Service Level

		Number of Weekly Collections						
		1	2	3	4	5	6	7
Size of Container	1cy	37	23	0	0	0	0	0
	2 cy	70	52	5	1	12	0	0
	3 cy	33	28	8	1	0	2	2
	4 cy	64	52	25	9	4	0	5
	6 cy	25	33	19	3	14	1	3
	8 cy	21	26	22	8	10	2	6

**Total Containers 626**

Number of Residential Units

	Residential Curbside	Residential Mechanical
Class I	19,385	10,232
Class II	Not Applicable	8,941

Number of Residential Accounts

	Residential Curbside	Residential Mechanical
Class I	19,385	665
Class II	Not Applicable	235

		Total yards per Frequency						
		1	2	3	4	5	6	7
Size of Container	1	37	46	0	0	0	0	0
	2	140	208	30	8	120	0	0
	3	99	168	72	12	0	36	42
	4	256	416	300	144	80	0	140
	6	150	396	342	72	420	36	126
	8	168	416	528	256	400	96	336

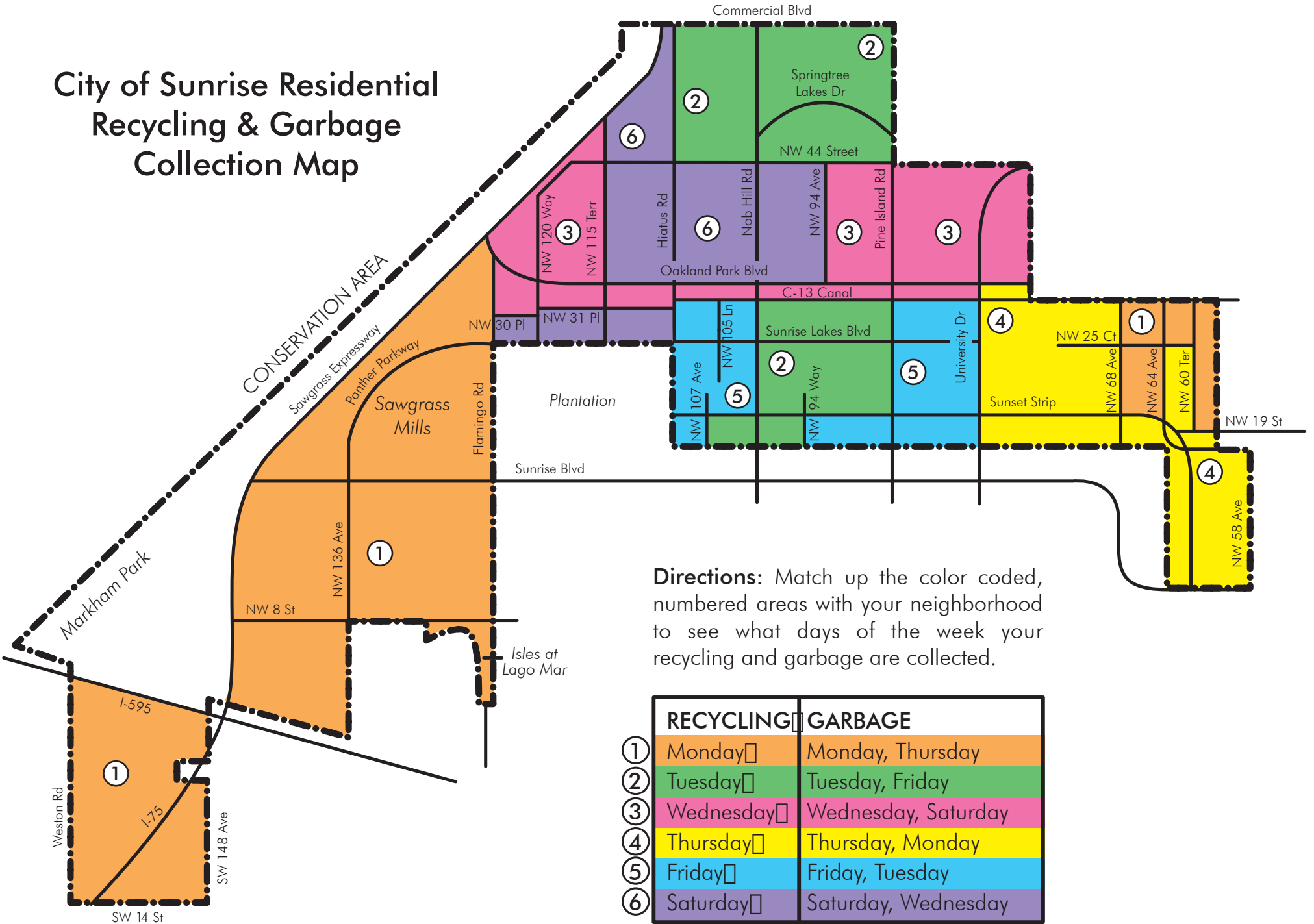
**TOTAL YARDS 6,096**

# RECYCLING IGLOOS

(CURRENTLY IN USE FOR RECYCLING COLLECTION)

<b>COMMUNITIES</b>	<b>IGLOOS ON SITE</b>
Marsh Harbour 8640 NW 38 Street & Surrounding Area	4
Sunrise Springs Condos 3700-3730 NW 88 Avenue & Surrounding Area	3
Waterbridge 1101 & 1103 NW 58 Terrace & Surrounding Area	4
Sunrise Lakes - Phase I 2850 Sunrise Lakes Dr. W. & Surrounding Area	29
Sunrise Lakes - Phase II 8225 Sunrise Lakes Blvd & Surrounding Area	19
Sunrise Lakes - Phase III 9721 Sunrise Lakes Blvd & Surrounding Area	68
Aragon Condos 2541 Aragon Blvd & Surrounding Area	2
Quail Run 2998 Sunrise Lakes Drive East & Surrounding Area	6
Winding Lakes 10101 Winding Lakes Dr. & Surrounding Area	6
Springtree Lakeside Villas 4963 NW 95 Ave & Surrounding Area	4
Welleby Shores 9856 Nob Hill Court & Surrounding Area	4
<b>Total</b>	<b>149</b>

# City of Sunrise Residential Recycling & Garbage Collection Map



**Directions:** Match up the color coded, numbered areas with your neighborhood to see what days of the week your recycling and garbage are collected.

	RECYCLING	GARBAGE
①	Monday	Monday, Thursday
②	Tuesday	Tuesday, Friday
③	Wednesday	Wednesday, Saturday
④	Thursday	Thursday, Monday
⑤	Friday	Friday, Tuesday
⑥	Saturday	Saturday, Wednesday

# SOLID WASTE - RECYCLING - BULK - C&D TONS DELIVERED

<b>FY 2011</b>	<b>SW</b>	<b>REC</b>	<b>Bulk</b>	<b>C&amp;D</b>	<b>FY 2012</b>	<b>SW</b>	<b>REC</b>	<b>Bulk</b>	<b>C&amp;D</b>
Oct '10	5,111.67	242.99	217.76	875.98	Oct '11	4,900.40	419.75	392.42	884.09
Nov	5,393.26	267.56	280.57	1064.07	Nov	5,262.54	444.03	349.03	1053.47
Dec	5,284.77	274.96	246.47	1019.91	Dec	5,342.06	493.7	305.22	1065.50
Jan '11	5,172.09	275.43	263.57	950.20	Jan '12	5,071.81	428.49	326.57	1010.23
Feb	4,623.86	238.74	303.24	910.67	Feb	4,894.52	390.34	370.80	1016.31
Mar	5,328.50	273.84	310.87	1073.58	Mar	5,096.17	372.11	416.31	1027.62
Apr	5,028.64	249.48	363.12	971.28	Apr	5,224.41	404.67	423.94	831.52
May	5,148.01	280.87	300.87	968.77	May	5,540.09	435.97	331.40	1044.89
Jun	5,133.47	280.29	343.79	1021.92	Jun	5,272.96	419.30	438.70	883.62
Jul	5,296.23	235.09	316.74	995.73	Jul	5,358.08	427.31	591.70	1046.17
Aug	5,609.17	<b>440.26</b>	321.02	1143.39	Aug	5,560.50	419.27	576.73	1097.58
Sept	5,001.80	400.02	399.86	896.42	Sept	4,993.12	391.75	605.92	889.65
<b>TOTAL</b>	<b>62,131.47</b>	<b>3,459.53</b>	<b>3,667.88</b>	<b>11,891.92</b>	<b>TOTAL</b>	<b>62,516.66</b>	<b>5,046.69</b>	<b>5,128.74</b>	<b>11,850.65</b>
<b>AVG.</b>	<b>5177.62</b>	<b>288.29</b>	<b>305.66</b>	<b>990.99</b>	<b>AVG.</b>	<b>5209.72</b>	<b>420.56</b>	<b>427.40</b>	<b>987.55</b>

<b>FY 2013</b>	SW	REC	Bulk	C&D	<b>FY 2014</b>	SW	REC	Bulk	C&D
Oct '12	5,289.34	435.98	545.67	956.83	Oct '13	4,820.77	418.44	500.13	1048.99
Nov	4,920.23	424.67	506.12	1067.05	Nov	5,139.97	406.29	563.37	980.46
Dec	4,827.57	431.75	503.64	1079.40	Dec	5,230.74	428.04	485.16	828.56
Jan '13	4,799.06	486.97	333.06	907.33	Jan '14	5,282.97	<b>454.42</b>	451.02	610.70
Feb	4,490.66	358.00	302.50	473.13	Feb	5,217.25	321.79	589.16	487.09
Mar	4,758.58	361.11	381.24	984.11	Mar	5,156.15	346.05	548.98	429.45
Apr	5,026.54	421.92	392.74	671.32	Apr	5,638.85	376.67	572.70	648.41
May	5,230.75	427.65	476.54	1207.23	May	5,444.91	385.57	477.66	705.21
Jun	4,773.99	387.70	343.97	800.30	Jun	5,100.71	383.49	592.35	708.14
Jul	<b>4,900.08</b>	<b>547.26</b>	488.62	759.11	Jul	5,746.90	400.27	586.40	753.07
Aug	5,784.05	457.92	611.32	881.22	Aug	5,403.19	388.68	616.71	1527.69
Sept	5,109.07	379.37	497.46	664.79	Sept	5,725.74	415.11	579.51	986.65
<b>TOTAL</b>	<b>59,909.92</b>	<b>5,120.30</b>	<b>5,382.88</b>	<b>10,451.82</b>	<b>TOTAL</b>	<b>63,908.15</b>	<b>4,724.82</b>	<b>6,563.15</b>	<b>9,714.42</b>
<b>AVG.</b>	<b>4992.49</b>	<b>426.69</b>	<b>448.57</b>	<b>870.99</b>	<b>AVG.</b>	<b>5325.68</b>	<b>393.74</b>	<b>546.93</b>	<b>809.54</b>

<b>FY 2015</b>	<b>SW</b>	<b>REC</b>	<b>Bulk</b>	<b>C&amp;D</b>
Oct '14	5,679.98	403.60	527.75	968.00
Nov	5,211.00	375.18	503.14	529.63
Dec	<b>5,931.42</b>	475.93	403.70	985.11
Jan '15	5,688.00	437.32	475.40	824.02
Feb	5,542.54	347.81	479.88	679.65
Mar	5,930.52	430.99	463.05	920.47
Apr	5,896.09	410.19	499.59	865.8
May	5,550.08	418.88	595.63	880.33
Jun	5,787.52	384.4	506.03	925.44
Jul	5,906.28	404.77	539.33	1068.39
Aug	5,576.76	413.95	628.78	1178.24
Sept	5,424.33	426.34	523.28	949.13

<b>TOTAL</b>	<b>68,124.52</b>	<b>4,929.36</b>	<b>6,145.56</b>	<b>10,774.21</b>
<b>AVG.</b>	<b>5677.04</b>	<b>410.78</b>	<b>512.13</b>	<b>897.85</b>

TOWNHOMES/CONDOMINIUMS (ATTACHED HOMES) WITH CURBSIDE SOLID WASTE AND RECYCLING SERVICE

Properties West of Flamingo Road (Map 1)

ID #	Name of Community	Service Code	# of Units	Garage / Storage Available	Parking / Program Issues	Comments
1	Allegro	S1	233	Yes	Yes	Streets are very narrow, no sidewalks, containers are placed on street. Very congested area.
2	Lakeside Villas at Bonaventure	S1	58	Yes	No	No current issues with curbside recycling cart collection
3	Las Brisas	S1	94	Yes	No	No current issues with curbside recycling cart collection
4	Riverwalk	S1	103	Yes	No	No current issues with curbside recycling cart collection

488

Properties West of Nob Hill Road and East of Flamingo Road (Map 2)

ID #	Name of Community	Service Code	# of Units	Garage / Storage Available	Parking / Program Issues	Comments
5	Country Squire	M1	109	No	Yes	Containers placed on NW 29 Manor along swale. May have storage issues with 2nd cart.
6	Entrada of Sunrise	S1	85	Yes	Yes	Long stretch of road with limited turning radius, truck must back up once one side of community is completed.
7	Northlake Townhomes	S1	52	No	Yes	Townhomes, no garage. May have issues with a 2nd cart.
8	Sunrise Manor	S1	56	No	Yes	Containers placed behind parking spaces (street) on collection day. May have storage issues with 2nd cart.
9	Sunrise Manor South	S1	70	No	Yes	Containers placed behind parking spaces (street) on collection day. May have storage issues with 2nd cart.
10	Sunrise Manor West	S1	64	Yes	No	Duplexes with Garage. No current issues with curbside recycling cart collection.

436

A	Rhapsody at Welleby - Single Family	S1	118	Yes	No	Single Family Homes - Opted to Remain on Carts (HOA) Stating Truck Accessibility Issues Caused By Street Parking
B	Lago Welleby/Sugar Bay - Single Family	S1	49	Yes	Yes	Single Family Homes - Currently Utilizing Recycling Carts - Narrow Roads, Dead Ends, May Pose Challenge With 2nd Cart.

Properties West of University Drive and East of Nob Hill Road (Map 3)

ID #	Name of Community	Service Code	# of Units	Garage / Storage Available	Parking / Program Issues	Comments
11	Evergreen Lakes	S1	64	Yes	No	No current issues with curbside recycling cart collection
12	Fairway Club	S1	80	No	Yes	Containers placed behind parking spaces (street)/swale on collection day. May have storage issues with 2nd cart.
13	Kingsley Commons	S1	187	Some	Yes	Majority without garage. Containers placed behind parking spaces during collection. May have storage issues.
14	Lakeshore	S1	72	No	Yes	Containers placed behind parking spaces (street)/swale on collection day. May have storage issues with 2nd cart.
15	Maple Leaf Patio Villas	S1	56	No	Yes	Containers placed behind parking spaces (street)/swale on collection day. May have storage issues with 2nd cart.
16	Northwood	S1	60	No	Yes	Containers placed behind parking spaces (street) on collection day. May have storage issues with 2nd cart.
17	Park Terrace	S1	149	Yes	Yes	HOA expressed concerns with cart storage and chose not to participate in the City's pilot program.
18	Pine Bay	S1	218	Yes	No	No current issues with curbside recycling cart collection
19	Red Bridge	S1	132	Some	Yes	Many program recycling carts currently stored in front of residential units. May have storage issues.
20	Southwind Cove	S1	260	Yes	No	No current issues with curbside recycling cart collection
21	Springtree Gardens	S1	42	Yes	No	No current issues with curbside recycling cart collection
22	Springtree Villas	S1	52	No	Yes	Narrow roads, containers placed behind parking spaces on collection day. May have storage issues.
23	Stockbridge	S1/M1	55	Some	Yes	Mixture of SF & Townhomes, some with garage. Containers placed behind parking spaces on collection day.
24	Sunblest	S1	203	No	Yes	Containers placed behind parking spaces (street)/swale on collection day. May have storage issues with 2nd cart.
25	The Landings at Welleby Lakes	S1	85	No	Yes	Containers placed behind parking spaces (street)/swale on collection day. May have storage issues with 2nd cart.
26	Tradewinds	S1	144	Yes	No	No current issues with curbside recycling cart collection
27	Villas Del Sol	S1	60	No	Yes	May have storage issues with 2nd cart.
28	Waterside Villas	S1	88	No	Yes	18 gal. recycling bins used. Limited storage. Placed behind parking spaces/swales on collection day.

2,007



**Properties East of University Drive (Map 4)**

ID #	Name of Community	Service Code	# of Units	Storage Available	Program Issues	Comments
29	Brentwood Manors I	S1	22	Some	Yes	Majority without garage. May have storage issues with 2nd cart.
30	Brentwood Manors II	S1	72	Some	Yes	Majority without garage. May have storage issues with 2nd cart.
31	Condo # 1	M1	4	No	Yes	Two units individually metered. Curbside garbage, no sign of recycling carts. Storage issues with 2nd cart.
32	Condo # 2	M1	6	No	Yes	Curbside garbage, no sign of recycling carts. Storage issues with 2nd cart.
33	Condo # 3	M1	6	No	Yes	Curbside garbage, no sign of recycling carts. Storage issues with 2nd cart.
34	Green Gable, Inc.	M1	6	No	Yes	Curbside garbage, no sign of recycling carts. Storage issues with 2nd cart.
35	Parkview # 5	M1	7	No	Yes	Curbside garbage, no sign of recycling carts. Storage issues with 2nd cart.
36	Del Rio Village	M1	120	No	Yes	Containers placed behind parking spaces (street)/swale on collection day. May have storage issues with 2nd cart.
37	Fairways of Sunrise	S1	119	Yes	Yes	Narrow Streets, although currently utilizing curbside recycling carts. May require semi-automated in some areas.
38	Lakeside Manor #1	M1	16	No	Yes	Curbside garbage, no sign of recycling carts. Storage issues with 2nd cart.
39	Regency Club / Fairway Isles	S1	312	Yes	No	No current issues with curbside recycling cart collection
40	Sunrise Towne	S1	63	No	Yes	Containers placed behind parking spaces (street)/swale on collection day. May have storage issues with 2nd cart.
41	Sunrise Towne Preferred	S1	141	No	Yes	Containers placed behind parking spaces (street)/swale on collection day. May have storage issues with 2nd cart.
42	Sunrise Villas 1 - 1645 NW 60 Ave	M1	6	No	Yes	Curbside garbage, no sign of recycling carts. Storage issues with 2nd cart.
43	Sunrise Villas 3 - 1675 NW 60 Ave	M1	6	No	Yes	Curbside garbage, no sign of recycling carts. Storage issues with 2nd cart.
44	Sunrise Villas 4 - 1615 NW 60 Ave	M1	6	No	Yes	Curbside garbage, no sign of recycling carts. Storage issues with 2nd cart.
45	Sunrise Villas 5 - 1595 NW 60 Ave	M1	6	No	Yes	Curbside garbage, no sign of recycling carts. Storage issues with 2nd cart.
46	Sunrise Villas 15 - 1565 NW 60 Ave	M1	6	No	Yes	Curbside garbage, no sign of recycling carts. Storage issues with 2nd cart.
47	Sunrise Villas 7 - 1751 NW 60 Ave	M1	6	No	Yes	Curbside garbage, no sign of recycling carts. Storage issues with 2nd cart.
48	Sunrise Villas 9 - 1791 NW 60 Ave	M1	6	No	Yes	Curbside garbage, no sign of recycling carts. Storage issues with 2nd cart.
49	Sunrise Villas 12 - 1821 NW 60 Ave	M1	6	No	Yes	Curbside garbage, no sign of recycling carts. Storage issues with 2nd cart.
50	Sunrise Villas 14 - 1851 NW 60 Ave	M1	6	No	Yes	Curbside garbage, no sign of recycling carts. Storage issues with 2nd cart.
51	Sunrise Villas 17 - 1881 NW 60 Ave	M1	6	No	Yes	Curbside garbage, no sign of recycling carts. Storage issues with 2nd cart.
52	Townhomes of Aragon	S1	18	Yes	Yes	Narrow Streets, although currently utilizing curbside recycling carts.
53	5840 NW 16 Place	M1	4	No	Yes	Curbside garbage, no sign of recycling carts. Storage issues with 2nd cart.
54	5850 NW 16 Place	M1	4	No	Yes	Curbside garbage, no sign of recycling carts. Storage issues with 2nd cart.
55	5860 NW 16 Place	M1	4	No	Yes	Curbside garbage, no sign of recycling carts. Storage issues with 2nd cart.
56	5870 NW 16 Place	M1	4	No	Yes	Curbside garbage, no sign of recycling carts. Storage issues with 2nd cart.
57	5880 NW 16 Place	M1	4	No	Yes	Curbside garbage, no sign of recycling carts. Storage issues with 2nd cart.
58	5890 NW 16 Place	M1	4	No	Yes	Curbside garbage, no sign of recycling carts. Storage issues with 2nd cart.
59	5900 NW 16 Place	M1	4	No	Yes	Curbside garbage, no sign of recycling carts. Storage issues with 2nd cart.
60	5910 NW 16 Place	M1	4	No	Yes	Curbside garbage, no sign of recycling carts. Storage issues with 2nd cart.
61	5920 NW 16 Place	M1	4	No	Yes	Curbside garbage, no sign of recycling carts. Storage issues with 2nd cart.
62	5930 NW 16 Place	M1	4	No	Yes	Curbside garbage, no sign of recycling carts. Storage issues with 2nd cart.
63	5940 NW 16 Place	M1	4	No	Yes	Curbside garbage, no sign of recycling carts. Storage issues with 2nd cart.
64	5951 NW 16 Place	M1	8	No	Yes	Curbside garbage, no sign of recycling carts. Storage issues with 2nd cart.
65	5971 NW 16 Place	M1	8	No	Yes	Curbside garbage, no sign of recycling carts. Storage issues with 2nd cart.
66	5991 NW 16 Place	M1	8	No	Yes	Curbside garbage, no sign of recycling carts. Storage issues with 2nd cart.
67	1510 NW 58 Terrace	M1	2	No	Yes	Curbside garbage, no sign of recycling carts. Storage issues with 2nd cart.
68	1570 NW 58 Terrace	M1	2	No	Yes	Curbside garbage, no sign of recycling carts. Storage issues with 2nd cart.
69	1580 NW 58 Terrace	M1	2	No	Yes	Curbside garbage, no sign of recycling carts. Storage issues with 2nd cart.
70	1590 NW 58 Terrace	M1	2	No	Yes	Curbside garbage, no sign of recycling carts. Storage issues with 2nd cart.
71	1600 NW 58 Terrace	M1	3	No	Yes	Curbside garbage, no sign of recycling carts. Storage issues with 2nd cart.
72	1608 NW 58 Terrace	M1	3	No	Yes	Curbside garbage, no sign of recycling carts. Storage issues with 2nd cart.
73	1660 NW 58 Terrace	M1	4	No	Yes	Curbside garbage, no sign of recycling carts. Storage issues with 2nd cart.
74	1670 NW 58 Terrace	M1	4	No	Yes	Curbside garbage, no sign of recycling carts. Storage issues with 2nd cart.
75	6400 - 6600 NW 20 Court	M1	27	No	Yes	Curbside garbage, range of duplexes, triplexes and quads. Storage issues with 2nd cart.
76	5820-5998 NW 59 Terr (odd & even)	M1	44	No	Yes	Curbside garbage, range of duplexes, triplexes and quads. Storage issues with 2nd cart.
77	1860-1890 NW 58 Terr (odd & even)	M1	24	No	Yes	Curbside garbage, range of duplexes, triplexes and quads. Storage issues with 2nd cart.
78	1860-1881 NW 59 Terr (odd & even)	M1	12	No	Yes	Curbside garbage with duplexes. Storage issues with 2nd cart.
79	1860-1881 NW 59 Ave (odd & even)	M1	16	No	Yes	Curbside garbage with duplexes and triplexes. Storage issues with 2nd cart.
80	1860-1881 NW 59 Way (odd & even)	M1	17	No	Yes	Curbside garbage, range of duplexes, triplexes and quads. Storage issues with 2nd cart.
81	1870-1880 NW 60 Ave	M1	6	No	Yes	Curbside garbage, range of triplexes and quads. Storage issues with 2nd cart.

1208

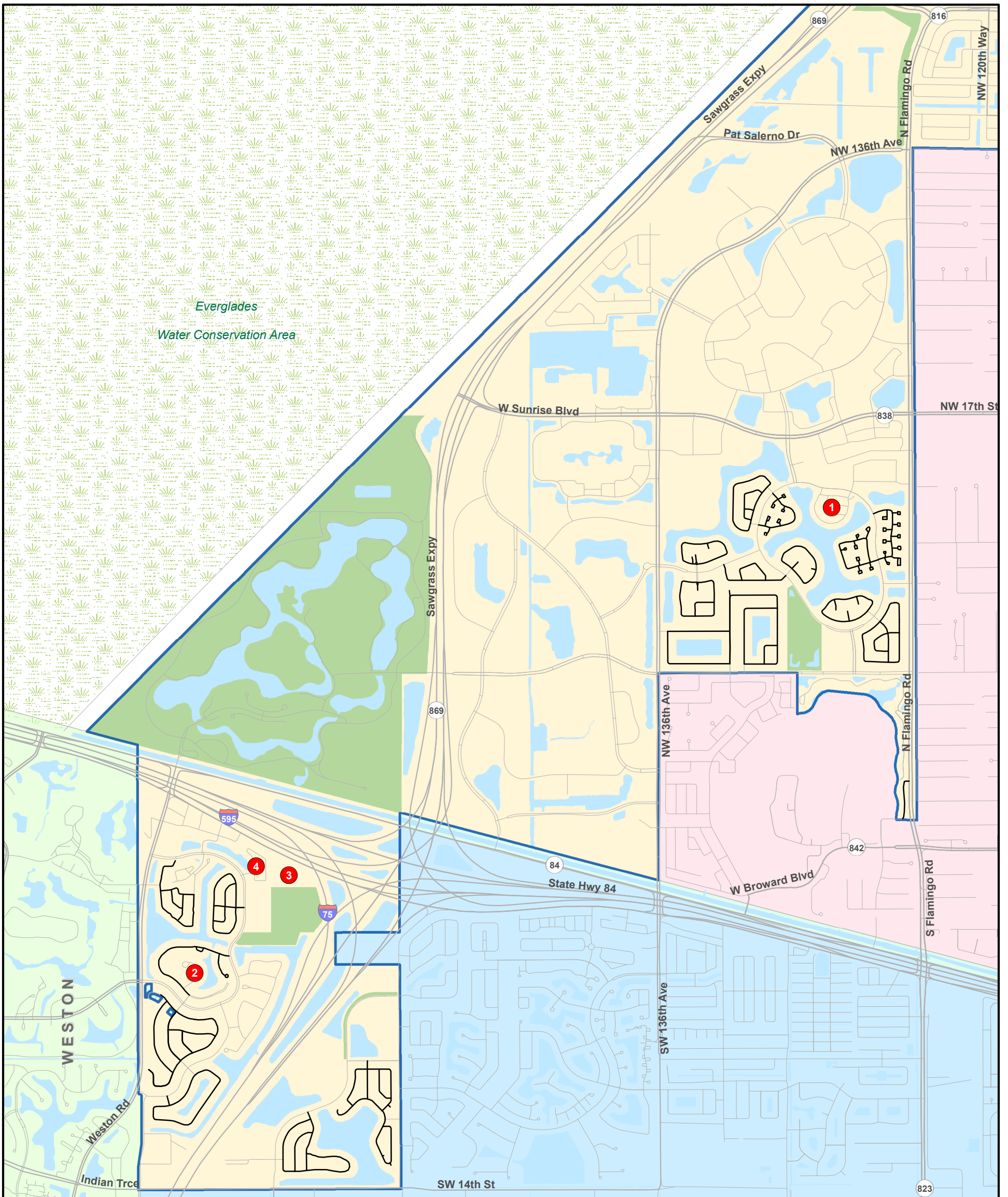
Total Number of Attached Residential Units 4,139

Total Number of Curbside Residential Units (S1, M1) 18,915

Percentage of Attached Units to Total Curbside Units 21.88%

**S1 - Individually metered homes with curbside solid waste and recycling service (Includes attached homes that are individually metered).**

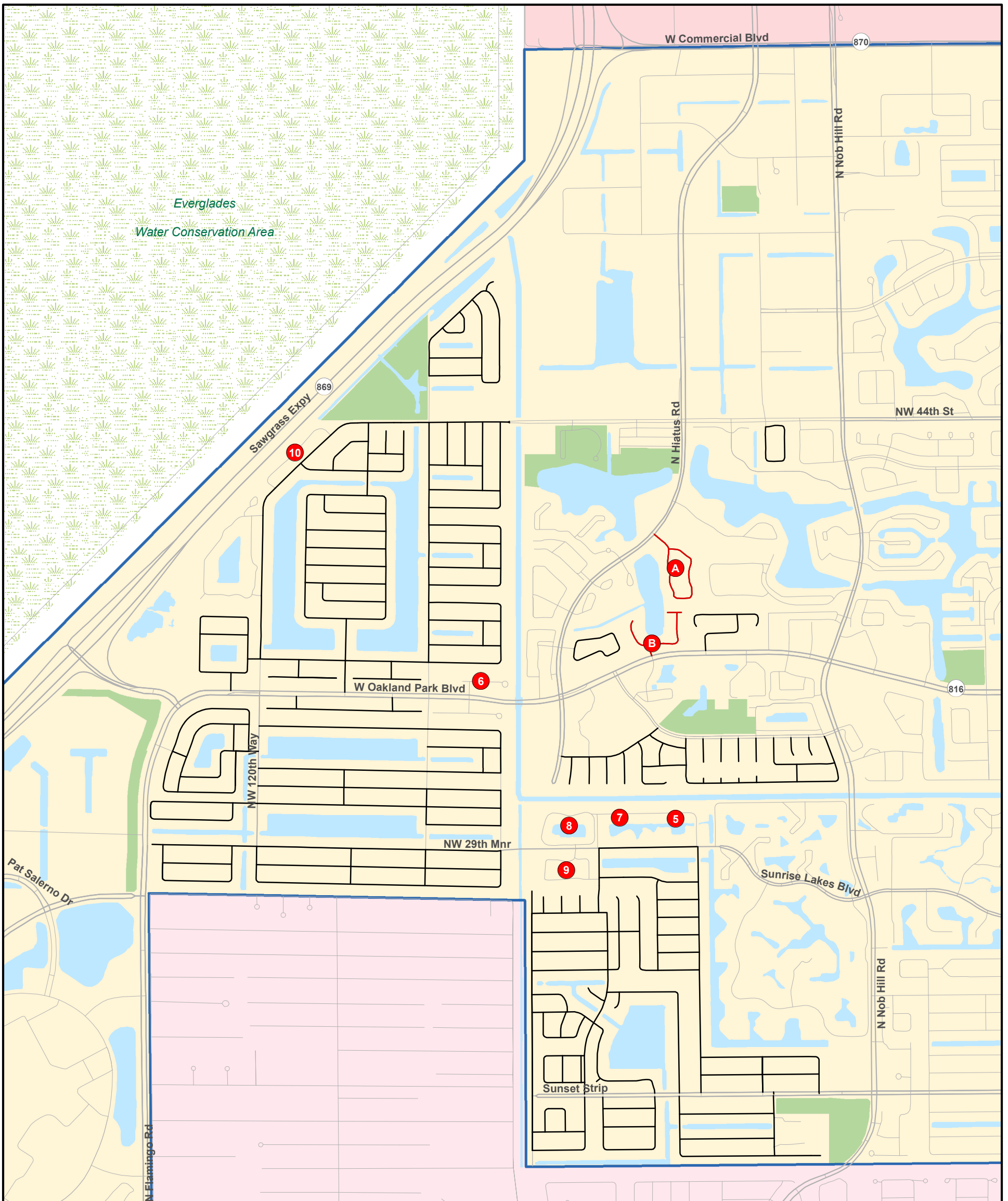
**M1 - Two or more attached homes with a master meter for water and curbside solid waste and recycling service.**



**City of Sunrise - Map 1  
Townhomes/Condominiums with Curbside Solid Waste & Recycling Service  
Properties West of Flamingo Road**

ID #	Community Name
1	Allegro
2	Lakeside Villas at Bonaventure
3	Las Brisas
4	Riverwalk

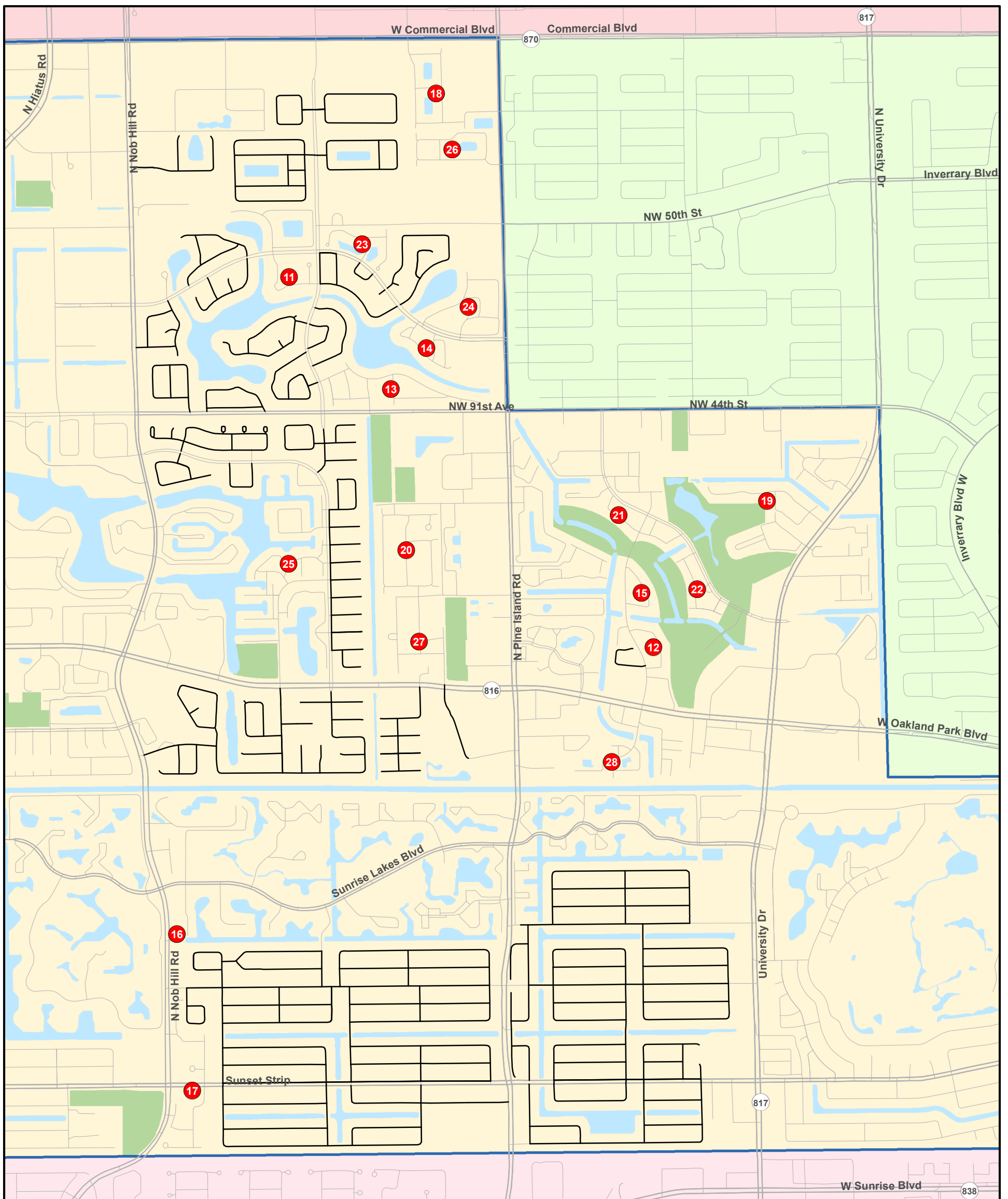




**City of Sunrise - Map 2**  
**Townhomes/Condominiums with Curbside Solid Waste & Recycling Service**  
**Properties West of Nob Hill Road and East of Flamingo Road**

ID#	CommunityName
5	Country Squires Tow nhomes
6	Entrada (North & South)
7	North Lake Tow nhomes
8	Sunrise Manor North
9	Sunrise Manor South
10	Sunrise Manor West
A	Rhapsody at Welleby
B	Lago Welleby / Sugar Bay





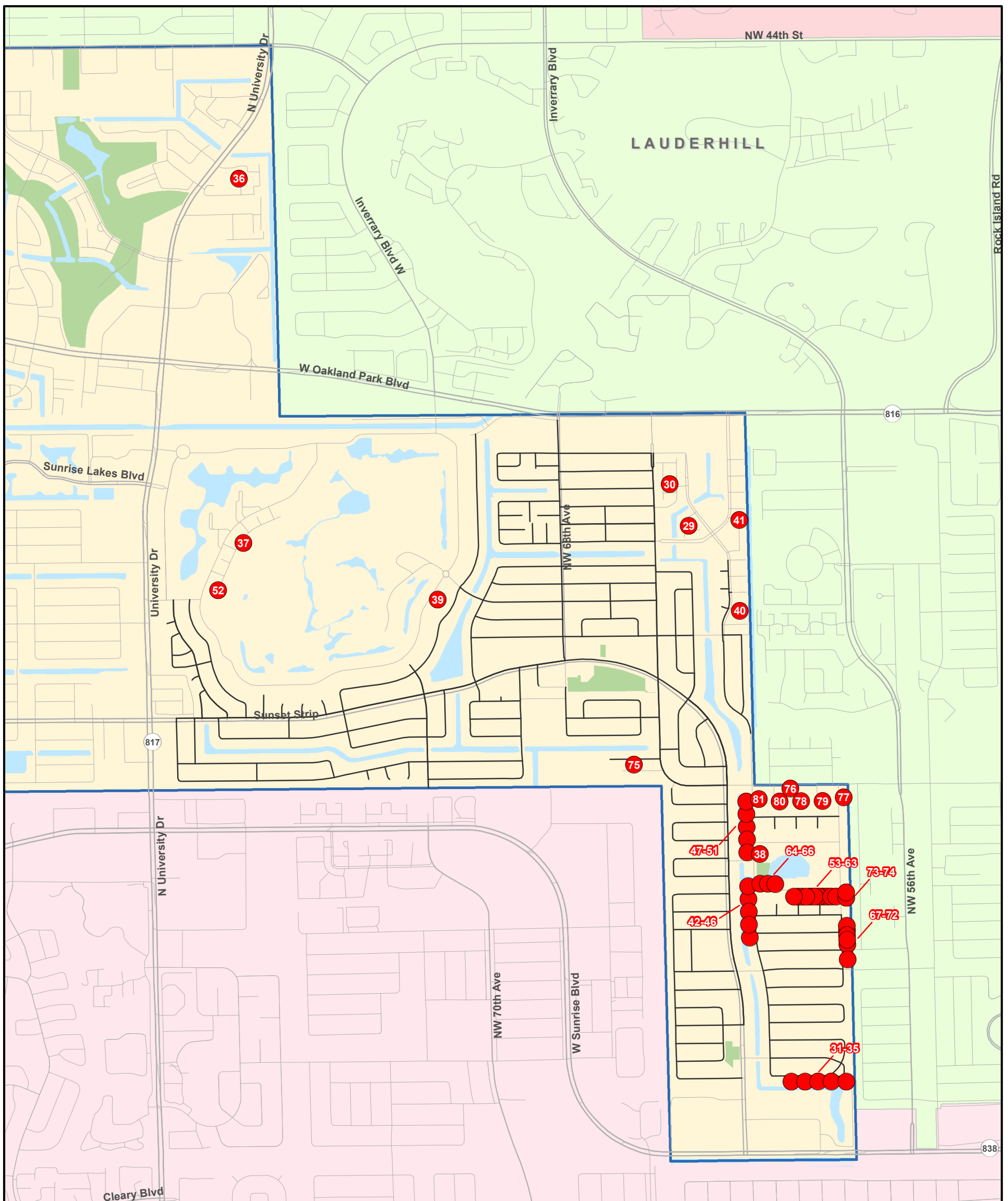
### City of Sunrise - Map 3

## Townhomes/Condominiums with Curbside Solid Waste & Recycling Service

### Properties West of University Drive and East of Nob Hill Road

ID #	Community Name	ID #	Community Name	ID #	Community Name
11	Evergreen Lakes	17	Park Terraces	23	Stockbridge Lakes of Springtree
12	Fairway Club	18	Pine Bay	24	Sunblest Townhomes
13	Kingsley Commons	19	Red Bridge	25	The Landings at Welleby Lake
14	Lakeshore Club	20	Southwind Cove	26	Tradewinds
15	Maple Leaf Patio Villas	21	Springtree Gardens	27	Villa Del Sol
16	Northwood at Sunrise Lakes	22	Springtree Villas	28	Waterside Villas





### City of Sunrise - Map 4 Townhomes/Condominiums with Curbside Solid Waste & Recycling Service Properties East of University Drive

ID #	Community Name	ID #	Community Name	ID #	Community Name	ID #	Community Name
29	Brentwood Manors I	44	Sunrise Villas 4 - 1615 NW 60 Ave	59	5900 NW 16 PL	74	1670 NW 58 TER
30	Brentwood Manors II	45	Sunrise Villas 5 - 1595 NW 60 Ave	60	5910 NW 16 PL	75	6400-6600 NW 20 CT
31	Condo #1	46	Sunrise Villas 15 - 1565 NW 60 Ave	61	5920 NW 16 PL	76	5820-5998 NW 19 ST
32	Condo #2	47	Sunrise Villas 7 - 1751 NW 60 Ave	62	5930 NW 16 PL	77	1860-1890 NW 58 TER
33	Condo #3	48	Sunrise Villas 9 - 1791 NW 60 Ave	63	5940 NW 16 PL	78	1860-1881 NW 59 TER
34	Green Gable, Inc.	49	Sunrise Villas 12 - 1821 NW 60 Ave	64	5951 NW 16 PL	79	1860-1881 NW 59 AVE
35	Parkview # 5	50	Sunrise Villas 14 - 1851 NW 60 Ave	65	5971 NW 16 PL	80	1860-1881 NW 59 WAY
36	Del Rio Village	51	Sunrise Villas 17 - 1881 NW 60 Ave	66	5991 NW 16 PL	81	1870-1880 NW 60 AVE
37	Fairways of Sunrise	52	Townhomes at Aragon	67	1510 NW 58 TER		
38	Lakeside Manor #1	53	5840 NW 16 PL	68	1570 NW 58 TER		
39	Regency Club / Fairway Isles	54	5850 NW 16 PL	69	1580 NW 58 TER		
40	Sunrise Towne	55	5860 NW 16 PL	70	1590 NW 58 TER		
41	Sunrise Towne Preferred	56	5870 NW 16 PL	71	1600 NW 58 TER		
42	Sunrise Villas 1 - 1645 NW 60 Ave	57	5880 NW 16 PL	72	1608 NW 58 TER		
43	Sunrise Villas 3 - 1675 NW 60 Ave	58	5890 NW 16 PL	73	1660 NW 58 TER		



SUNRISE COMMERCIAL CUSTOMER LIST - OCTOBER 2015

CLASS CUSTOMER NAME \* \* \* \* SERVICE ADDRESS \* \* \* \* STATE SVC STATUS DESCRIPTION

CM	AFSHAR, FARAH RAHBAR & JALAL	6001 W	SUNRISE	BLVD	FL	RF	A	1 - 3yd 2x (Shared Container)
CM	ZUCCARELLI	6009 W	SUNRISE	BLVD	FL	RF	A	
CM	A & E HAIR SALON	6017 W	SUNRISE	BLVD	FL	RF	A	
CM	DECO NAILS	6025 W	SUNRISE	BLVD	FL	RF	A	
CM	BAYLEY, RON	6731	SUNSET STRIP		FL	RF	A	1-4yd 2x (Shared Container)
CM	HEALTH RESOURCES CONSULTANTS	6735	SUNSET STRIP		FL	RF	A	
CM	ARDENT FINANCIAL SOLUTIONS	6739	SUNSET STRIP		FL	RF	A	
CM	RESTORATION COMMUNITY CENTER	6743	SUNSET STRIP		FL	RF	A	
CM	KWIK INC & SAED SHEHADEH	6747	SUNSET STRIP		FL	RF	A	
CM	HABIBI DCPA, KAM	6765	SUNSET STRIP		FL	RF	A	
CM	RATHNAM MD, AMBERPET	6765	SUNSET STRIP		FL	RF	A	
CM	SUNRISE DENTAL SERVICES PLLC	6765	SUNSET STRIP		FL	RF	A	
CM	SUNRISE DENTAL SERVICES PLLC	6775	SUNSET STRIP		FL	RF	A	
CM	GUNPAT, SURESH C & DHANMATIE	6660	SUNSET STRIP		FL	RF	A	1-2yd 3x (Shared Container)
CM	PIERRE-LOUIS, CARL	6662	SUNSET STRIP		FL	RF	A	
CM	CAMPBELL-LEE, M CORKER/AVELDA	6664	SUNSET STRIP		FL	RF	A	
CM	MIRROR DECOR	6666	SUNSET STRIP		FL	RF	A	
CM	6772-6776 SUNSET STRIP LLC	6776	SUNSET STRIP		FL	RF	A	
CM	ACTIVE VACUUMS & SEWING	6778	SUNSET STRIP		FL	RF	A	
CM	TAX PREP 4 LESS INC	6813	SUNSET STRIP		FL	RF	A	2-3yd 1x (Shared Containers)
CM	OLIVA, REGINA	6819	SUNSET STRIP		FL	RF	A	
CM	MAURA, CASSIE RAHMING & TERRI	6823	SUNSET STRIP		FL	RF	A	
CM	INDEPENDENT INSURANCE INC	6827	SUNSET STRIP		FL	RF	A	
CM	PRETTY POOCH	6831	SUNSET STRIP		FL	RF	A	
CM	ARMAGEDDON BLACK LION ALL	6835	SUNSET STRIP		FL	RF	A	
CM	LAVEAUX & IVAN BARBER SHOP INC	6841	SUNSET STRIP		FL	RF	A	
CM	CHIC FATALE FASHION LLC	6843	SUNSET STRIP		FL	RF	A	
CM	BLAIR, ANGELLA & CALVERT	6847	SUNSET STRIP		FL	RF	A	
CM	CHERRELUS, J STYLET & M	6855	SUNSET STRIP		FL	RF	A	
CM	DELVA, ANSY	6917	SUNSET STRIP		FL	RF	A	
CM	JOSEPH, PIERRE ALCINDOR	6945	SUNSET STRIP		FL	RF	A	
CM	VUONG, TRAM NGUYEN & JOHN	6953	SUNSET STRIP		FL	RF	A	

SUNRISE COMMERCIAL CUSTOMER LIST - OCTOBER 2015

CM	BREDY, ELITA	6957	SUNSET STRIP		FL	RF	A	
CM	SULEIMAN INVESTMENTS INC	6969	SUNSET STRIP		FL	RF	A	
CM	SALUD Y NUTRICION	8237	SUNSET STRIP		FL	RF	A	1-3yd 7x & 1-8yd 7x
CM	GATOR UNIVERSITY SUNRISE LLC	2320 N	UNIVERSITY	DR	FL	RF	A	(Shared Containers)
CM	O'MAC COIN LAUNDRIES INC	8225	SUNSET STRIP		FL	RF	A	
CM	US-RX DISTRIBUTION LLC	8237	SUNSET STRIP		FL	RF	A	
CM	FAMILY DOLLAR STORES #5608	8243	SUNSET STRIP		OH	RF	A	
CM	8251 SUNSET CORP	8251	SUNSET STRIP		FL	RF	A	
CM	MAWWAL HOOKAH INC	8253	SUNSET STRIP		FL	RF	A	
CM	TOTALLY FOR YOU INC	8255	SUNSET STRIP		FL	RF	A	
CM	SUNSET VISION CENTER	8259	SUNSET STRIP		FL	RF	A	
CM	PADILLA, REINA & ANGEL	8263	SUNSET STRIP		FL	RF	A	
CM	SIMPLY NATURAL PRODUCTS INC	8267	SUNSET STRIP		FL	RF	A	
CM	SIMPLY NATURAL III	8271	SUNSET STRIP		FL	RF	A	
CM	DISCOUNT AUTO PARTS # 109543	2320 N	UNIVERSITY	DR	WA	RF	A	
CM	CHINA WORLD RESTAURANT INC	2350 N	UNIVERSITY	DR	FL	RF	A	
CM	UNIVERSITY LIQUORS LLC	2400 N	UNIVERSITY	DR	FL	RF	A	
CM	ANIMAL CLINIC OF UNIVERSITY	2410 N	UNIVERSITY	DR	FL	RF	A	
CM	ENTENMANN'S SALES CO INC	2414 N	UNIVERSITY	DR	NY	RF	A	
CM	JEAN-MARY, WALSON & MANICIA	2422 N	UNIVERSITY	DR	FL	RF	A	
CM	VIP BARBERSHOP 4 INC	2424 N	UNIVERSITY	DR	FL	RF	A	
CM	H & T PHO INC	2430 N	UNIVERSITY	DR	FL	RF	A	
CM	SUNSHINE RESTAURANT MERGER SUB	2454 N	UNIVERSITY	DR	FL	RF	A	
CM	NOB HILL PLACE LLC	10013	SUNSET STRIP		FL	RF	A	1-4yd 4x; 2-6yd 7x
CM	CUTMASTERS	10049	SUNSET STRIP		FL	RF	A	(Shared Containers)
CM	DANCE FX	10057	SUNSET STRIP		FL	RF	A	
CM	OPTICAL CITY LLC	10057	SUNSET STRIP		FL	RF	A	
CM	NOB HILL PLACE LLC	10123	SUNSET STRIP		FL	RF	A	
CM	J WALSH CORP	10025	SUNSET STRIP	ST	FL	RF	A	
CM	SUNSET STRIP DONUTS LLC	10019	SUNSET STRIP		MA	RF	A	
CM	HURRICANE WINGS OF SUNRISE LLC	10031	SUNSET STRIP		FL	RF	A	
CM	MARIENZA INC	10041	SUNSET STRIP		FL	RF	A	
CM	CP VETERINARY SERVICES	10043	SUNSET STRIP		FL	RF	A	
CM	TIN FISH ENTERPRISES LLC	10053	SUNSET STRIP		FL	RF	A	
CM	HEAVEN & EARTH SALON	10055	SUNSET STRIP		FL	RF	A	

SUNRISE COMMERCIAL CUSTOMER LIST - OCTOBER 2015

CM	BULSARA, JAYANTI & JULIAN	10061	SUNSET STRIP	FL	RF	A	
CM	DENTAL TEAM OF SUNRISE	10071	SUNSET STRIP	FL	RF	A	
CM	JAIN, INDU	10089	SUNSET STRIP	FL	RF	A	
CM	MULAN SPA	10091	SUNSET STRIP	FL	RF	A	
CM	WISE LITTLE SHOPPERS	10113	SUNSET STRIP	FL	RF	A	
CM	SPECTOR, ERIC A	10117	SUNSET STRIP	FL	RF	A	
CM	SPORT TAE KWON DO MTK LLC	10109	SUNSET STRIP	FL	RF	I	
CM	LEE, HYEUK HEE	6081 W	SUNRISE	BLVD	FL	RF	A 1-2yd 1x (Shared Container)
CM	UNIVERSAL WIRELESS INC	3808 N	UNIVERSITY	DR	FL	RF	A 1-3yd 3x (Shared Container)
CM	EAT CLEAN LLC	3834 N	UNIVERSITY	DR	FL	RF	A
CM	ROSENTHAL DDS, ALLEN H	3836 N	UNIVERSITY	DR	FL	RF	A
CM	ASIAN SPA OF SUNRISE INC	3838 N	UNIVERSITY	DR	FL	RF	A
CM	SALON BRAVONEE INC	3840 N	UNIVERSITY	DR	FL	RF	A
CM	VICTORY PLACE INTL WORSHIP CTR	3842 N	UNIVERSITY	DR	FL	RF	A
CM	MARJ & R TAX SERVICES	3848 N	UNIVERSITY	DR	FL	RF	A
CM	BELLA TERRA COSMETICS LLC	3850 N	UNIVERSITY	DR	FL	RF	A
CM	SMOKE BOX INC	3852 N	UNIVERSITY	DR	FL	RF	A
CM	AMBROSIA INC & PETER STEPHENS	3854 N	UNIVERSITY	DR	FL	RF	A
CM	SUNSHINE FOOD HALLANDALE LLC	4375 N	UNIVERSITY	DR	FL	RF	A 1-8yd 3x (Shared Container)
CM	INFINITY UNIVERSITY DR LLC	4399 N	UNIVERSITY	DR	FL	RF	A
CM	DIAMOND NAILS LLC	8059 W	OAKLAND PARK	BLVD	FL	RF	A 1-2yd 1x (Shared Container)
CM	DE JESUS, ISABEL	8029 W	OAKLAND PARK	BLVD	FL	RF	A
CM	MATHAVAN, SUNITA	8057 W	OAKLAND PARK	BLVD	FL	RF	A
CM	SAWGRASS SUBWAY	3419 N	HIATUS	RD	FL	RF	A 1-4yd 4x (Shared Container)
CM	DOMINO'S PIZZA #3842	3415 N	HIATUS	RD	WA	RF	A
CM	CAPTIVA ENTERPRISES INC	3425 N	HIATUS	RD	FL	RF	A
CM	TMA PLAY SUNRISE INC	3445 N	HIATUS	RD	NY	RF	A
CM	INN-FIELD PUB	11439 W	OAKLAND PARK	BLVD	FL	RF	A 1-3yd 2x (Shared Container)
CM	XU XIANG GARDEN INC	11443 W	OAKLAND PARK	BLVD	FL	RF	A 1-2yd 2x (Shared Container)
CM	LASANI ENTERPRISE INC	11451 W	OAKLAND PARK	BLVD	FL	RF	A
CM	CAMPBELL LEE, AVELDA ANN	1064	SUNSET STRIP	FL	RF	A	1-4yd 2x (Shared Container)
CM	PHILIPPE, BILLY	1068	SUNSET STRIP	FL	RF	A	
CM	A ABILITY ADVOCATE	1072	SUNSET STRIP	FL	RF	A	
CM	ROCHA, JERRY DUBRAVETZ & RICK	1084	SUNSET STRIP	FL	RF	A	
CM	DOUGLAS, RHOAN MICHAEL/CARLENE	1092	SUNSET STRIP	FL	RF	A	



SUNRISE COMMERCIAL CUSTOMER LIST - OCTOBER 2015

CM	ST FELIX, EDNY	1100	SUNSET STRIP		FL	RF	A	
CM	CAMP WANNADO INC	1100	SUNSET STRIP		FL	RF	A	
CM	GARSON, JEAN	1104	SUNSET STRIP		FL	RF	A	
CM	DESPINOSSE, ELISABETH	1120	SUNSET STRIP		FL	RF	A	
CM	NEW YORK STYLE CUTZ INCORP	11455 W	OAKLAND PARK	BLVD	FL	RF	A	1-2yd 1x (Shared Container)
CM	MAYER, BRIAN E & ERIN	11461 W	OAKLAND PARK	BLVD	FL	RF	A	
CM	TRUONG, TO HOA TRAN & DUC MINH	11491 W	OAKLAND PARK	BLVD	FL	RF	A	
CM	GILLES, FRANCLAUDE	8306 W	OAKLAND PARK	BLVD	FL	RF	A	1-1yd 2x (Shared Container)
CM	THE RCCG STRONGTOWER PARISH	8312 W	OAKLAND PARK	BLVD	FL	RF	A	
CM	FEELING GLITZY INC	8316 W	OAKLAND PARK	BLVD	FL	RF	A	
CM	IGLESIA CRISTIANA JOSUE	8326 W	OAKLAND PARK	BLVD	FL	RF	A	
CM	OUR FATHER KINGDOM MINISTRIES	8352 W	OAKLAND PARK	BLVD	FL	RF	A	1-4yd 1x (Shared Container)
CM	FAGAN, JAMES	8354 W	OAKLAND PARK	BLVD	FL	RF	A	
CM	A & S STORES INC	6254 W	OAKLAND PARK	BLVD	FL	RF	A	1-8yd 4x (Shared Container)
CM	GOD'S ABIDING PLACE WORLD WIDE	6010 W	OAKLAND PARK	BLVD	FL	RF	A	
CM	JUST TEN NAIL SALON	6020 W	OAKLAND PARK	BLVD	FL	RF	A	
CM	ATIS, ROBERT	6032 W	OAKLAND PARK	BLVD	FL	RF	A	
CM	CRYSTAL DREAMS BANQUET HALL	6062 W	OAKLAND PARK	BLVD	FL	RF	A	
CM	KARLIA'S FLORIST & BRIDAL CTR	6082 W	OAKLAND PARK	BLVD	FL	RF	A	
CM	STEWART, CAROL	6120 W	OAKLAND PARK	BLVD	FL	RF	A	
CM	ALEXIS, ABNER & VOLUMNIE	6130 W	OAKLAND PARK	BLVD	FL	RF	A	
CM	SAINTIL, ELIFAN	6140 W	OAKLAND PARK	BLVD	FL	RF	A	
CM	FRATERNITY FAMILY WORSHIP CTR	6150 W	OAKLAND PARK	BLVD	FL	RF	A	
CM	BEAUTY EXCHANGE #6	6164 W	OAKLAND PARK	BLVD	FL	RF	A	
CM	FAITH RESTORATION TEMPLE INC	6210 W	OAKLAND PARK	BLVD	FL	RF	A	
CM	INCOME TAX CENTER	6230 W	OAKLAND PARK	BLVD	FL	RF	A	
CM	REESE VISION CARE PA	6244 W	OAKLAND PARK	BLVD	FL	RF	A	
CM	INVERRAMA SHOPPING PLAZA LLC	6250 W	OAKLAND PARK	BLVD	FL	RF	A	
CM	BROWARD FAMILY DENTAL	6260 W	OAKLAND PARK	BLVD	FL	RF	A	
CM	SPICE ISLE	6344 W	OAKLAND PARK	BLVD	FL	RF	A	
CM	NORTRADAME DELAVICTROIX	6350 W	OAKLAND PARK	BLVD	FL	RF	A	
CM	EXPRESS POSTAL	6354 W	OAKLAND PARK	BLVD	FL	RF	A	
CM	NATURAL & HOLISTIC ALTERNATIVE	6360 W	OAKLAND PARK	BLVD	FL	RF	A	
CM	FLORIDA MASTER BARBER	6364 W	OAKLAND PARK	BLVD	FL	RF	A	
CM	CADET, INRIKA	6374 W	OAKLAND PARK	BLVD	FL	RF	A	

SUNRISE COMMERCIAL CUSTOMER LIST - OCTOBER 2015

CM	DIRECT MESSENGER	1341	SUNSET STRIP	FL	RF	A	1-3yd 1x (Shared Container)
CM	SILGUN HOLDINGS LLC	1361	SUNSET STRIP	FL	RF	A	
CM	PREMIUM TAX & FINANCIAL GROUP	1371	SUNSET STRIP	FL	RF	A	
CM	A CUT ABOVE UNISEX INC	1381	SUNSET STRIP	FL	RF	A	
CM	RH FAMILY ENTERPRISES LLC	1391	SUNSET STRIP	FL	RF	A	
CM	HOLLYWOOD HEALTH PRODUCTS INC	1395	SUNSET STRIP	FL	RF	A	
CM	ATARA FAMILY INC	3081 NW 64		AVE	FL	RF	1-4yd 1x (Shared Container)
CM	DELVA, ANSY	3085 NW 64		AVE	FL	RF	A
CM	GOLDEN WIRELESS 4 INC	3087 NW 64		AVE	FL	RF	A
CM	DAVIS, DENICIA	3091 NW 64		AVE	FL	RF	A
CM	NEW LIFE SEVENTH DAY ADV CHR	3078 NW 60		AVE	FL	RF	1-2yd 1x (Shared Container)
CM	RESTORATION CENTER OF THE UNT	3080 NW 60		AVE	FL	RF	A
CM	HAITIAN CHURCH BROTHERS UNITY	3088 NW 60		AVE	FL	RF	A
CM	THE RESTORATN CTR UNT BRETHREN	3090 NW 60		AVE	FL	RF	A
CM	TRIKON SUNRISE ASSOCIATES LLC	13835 W	SUNRISE	BLVD	FL	RF	1-3yd 2x (Shared Container)
CM	T-MOBILE SOUTH LLC	13855 W	SUNRISE	BLVD	ND	RF	A
CM	SAL'S TRATTORIA & PIZZERIA	13875 W	SUNRISE	BLVD	FL	RF	A
CM	AA FLORIDA BRIDAL COMPANY LLC	13895 W	SUNRISE	BLVD	FL	RF	A
CM	SAWGRASS LANDING SUBWAY INC	13955 W	SUNRISE	BLVD	FL	RF	1-1yd 2x (Shared Container)
CM	SUPERCUTS INC	13975 W	SUNRISE	BLVD	WA	RF	A
CM	PRO-TECH BICYCLE SHOP	15972 W	STATE ROAD 84	FL	RF	A	1-2yd 2x (Shared Container)
CM	MARIU'S UNISEX INC	15980 W	STATE ROAD 84	FL	RF	A	
CM	GO GREEN DRY CLEAN INC	15984 W	STATE ROAD 84	FL	RF	A	
CM	SUBWAY	15956 W	STATE ROAD 84	FL	RF	A	1-6yd 2x (Shared Container)
CM	PERMAR GROUP CORP	15960 W	STATE ROAD 84	FL	RF	A	
CM	FRATELLI ASSOCIATES LLC	15970 W	STATE ROAD 84	FL	RF	A	
CM	WESTGATE SQUARE SHOPPING CTR	15810 W	STATE ROAD 84	FL	RF	A	
CM	ANGELES GITANOS CORP	15880 W	STATE ROAD 84	FL	RF	A	1-6yd 2x (Shared Container)
CM	WORLD OF HOBBIES LLC	15904 W	STATE ROAD 84	FL	RF	A	
CM	FABIO & YOVANNY SALON INC	15912 W	STATE ROAD 84	FL	RF	A	
CM	ROUSE FAMILY EYE CARE	15914 W	STATE ROAD 84	FL	RF	A	
CM	X-NORTH CORP	15920 W	STATE ROAD 84	FL	RF	A	
CM	COUNTRY WINE & SPIRITS CORP	15928 W	STATE ROAD 84	FL	RF	A	
CM	MARYELIS LOVELY PETS	15932 W	STATE ROAD 84	FL	RF	A	
CM	H-K NAILS	15944 W	STATE ROAD 84	FL	RF	A	

SUNRISE COMMERCIAL CUSTOMER LIST - OCTOBER 2015

CM	JACKIE ROSENTHAL CORP	15946 W	STATE ROAD 84		FL	RF	A	
CM	TOTAL NUTRITION	15948 W	STATE ROAD 84		FL	RF	A	
CM	WESTGATE CHIROPRACTIC PA	15830 W	STATE ROAD 84		FL	RF	A	1-1yd 1x (Shared Container)
CM	ALLSTATE INSURANCE	15838 W	STATE ROAD 84		FL	RF	A	
CM	THE POINTE @ SAWGRASS OWN ASSO	1669 NW	144	TER	FL	RF	A	1-4yd 3x (Shared Container)
CM	THE POINTE @ SAWGRASS OWN ASSO	1671 NW	144	TER	FL	RF	A	
CM	HANSEN, STEVEROY	1075	SUNSET STRIP		FL	RF	A	1-3yd 3x (Shared Container)
CM	PAUL, J DESIR & JACQUELINE	1076	SUNSET STRIP		FL	RF	A	
CM	WASSAN INC	1079	SUNSET STRIP		FL	RF	A	
CM	OJOGIRI, MOSES	1083	SUNSET STRIP		FL	RF	A	
CM	JACOBS, DR JON S	1085	SUNSET STRIP		FL	RF	A	
CM	CARTER, IAN S	1089	SUNSET STRIP		FL	RF	A	
CM	JONAS, MELANIE	1091	SUNSET STRIP		FL	RF	A	
CM	PROFESSIONAL WINDOW & SCREEN	6120 NW	11	ST	FL	RF	A	
CM	VERGARA, FERNANDO VELEZ	6126 NW	11	ST	FL	RF	A	
CM	ARANSEVIA, MARJORIE	6128 NW	11	ST	FL	RF	A	
CM	CARTER, IAN	6134 NW	11	ST	FL	RF	A	
CM	NEW HARVEST CATHEDRAL INC	6140 NW	11	ST	FL	RF	A	
CM	S FLA FULL GOSPEL ASSEMBLY LLC	6144 NW	11	ST	FL	RF	A	
CM	BNB MANAGEMENT INC	6148 NW	11	ST	FL	RF	A	
CM	THOMPSON, BABARHA	6150 NW	11	ST	FL	RF	A	
CM	KANTER MANAGEMENT INC	6152 NW	11	ST	FL	RF	A	
CM	INDIA PENTECOSTAL CHURCH OF	6180 NW	11	ST	FL	RF	A	
CM	SUNSET DENTAL CARE	6491	SUNSET STRIP		FL	RF	A	1 - 8yd 2x (Shared Container)
CM	NAJMAN *, TAMIR ALIMA & ILAN	6491	SUNSET STRIP		FL	RF	A	
CM	BROWN, RALPH ST LUCE & SHARON	6491	SUNSET STRIP		FL	RF	A	
CM	VHW INVESTMENT INC	6491	SUNSET STRIP		FL	RF	A	
CM	PIERTIL, F RAYMOND & LOVERY	6491	SUNSET STRIP		FL	RF	A	
CM	HOUSING OPPORTUNITIES PROJECT	6491	SUNSET STRIP		FL	RF	A	
CM	BLANC, KARLOS	6491	SUNSET STRIP		FL	RF	A	
CM	JOHNSON, CHRISTOPHER	6497	SUNSET STRIP		FL	RF	A	
CM	MARSHALL, CHERRY ANN	6497	SUNSET STRIP		FL	RF	A	
CM	ST HILAIRE, ARNOLD	6497	SUNSET STRIP		FL	RF	A	
CM	BISHOP, CHESTER A	6531	SUNSET STRIP		FL	RF	A	
CM	ORALTECH DENTAL LABORATORIES	6531	SUNSET STRIP		FL	RF	A	

SUNRISE COMMERCIAL CUSTOMER LIST - OCTOBER 2015

CM	MORALES, REINA AMAYA & ALFREDO	6531	SUNSET STRIP		FL	RF	A	
CM	ANTHONY JR, ALBERT A	6531	SUNSET STRIP		FL	RF	A	
CM	ZAMOR, TERTULIA	6531	SUNSET STRIP		FL	RF	A	
CM	BAZILE, GIMPCY MOISE & OBED	6531	SUNSET STRIP		FL	RF	A	
CM	PRIMANTI BROTHERS OF SUNRISE	2019 N	UNIVERSITY	DR	FL	RF	A	1-6yd 6x (Shared Container)
CM	GOODWILL INDUSTRIES OF SO FL	2029 N	UNIVERSITY	DR	FL	RF	A	
CM	ADVANCED THERAPY CONCEPTS	2035 N	UNIVERSITY	DR	FL	RF	A	
CM	JIN SUSHI	8250	SUNSET STRIP		FL	RF	A	1-6yd 5x (Shared Container)
CM	SUNNY FOOD & BEVERAGE INC	8260	SUNSET STRIP		FL	RF	A	
CM	PLANTATION POOL & PATIO	8270	SUNSET STRIP		FL	RF	A	
CM	AFFORDABLE DENTAL CENTER	8278	SUNSET STRIP		FL	RF	A	
CM	PIZZA HUT	8280	SUNSET STRIP		KS	RF	A	
CM	JAIMATA INC	8288	SUNSET STRIP		FL	RF	A	
CM	YF SE FLA INC	2101 N	UNIVERSITY	DR	FL	RF	A	
CM	ROYAL TOUCH BARBER SHOP	2141 N	UNIVERSITY	DR	FL	RF	A	
CM	METRO TREATMENT OF FLORIDA	2175 N	UNIVERSITY	DR	FL	RF	A	
CM	DR STERN VISUAL HEALTH CTR	2037 N	UNIVERSITY	DR	FL	RF	A	1-4yd 5x (Shared Container)
CM	GOLDEN AGE ADULT DAYCARE LLC	2039 N	UNIVERSITY	DR	FL	RF	A	
CM	DR BERNARD S BURTON DC PA	2045 N	UNIVERSITY	DR	FL	RF	A	
CM	ENTERPRISE LEASING CO OF FL	2047 N	UNIVERSITY	DR	FL	RF	A	
CM	RED APPLE ONE INC	2051 N	UNIVERSITY	DR	FL	RF	A	
CM	MARENUS MD, MARTIN	2057 N	UNIVERSITY	DR	FL	RF	A	
CM	BOSS THE PET CONNECTION	2063 N	UNIVERSITY	DR	FL	RF	A	
CM	CONGAS ENTERTAINMENT CORP	2079 N	UNIVERSITY	DR	FL	RF	A	
CM	BEACH HOLDING INC	2081 N	UNIVERSITY	DR	FL	RF	A	1-4yd 5x; 1-8yd 5x
CM	CONG, QUYEN	2089 N	UNIVERSITY	DR	FL	RF	A	1-4yd 6x (Shared Containers)
CM	MR SMOKES LLC	2083 N	UNIVERSITY	DR	FL	RF	A	
CM	HUANG, JIAN HE	2091 N	UNIVERSITY	DR	FL	RF	A	
CM	LASERQUEST	2101 N	UNIVERSITY	DR	CN	RF	A	
CM	WHITE, ANDREW	2660 N	UNIVERSITY	DR	FL	RF	A	1-2yd 2x (Shared Container)
CM	FALAFEL PITA AND GRILL	2662 N	UNIVERSITY	DR	FL	RF	A	
CM	BY FAITH CHRISTIAN BOOKSTORE	2664 N	UNIVERSITY	DR	FL	RF	A	
CM	WHITE, NARDA	2666 N	UNIVERSITY	DR	FL	RF	A	
CM	MONFORTE, VINCENT	2668 N	UNIVERSITY	DR	FL	RF	A	
CM	FIRST BAPTIST CHURCH	6401	SUNSET STRIP		FL	RF	A	1-2yd 1x (Shared Container)

SUNRISE COMMERCIAL CUSTOMER LIST - OCTOBER 2015

CM	EGLISE BAPTISTE HAITENNE	6711	SUNSET STRIP		FL	RF	A		
CM	SHAPIRO SPEER PROPERTIES	1201	SUNSET STRIP		NY	RF	A	1-4yd 4x (Shared Container)	
CM	SHOP & SAVE	1201	SUNSET STRIP		FL	RF	A		
CM	FOSTER, SHARON	1217	SUNSET STRIP		FL	RF	A		
CM	JP INVESTMENT STRATEGIES	1219	SUNSET STRIP		FL	RF	A		
CM	MAMMA'S KITCHEN	1223	SUNSET STRIP		FL	RF	A		
	NAT / BEAUTY BARBER SHOP	1213	SUNSET STRIP						
CM	NEW SOCIETY ACADEMY	6665	SUNSET STRIP		FL	RF	A	1-3yd 1x (Shared Container)	
CM	BODNAR ENTERPRISES INC	8318 W	OAKLAND PARK	BLVD	FL	RF	A	1-1yd 2x (Shared Container)	
CM	AMERICAN AUTOMOTIVE & TOWING	7738 NW	44		ST	FL	RF	A	1-8yd 3x (Shared Container)
CM	FILIPI JEWELRY	7826 NW	44		ST	FL	RF	A	
CM	RUBY'S FINE JEWELRY	7830 NW	44		ST	FL	RF	A	
CM	J & G OF SOUTH FLORIDA	7830 NW	44		ST	FL	RF	A	
CM	AUTO REPAIRS SERVICE	7854 NW	44		ST	FL	RF	A	
CM	LINCOLN SUNRISE LLC	7764 NW	44		ST	FL	RF	A	
CM	JOHNSON, MEDLINE	7836 NW	44		ST	FL	RF	A	
CM	FRUIT EMPORIUM &	7792 NW	44		ST	FL	RF	A	1-6yd 3x (Shared Container)
CM	BARRY'S BACK GROC	7798 NW	44		ST	FL	RF	A	
CM	SALON 44 &	7802 NW	44		ST	FL	RF	A	
CM	AMERICAN AUTO VINYL	7838 NW	44		ST	FL	RF	A	
CM	LINCOLN SUNRISE LLC &	7796 NW	44		ST	FL	RF	A	
CM	LEE KOON HUNG CHOY LAY FUT INC	7748 NW	44		ST	FL	RF	A	1-8yd 3x (Shared Container)
CM	SOUND OF SUNRISE	7752 NW	44		ST	FL	RF	A	
CM	H H TAX SERVICE	7760 NW	44		ST	FL	RF	A	
CM	NELOS APPLAUSE BEAUTY CORP	7764 NW	44		ST	FL	RF	A	
CM	DOTY BRIDGE	7766 NW	44		ST	FL	RF	A	
CM	PETUSEVSKY	7768 NW	44		ST	FL	RF	A	
CM	AMERICAN PATHOLOGY ASSOC INC	7770 NW	44		ST	FL	RF	A	
CM	YOUR BAKERY CONNECTION INC	7772 NW	44		ST	FL	RF	A	
CM	TREASURE, DERICK	7776 NW	44		ST	FL	RF	A	
CM	LINCOLN SUNRISE LLC &	7780 NW	44		ST	FL	RF	A	
CM	RESTREPO, PIEDAD	7788 NW	44		ST	FL	RF	A	
CM	LAKESIDE MANOR EAST	5820 NW	17		PL	FL	RF	A	36 units 3rd day
CM	LASALLE PARK CONDO	1690 NW	58		TER	FL	RF	A	64 units 3rd day
CM	SUNRISE TOWNE PREF CONDO ~	2600 NW	60		TER	FL	RF	A	1-3yd 1x

SUNRISE COMMERCIAL CUSTOMER LIST - OCTOBER 2015

CM	SBBC # 3061	3700 N	HIATUS	RD	FL	RF	A	1-6yd 5x; 1-2yd 5x
CM	SBBC # 2052	5000 NW	94	AVE	FL	RF	A	1-8yd 5x; 1-2yd 5x
CM	WRI-SRP SUNRISE WEST LLC	9010 W	COMMERCIAL	BLVD	FL	RF	A	1-6yd 4x
CM	WRI-SRP SUNRISE WEST LLC	9240 W	COMMERCIAL	BLVD	FL	RF	A	2-4yd 2x
CM	DUKE REALTY LMT PTNR	9800 W	COMMERCIAL	BLVD	NY	RF	A	1-4yd 2x
CM	1500 CONCORD TERRACES LLC	1500	CONCORD	TER	FL	RF	A	1-8yd 4X
CM	WELLEBY MANAGEMENT ASSOC INC	3489 N	HIATUS	RD	FL	RF	A	1-6yd 2x 2-4YD 2X (3rd & 4th day, use comm rates)
CM	4101 N HIATUS RD LLC	4101 N	HIATUS	RD	FL	RF	A	1-3yd 2x
CM	5001 HIATUS LLC	5001 N	HIATUS	RD	MI	RF	A	1-8yd 3x
CM	SAWGRASS CENTER	5301 N	NOB HILL	RD	NY	RF	A	1-3yd 6x
CM	BELLE TERRE OF SUNRISE	7800 W	OAKLAND PARK	BLVD	FL	RF	A	1-3yd 2x ; 1-4yd 3x
CM	CPAC OAKLAND UNIVERSITY LLC	8079 W	OAKLAND PARK	BLVD	FL	RF	A	2-6yd 3x
CM	BARUCH HASHEM YOM YOM LLC	8424 W	OAKLAND PARK	BLVD	FL	RF	A	1-8yd 4x
CM	MPI/PINE OAK INC	8901 W	OAKLAND PARK	BLVD	FL	RF	A	1-6yd 2x
CM	24 HOUR FITNESS USA	9919 W	OAKLAND PARK	BLVD	WA	RF	A	1-4yd 2x; 1-6yd 3x; 1-4yd 1x
CM	WELLEBY SQUARE INC	10024 W	OAKLAND PARK	BLVD	FL	RF	A	1-4yd 3x; 1-4yd 2x
CM	SUNRISE OPERATIONS LLC	11110 W	OAKLAND PARK	BLVD	FL	RF	A	Third day pickup 40 units
CM	SUN RUN CONDO II ASSOC	3110 N	PINE ISLAND	RD	FL	RF	A	Third day pickup 40 units
CM	SUN RUN CONDO ASSOCIATION	3120 N	PINE ISLAND	RD	FL	RF	A	1-2yd 2x 1-2yd 2x; 1-8yd 1x; 1-8yd 2x; 1-6yd 2x;
CM	REIM INVESTMENT GROUP INC	3134 N	PINE ISLAND	RD	FL	RF	A	1-4yd 1x
CM	SCP-CAPRI PINE PLAZA LLC	4201 N	PINE ISLAND	RD	FL	RF	A	1-8yd 1x
CM	SAWGRASS OFFICE CENTER ASSOC	1361	SAWGRASS CORPORATE	PKWY	FL	RF	A	Third day pickup 40 units
CM	HERITAGE GREEN RESIDENCES LLC	8461	SPRINGTREE	DR	FL	RF	A	Third day pickup 32 units
CM	HERITAGE GREEN	8481	SPRINGTREE	DR	FL	RF	A	1-4yd 2x
CM	7-ELEVEN INC	15990 W	STATE ROAD 84		FL	RF	A	1-4yd 1x
CM	MARKHAM PARK/TARGET RANGE	16001 W	STATE ROAD 84		FL	RF	A	1-1yd 1x
CM	CITY LIQUORS	5995 W	SUNRISE	BLVD	FL	RF	A	1-2yd 2x
CM	RAINBOW APPAREL	5997 W	SUNRISE	BLVD	CT	RF	A	1-2yd 2x
CM	GOLDEN STAR III LLC	5999 W	SUNRISE	BLVD	FL	RF	A	1-4yd 1x
CM	FAMILY DOLLAR STORE #2840	6033 W	SUNRISE	BLVD	NJ	RF	A	1-8yd 4x
CM	FINE FOODS GOURMET MARKETS INC	6041 W	SUNRISE	BLVD	FL	RF	A	1-3yd 1x
CM	SUNSHINE GASOLINE	6099 W	SUNRISE	BLVD	FL	RF	A	1-3yd comp 1x
CM	WALGREENS #4694	6105 W	SUNRISE	BLVD	IL	RF	A	

SUNRISE COMMERCIAL CUSTOMER LIST - OCTOBER 2015

CM	WALKER INVESTORS GROUP LLC	6145 W	SUNRISE	BLVD	FL	RF	A	2-1yd 2x
CM	SAWGRASS SQUARE/SOUTHEAST CTR	12502 W	SUNRISE	BLVD	FL	RF	A	1-4yd 3x; 1-4yd 3x; 1-6yd 3x
CM	UNIVERSITY DRIVE REALTY LLC	2692 N	UNIVERSITY	DR	NJ	RF	A	1-6yd 2x
CM	SUNRISE SHOPPES LC	2700 N	UNIVERSITY	DR	FL	RF	A	1-2yd 2x; 1-2yd 2x
CM	SUNRISE SHOPPES LC	2800 N	UNIVERSITY	DR	FL	RF	A	1-2yd 2x
CM	BRE MARINER SUNRISE TWN CENTER	3312 N	UNIVERSITY	DR	FL	RF	A	1-4yd 2x
CM	WESTON 100 LLC	100	WESTON	RD	FL	RF	A	1-8yd 2x
CM	MSSI	5101 NW	108	AVE	FL	RF	A	1-2yd 1x
CM	I'M A LITTLE TEACUP INC	5271 NW	108	AVE	FL	RF	A	1-4yd 1x
CM	COLONY COURTS II	3820 NW	122	TER	FL	RF	A	Third day 144 units
CM	METROPICA RESIDENTIAL I LLC	1800 NW	136	AVE	FL	RF	A	1-3yd 3x
CM	LAKESIDE MANOR	5861 NW	16	PL	FL	RF	A	Third day 45 units
CM	LAKESIDE MANOR	5881 NW	16	PL	FL	RF	A	Third day 42 units
CM	CIRCLE K STORES INC	1140 SW	160	AVE	WA	RF	A	1-6yd 2x
CM	INDIAN TRACE PHASE 1-B	1300 SW	160	AVE	FL	RF	A	1-8yd 5x
CM	SBBC # 2611	9100 NW	21	MNR	FL	RF	A	1-6yd 5x; 1-2yd 5x
CM	SMART DEALS INC	13805 NW	4	ST	FL	RF	A	1-8yd 1x
CM	FISH PEDDLER	7794 NW	44	ST	FL	RF	A	1-3yd 6x
CM	MICCAS PROPERTIES LLC	8530 NW	44	ST	FL	RF	A	1-4yd 3x
CM	COURTYARD @ NOBHILL CONDO ASSN	10164 NW	47	ST	FL	RF	A	1-6yd 2x
CM	CAR REMODELING	10001 NW	50	ST	FL	RF	A	1-2yd 1x
CM	NOB HILL BUSINESS PLAZA	10048 NW	53	ST	FL	RF	A	1-2yd 1x
CM	LAKEVIEW PLAZA E	13630 NW	8	ST	PA	RF	A	1-8yd 2x
CM	LAKEVIEW PLAZA W	13650 NW	8	ST	PA	RF	A	1-6yd 3x
CM	SANDOR F GENET LLC	14001 NW	8	ST	FL	RF	A	2-8yd 3x
CM	F P & L	11205 NW	44	ST	OH	RF	A	2-8yd 2x
CM	SBBC # 3401	12655 NW	8	ST	FL	RF	A	1-6yd 5x; 1-2yd 5x
CM	TR LAKE SHORE PLAZA II LTD	1300	CONCORD	TER	FL	RF	A	1-8yd 2x
CM	PEDIATRIX MEDICAL GROUP INC	1301	CONCORD	TER	FL	RF	A	1-8yd 2x
CM	AETNA LIFE INSURANCE CO	1340	CONCORD	TER	CT	RF	A	1-8yd 6x
CM	CAR CHE FL HAR LLC	201	INTERNATIONAL	PKWY	FL	RF	A	1-8yd 2x
CM	FANATICS INC	251	INTERNATIONAL	PKWY	FL	RF	A	1-2yd 1x
CM	AERO HARDWARE	300	INTERNATIONAL	PKWY	FL	RF	A	1-8yd 3x
CM	SOUTHERN INVEST LLC	320	INTERNATIONAL	PKWY	FL	RF	A	1-4yd 1x
CM	POSITIVE GROUND INC	350	INTERNATIONAL	PKWY	FL	RF	A	1-4yd 1x

SUNRISE COMMERCIAL CUSTOMER LIST - OCTOBER 2015

CM	LIT INDUSTRIAL LMT PTNRS	710	INTERNATIONAL	PKWY	FL	RF	A	1-4yd 3x
CM	SAWGRASS & SPECTRUM SDCO INC	789	INTERNATIONAL	PKWY	CA	RF	A	1-8yd 3x
CM	BOLTON MEDICAL INC	799	INTERNATIONAL	PKWY	FL	RF	A	1-4yd 3x
CM	SPOHN GLOBAL ENTERPRISES LLC	800	INTERNATIONAL	PKWY	FL	RF	A	1-1yd 1x
CM	LIBERTY PROPERTY TRUST	1301	INTERNATIONAL	PKWY	FL	RF	A	1-6yd 5x
CM	LBUBS 2007-CI SUNRISE 400 LLC	400	SAWGRASS CORPORATE	PKWY	FL	RF	A	1-2yd 2x
CM	SAWGRASS FLEXXSPACE CONDOS LTD	440	SAWGRASS CORPORATE	PKWY	FL	RF	A	1-2yd 2x
CM	SAWGRASS FLEXXSPACE CONDOS LTD	480	SAWGRASS CORPORATE	PKWY	FL	RF	A	1-2yd 2x
CM	TEMPLE BETH ISRAEL INC	481	SAWGRASS CORPORATE	PKWY	FL	RF	A	1-1yd 1x
CM	SAWGRASS FLEXXSPACE CONDOS LTD	490	SAWGRASS CORPORATE	PKWY	FL	RF	A	1-2yd 2x
CM	SAWGRASS PARKWAY LLC	500	SAWGRASS CORPORATE	PKWY	MD	RF	A	1-2yd 1x
CM	DOR INVESTMENTS LLC	530	SAWGRASS CORPORATE	PKWY	FL	RF	A	1-1yd 2x
CM	HILLSBORO INLET PLAZA	555	SAWGRASS CORPORATE	PKWY	FL	RF	A	2-6yd 2x
CM	GLOBAL INDUSTRIES SOUTH	560	SAWGRASS CORPORATE	PKWY	FL	RF	A	1-3yd 1x
CM	KIDE ENTERPRISES LLC	590	SAWGRASS CORPORATE	PKWY	FL	RF	A	1-2yd 1x
CM	HBO LATIN AMERICA PRODUCT SVCS	601	SAWGRASS CORPORATE	PKWY	FL	RF	A	1-1yd 1x
CM	OT INVESTMENTS LLC	700	SAWGRASS CORPORATE	PKWY	FL	RF	A	1-6yd 1x
CM	SVT SAWGRASS POINT I LP	1000	SAWGRASS CORPORATE	PKWY	FL	RF	A	1-8yd 5x
CM	TROPIC SUPPLY INC	1001	SAWGRASS CORPORATE	PKWY	FL	RF	A	1-4yd 2x
CM	INDUSTRIAL PROPERTIES	1101	SAWGRASS CORPORATE	PKWY	FL	RF	A	1-8yd 2x
CM	SVT SAWGRASS POINT II LP	1200	SAWGRASS CORPORATE	PKWY	FL	RF	A	1-6yd 2x
CM	FIRST CLASS MOVING	1251	SAWGRASS CORPORATE	PKWY	FL	RF	A	1-2yd 1x
CM	DELTA INDUSTRIAL SYSTEMS	1275	SAWGRASS CORPORATE	PKWY	FL	RF	A	1-1yd 1x
CM	SPF SUNRISE CORPORATE PLAZA I	1300	SAWGRASS CORPORATE	PKWY	FL	RF	A	1-8yd 2x
CM	PALM TOWERS SOUTH INC	1351	SAWGRASS CORPORATE	PKWY	FL	RF	A	1-4yd 1x
CM	F6 SAWGRASS LLC	1550	SAWGRASS CORPORATE	PKWY	FL	RF	A	1-3yd 2x
CM	F6 SAWGRASS LLC	1551	SAWGRASS CORPORATE	PKWY	FL	RF	A	1-3yd 2x
CM	F6 SAWGRASS LLC	1560	SAWGRASS CORPORATE	PKWY	FL	RF	A	1-3yd 2x
CM	CORPORATE CENTRE II INVES LLC	1571	SAWGRASS CORPORATE	PKWY	FL	RF	A	1-2yd 2x
CM	THE REALTY ASSOC FUND VIII LP&	1580	SAWGRASS CORPORATE	PKWY	FL	RF	A	1-4yd 2x
CM	IP3 ASSOCIATES LLLP	1600	SAWGRASS CORPORATE	PKWY	FL	RF	A	1-8yd 3x
CM	F6 SAWGRASS LLC	1601	SAWGRASS CORPORATE	PKWY	FL	RF	A	1-3yd 2x
CM	BAPTIST HEALTH SOUTH FLORIDA	12472 W	SUNRISE	BLVD	FL	RF	A	1-4yd 3x
CM	MR CHANG'S	12516 W	SUNRISE	BLVD	FL	RF	A	1-1yd 1x
CM	CHIN, EARL	12518 W	SUNRISE	BLVD	FL	RF	A	1-2yd 2x



SUNRISE COMMERCIAL CUSTOMER LIST - OCTOBER 2015

CM	PARTY CITY CORP	12540 W	SUNRISE	BLVD	NJ	RF	A	1-CA 1x
CM	OFFICE DEPOT INC #3284	12550 W	SUNRISE	BLVD	WA	RF	A	1-8yd 1x
CM	CHILI'S GRILL #276	12570 W	SUNRISE	BLVD	OH	RF	A	1-4yd 4x
CM	EVERGLADES PETROLEUM LLC	12580 W	SUNRISE	BLVD	FL	RF	A	1-3yd 3x
CM	WASHINGTON MUTUAL BANK ~	12590 W	SUNRISE	BLVD	WA	RF	A	1-2yd 2x
CM	FIRST WATCH RESTAURANT	12594 W	SUNRISE	BLVD	FL	RF	A	1-6yd 2x
CM	CHICK-FIL-A AT SAWGRASS FSU	12600 W	SUNRISE	BLVD	FL	RF	A	1-3yd comp 2x
CM	HAVERTY'S FURNITURE #442300	12610 W	SUNRISE	BLVD	WA	RF	A	1-4yd 1x
CM	ROSS DRESS FOR LESS INC #1064	12680 W	SUNRISE	BLVD	CA	RF	A	1-4yd 2x
CM	CCRE SEF SAWGRASS LLC	13450 W	SUNRISE	BLVD	FL	RF	A	1-8yd 5x
CM	TGI FRIDAY'S INC	13500 W	SUNRISE	BLVD	WA	RF	A	1-8yd 3x
CM	FIRST COAST ENERGY LLP #136787	13605 W	SUNRISE	BLVD	FL	RF	A	1-6yd 3x
CM	MCDONALD'S CORP	13655 W	SUNRISE	BLVD	FL	RF	A	1-4yd 2x
CM	BANKUNITED SITE 2069 ~	13705 W	SUNRISE	BLVD	WA	RF	A	1-4yd 1x
CM	FEDEX KINKO'S OFFICE & PRINT	13715 W	SUNRISE	BLVD	WA	RF	A	1-4yd 1x
CM	STARBUCKS CORPORATION	13755 W	SUNRISE	BLVD	WA	RF	A	1-4yd 4x
CM	FLAPAN LLC	13815 W	SUNRISE	BLVD	OH	RF	A	1-8yd 4x
CM	EBERT INVESTMENT HOLDINGS LLC	13945 W	SUNRISE	BLVD	FL	RF	A	1-4yd 2x
CM	LA FITNESS INTERNATIONAL LLC	13999 W	SUNRISE	BLVD	WA	RF	A	1-3yd 3x
CM	14201 SUNRISE CONDO ASSOC INC	14201 W	SUNRISE	BLVD	FL	RF	A	1-8yd 1x
CM	FUEGOVIVO SUNRISE CORP	14301 W	SUNRISE	BLVD	FL	RF	A	1-4yd 3x
CM	MORSE OPERATIONS INC	14399 W	SUNRISE	BLVD	FL	RF	A	1-8yd 3x
CM	MORSE OPERATIONS INC	14401 W	SUNRISE	BLVD	FL	RF	A	1-8yd 3x
CM	R & R SUNRISE LAND LLC	14500 W	SUNRISE	BLVD	FL	RF	A	1-4yd 2x
CM	SAWGRASS FORD	14501 W	SUNRISE	BLVD	FL	RF	A	1-8yd 3x
CM	LIBERTY PROPERTY TRUST	13621 NW	12	ST	PA	RF	A	1-8yd 6x
CM	GATEWAY AT SAWGRASS INV LLC	101 NW	136	AVE	FL	RF	A	1-8yd 7x; 1-6yd 7x
CM	GATEWAY AT SAWGRASS INV LLC	133 NW	136	AVE	FL	RF	A	1-4yd 2x; 1-6yd 2x
CM	IKEA FLORIDA LLC #207	151 NW	136	AVE	NE	RF	A	1-4yd 7x
CM	GATEWAY AT SAWGRASS INV LLC	165 NW	136	AVE	FL	RF	A	1-8yd 2x
CM	TM RALPH FUNERAL HOME	371 NW	136	AVE	FL	RF	A	1-2yd 1x
CM	CRAWFORD AND COMPANY	1391 NW	136	AVE	FL	RF	A	1-6yd 5x
CM	LESTER'S 3 INC	1393 NW	136	AVE	FL	RF	A	1-4yd 7x
CM	FRENCH OVERSEAS COMPANY LLC	1401 NW	136	AVE	FL	RF	A	1-8yd 5x
CM	CHRISTENSEN ENTERPRISES S	1751 NW	136	AVE	FL	RF	A	1-6yd 1x

SUNRISE COMMERCIAL CUSTOMER LIST - OCTOBER 2015

CM	MG SAWGRASS/MATTRESS GIANT	1825 NW	136	AVE	TX	RF	A	1-4yd 1x
CM	MIAMI ASSOC OF REALTORS	13680 NW	14	ST	FL	RF	A	1-1yd 2x
CM	SVT SAWGRASS BUILDING A LP	13800 NW	14	ST	FL	RF	A	1-8yd 2x
CM	HBO LATIN AMERICA PRODUCT SVCS	13801 NW	14	ST	FL	RF	A	1-4yd 2x
CM	SVT SAWGRASS BUILDING B LP	14050 NW	14	ST	FL	RF	A	1-6yd 5x
CM	WELLESLEY INN #2805-FE	13600 NW	2	ST	WA	RF	A	1-8yd 2x
CM	LONGSTAR TEXACO OF SAWGRASS	13601 NW	2	ST	FL	RF	A	1-8yd 1x
CM	LA QUINTA INNS INC SITE# 1048	13651 NW	2	ST	WA	RF	A	1-8yd 3x
CM	IRON MOUNTAIN INFORMATION MGT	13700 NW	2	ST	WA	RF	A	1-8yd 3x
CM	IIT MARINA WEST INDUSTRIAL LLC	13800 NW	2	ST	FL	RF	A	2-8yd 1x
CM	SAWGRASS BUSINESS PLAZA LLC	13798 NW	4	ST	FL	RF	A	1-1yd 2x; 1-1yd 2x
CM	GRIBETZ & CO INC #5600	13800 NW	4	ST	WA	RF	A	1-8yd 2x
CM	CREST ULTRASONICS CORP	14000 NW	4	ST	NJ	RF	A	1-3yd 2x
CM	14001 INVESTMENT LLC	14001 NW	4	ST	FL	RF	A	1-2yd 1x
CM	PRECISION RESPONSE CORP	14100 NW	4	ST	CA	RF	A	1-8yd 5x
CM	MDR FITNESS CORP	14101 NW	4	ST	FL	RF	A	1-2yd 2x
CM	D & B TILE	14200 NW	4	ST	FL	RF	A	1-2yd 1x
CM	FLOWERS BAKING CO OF MIAMI	14231 NW	4	ST	NJ	RF	A	1-4yd 1x
CM	LEKI ESTATE HOLDINGS LLC	14251 NW	4	ST	FL	RF	A	1-4yd 1x
CM	NORAN COMPANY	14290 NW	4	ST	CA	RF	A	1-4yd 2x
CM	PALM EXPRESS INC	14291 NW	4	ST	FL	RF	A	1-1yd 1x
CM	AUTOMATIC ENTRANCES INC	14300 NW	4	ST	FL	RF	A	1-2yd 1x
CM	SAWGRASS CAMPUS E LLC	13680 NW	5	ST	FL	RF	A	1-6yd 2x
CM	ARCUS DATA SECURITY INC	13775 NW	5	ST	FL	RF	A	1-3yd 1x
CM	SUNRISE PRESCHOOL	13785 NW	5	ST	FL	RF	A	1-4yd 2x
CM	CARAMA WOOL CORP	13950 NW	8	ST	FL	RF	A	1-1yd 1x
CM	SAWGRASS PROPERTY HOLDINGS LLC	13951 NW	8	ST	FL	RF	A	1-2yd 1x
CM	FACTUM ENTERPRISES LLC	14121 NW	8	ST	FL	RF	A	1-6yd 1x
CM	OWENS & MINOR	14599 NW	8	ST	VA	RF	A	1-6yd 2x
CM	GOLDCO LLC	1855 N	FLAMINGO	RD	AL	RF	A	1-6yd 3x
CM	DON OLSON TIRE & AUTO	1865 N	FLAMINGO	RD	WA	RF	A	1-4yd 2x
CM	ROOMS TO GO	1905 N	FLAMINGO	RD	FL	RF	A	1-4yd 1x
CM	GRAND LUX CAFE LLC #5006	1780	SAWGRASS MILLS	CIR	WA	RF	A	3-4yd 7x
CM	ADVANCE BUSINESS ASSOCIATES 2	1960	SAWGRASS MILLS	CIR	FL	RF	A	1-2yd 1x
CM	BLUE CROSS & BLUE SHIELD OF FL	1970	SAWGRASS MILLS	CIR	FL	RF	A	1-4yd 1x

SUNRISE COMMERCIAL CUSTOMER LIST - OCTOBER 2015

CM	TIRE KINGDOM STORE #136	2550	SAWGRASS MILLS	CIR	OH	RF	A	1-4yd 2x
CM	LZBFG OF SOUTH FLORIDA LLC	2600	SAWGRASS MILLS	CIR	MI	RF	A	1-4yd 1x
CM	BAHAMA BREEZE/GMRI INC	2750	SAWGRASS MILLS	CIR	WA	RF	A	1-8yd 5x
CM	STEAK N SHAKE INC	12541 W	SUNRISE	BLVD	OH	RF	A	1-8yd 3x
CM	FLORIDA BELLS LLC	12575 W	SUNRISE	BLVD	FL	RF	A	1-8yd 3x
CM	ADVENTURE TIRES 2 LLC	12585 W	SUNRISE	BLVD	FL	RF	A	1-4yd 1x
CM	CARMA LLC DBA THE KNIFE	12603 W	SUNRISE	BLVD	FL	RF	A	1-2yd 5x
CM	DAVID'S BRIDAL INC # 34	12605 W	SUNRISE	BLVD	WA	RF	A	1-6yd 2x
CM	RPRSA INVESTMENTS INC	12607 W	SUNRISE	BLVD	FL	RF	A	1-4yd 1x
CM	SOUTHTRUST BANK	12617 W	SUNRISE	BLVD	WA	RF	A	1-2yd 2x
CM	GOLENS PROPERTIES LLC	12651 W	SUNRISE	BLVD	FL	RF	A	1-2yd 1x
CM	BERGERON SAWGRASS PLAZA LLC	12679 W	SUNRISE	BLVD	FL	RF	A	1-6yd 4x
CM	APPLEBEES BAR & GRILL	12719 W	SUNRISE	BLVD	KY	RF	A	1-6yd 2x
CM	BIG LOTS STORES INC	12751 W	SUNRISE	BLVD	WA	RF	A	1-1yd 1x
CM	RTM OPERATING CO	12901 W	SUNRISE	BLVD	WA	RF	A	1-2yd 2x
CM	WASH DEPOT XV INC	12921 W	SUNRISE	BLVD	MA	RF	A	1-2yd 3x
CM	WENDY'S INTERNATIONAL INC	12941 W	SUNRISE	BLVD	OH	RF	A	1-4yd 5x
CM	POLLO OPERATIONS INC	12961 W	SUNRISE	BLVD	OH	RF	A	1-6yd 5x
CM	CASUAL MALE STORE LLC	13001 W	SUNRISE	BLVD	WA	RF	A	1-2yd 1x
CM	FVP SAWGRASS LLC	13011 W	SUNRISE	BLVD	FL	RF	A	2-3yd 2x
CM	ABC LIQUORS	2611 NW	124	AVE	FL	RF	A	1-2yd 1x
CM	MARKHAM PARK WEST	16001 W	STATE ROAD 84		FL	RF	A	1-8yd 1x;1-6yd 2x
CM	CREATIVE CHILD LEARNING CENTER	150	WESTON	RD	FL	RF	A	1-6yd 2x
CM	SBBC # 2914	270 N	NEW RIVER	CIR	FL	RF	A	1-3yd 2x
CM	NKE TRADING AUTOPARTS CORP	15740 W	STATE ROAD 84		FL	RF	A	1-4yd 1x
CM	WESTGATE MEDICAL	15814 W	STATE ROAD 84		FL	RF	A	1-1yd 1x
CM	Z TRAINING & THERAPY CORP	15826 W	STATE ROAD 84		FL	RF	A	1-1yd 1x
CM	BAGEL RAMA	15842 W	STATE ROAD 84		FL	RF	A	1-4yd 2x
CM	COCKTAILS & DREAMS INC	15846 W	STATE ROAD 84		FL	RF	A	1-3yd 7x
CM	ZHANG, HUAN	15936 W	STATE ROAD 84		FL	RF	A	1-2yd 2x
CM	PAEZ EATERY WEST INC	15964 W	STATE ROAD 84		FL	RF	A	1-2yd 2x
CM	7-ELEVEN INC	15988 W	STATE ROAD 84		WA	RF	A	1-8yd 4x
CM	FIRST COAST ENERGY LLP #136786	16000 W	STATE ROAD 84		FL	RF	A	1-2yd 1x
CM	NUEVA GENERACION CRISTIANA INC	16098 W	STATE ROAD 84		FL	RF	A	1-2yd 1x
CM	GRAVEN INTERNATIONAL	16098 W	STATE ROAD 84		FL	RF	A	1-4yd 1x

SUNRISE COMMERCIAL CUSTOMER LIST - OCTOBER 2015

CM	GOLDCO LLC	3	WESTON	RD	AL	RF	A	1-4yd 3x
CM	WACHOVIA BANK FKA FIRST UNION	11	WESTON	RD	WA	RF	A	3-CA 1x
CM	PARK CENTER WEST	55	WESTON	RD	FL	RF	A	1-4yd 1x
CM	GAVET INVESTMENTS INC	500	SHOTGUN	RD	FL	RF	A	1-3yd 1x
CM	NORONA LIMITED	510	SHOTGUN	RD	FL	RF	A	1-8yd 1x
CM	SUNRISE HOLDINGS GROUP INC	731	SHOTGUN	RD	FL	RF	A	1-6yd 2x
CM	NEW RIVER HOLDINGS LLC	801	SHOTGUN	RD	FL	RF	A	1-4yd 3x
CM	A CHILDREN'S CAROUSEL INC	1051	SHOTGUN	RD	FL	RF	A	1-3yd 2x
CM	WESTON SUNRISE INVESTORS LLC	1055	SHOTGUN	RD	FL	RF	A	1-6yd 1x
CM	CAE DEVELOPMENT INC	1301	SHOTGUN	RD	FL	RF	A	1-4yd 1x
CM	CAE DEVELOPMENT INC	1335	SHOTGUN	RD	FL	RF	A	1-4yd 1x
CM	CAE DEVELOPMENT INC	1375	SHOTGUN	RD	FL	RF	A	1-4yd 1x
CM	BFBDA LLC	15481 SW	12	ST	FL	RF	A	1-6yd 2x
CM	YF WESTON INC	15451 SW	13	LN	FL	RF	A	1-3yd 1x
CM	THE FAMILY AT SUNRISE LLC	555 SW	148	AVE	FL	RF	A	1-3yd 3x
CM	TREE OF LIFE CHRISTIAN ACADEMY	1250 SW	160	AVE	FL	RF	A	1-3yd 2x
CM	AMERICAN MULTI CINEMA INC	1338 SW	160	AVE	OH	RF	A	1-6yd 2x
CM	PSP STORES LLC	1368 SW	160	AVE	WA	RF	A	1-8yd 1x
CM	INDIAN TRACE PHASE 2	1372 SW	160	AVE	FL	RF	A	1-8yd 4x
CM	RM AT INDIAN OFFICE LLC	1398 SW	160	AVE	FL	RF	A	1-3yd 1x
CM	LAS BRISAS AT SUNRISE COMM	0	LAS BRISAS	CIR	FL	RF	A	1-CA 1x
CM	HYBRID PETROLEUM INC	5998 W	OAKLAND PARK	BLVD	FL	RF	A	1-3yd 2x
CM	NICK CHELS INC	6000 W	OAKLAND PARK	BLVD	FL	RF	A	1-2yd 2x
CM	AMROUCH INVESTMENTS LLC	6096 W	OAKLAND PARK	BLVD	FL	RF	A	1-1yd 1x
CM	DISCOUNT AUTO PARTS INC	6390 W	OAKLAND PARK	BLVD	WA	RF	A	1-4yd 1x
CM	FL CONF ASSOC OF SEVENTH DAY	6800 W	OAKLAND PARK	BLVD	FL	RF	A	1-4yd 1x
CM	7000 W OAKLAND PARK BLVD INC	7000 W	OAKLAND PARK	BLVD	FL	RF	A	1-4yd 1x
CM	PARAMOUNT CHARTER SCHOOL	7100 W	OAKLAND PARK	BLVD	FL	RF	A	1-6YD 1X
CM	K A S FAMILY LTD	6561	SUNSET STRIP	FL	RF	A		1-2 yd 1x share with 296377 170288
CM	K A S FAMILY LTD	6561	SUNSET STRIP	FL	RF	A		1-2 yd 1x share with 264611 109562
CM	SHANOOK INC	6691	SUNSET STRIP	FL	RF	A		1-3yd 1x
CM	FAST STOP FOOD STORES	6811	SUNSET STRIP	FL	RF	A		1-1yd 1x
CM	TRI BO INC	6839	SUNSET STRIP	FL	RF	A		1-2yd 2x
CM	METTLUS, ANNE JOSEPH & JAMES	6933	SUNSET STRIP	FL	RF	A		1-1yd 2x
CM	ETIENNE, AUGUSTIN	6937	SUNSET STRIP	FL	RF	A		1-1yd 2x

SUNRISE COMMERCIAL CUSTOMER LIST - OCTOBER 2015

CM	JEAN INTERNATIONAL GROUP LLC	6941	SUNSET STRIP	FL	RF	A	1 - 1yd 2x
CM	BEAUMONT, TOMEISHA	6949	SUNSET STRIP	FL	RF	A	1-2yd 1x
CM	HOLDING CORP NALC	3064 NW	60	AVE	FL	RF	A 1-3yd 1x
CM	PAUL STERN	3071 NW	64	AVE	FL	RF	A 1-1yd 1x
CM	BOOTHE, PATTRECA A	3083 NW	64	AVE	FL	RF	A 1-1yd 1x
CM	WONG, BRIAN	3089 NW	64	AVE	FL	RF	A 1-2yd 2x
CM	SUPER 2000 MEAT & FISH INC	3093 NW	64	AVE	FL	RF	A 1-1yd 2x
CM	BRIGHTSTAR CREDIT UNION	5901	DEL LAGO	CIR	FL	RF	A 1-4yd 1x
CM	MILLBANK HORSNELL REALTY LLC	5975 W	SUNRISE	BLVD	FL	RF	A 1-2yd 1x
CM	GK 6073 SUNRISE BLVD INC	6073 W	SUNRISE	BLVD	FL	RF	A 1-2YD 3X
CM	GOLDCO LLC	6125 W	SUNRISE	BLVD	AL	RF	A 1-8yd 2x
CM	HOOK FISH & CHICKEN	6201 W	SUNRISE	BLVD	FL	RF	A 1-2yd 2x
CM	NU TURF	6203 W	SUNRISE	BLVD	FL	RF	A 1-2yd 1x
CM	CHUTNEY ENTERPRISES	6289 W	SUNRISE	BLVD	FL	RF	A 1-6yd 1x
CM	ROYAL PALM PLAZA 6289 LLC	6299 W	SUNRISE	BLVD	FL	RF	A 1-6yd 2x; 1-4yd 2x
CM	6301 SUNRISE LLC	6301 W	SUNRISE	BLVD	FL	RF	A 1-4yd 1x
CM	AMITY CLINIC LLC	1060	SUNSET STRIP	FL	RF	A	1-1yd 2x
CM	ZION CHURCH OF GOD INC	1170	SUNSET STRIP	FL	RF	A	1-1yd 1x
CM	MT HERMON COMM BAPTIST CHURCH	1171	SUNSET STRIP	FL	RF	A	1-1yd 1x
CM	TIFFYLO TIRE INC	1181	SUNSET STRIP	FL	RF	A	1-1yd 1x
CM	SUNRISE ANIMAL HOSPITAL LLC	1190	SUNSET STRIP	FL	RF	A	1-ca 2X
CM	KATIA PETROLEUM INC	1220	SUNSET STRIP	FL	RF	A	1-1yd 1x
CM	GHJ AURORA VENTURES INC	1280	SUNSET STRIP	FL	RF	A	1-2yd 1x
CM	DOMINO'S PIZZA # 4910	1331	SUNSET STRIP	WA	RF	A	1-3yd 1x
CM	MARS MARKET INC	6410	SUNSET STRIP	FL	RF	A	1-3yd 1x
CM	MINTO, S LEWIS & LUCIEN	6772	SUNSET STRIP	FL	RF	A	1-1yd 2x
CM	KANE & VITAL PROPERTY INV LLC	6190 NW	11	ST	FL	RF	A 1-2yd 1x
CM	KAMINSKY-TRIANGOLO	6196 NW	11	ST	FL	RF	A 1-2yd 1x
CM	PARADISE CHILDCARE CORP	6200 NW	11	ST	FL	RF	A 1-2yd 1x
CM	WILL DUDDITS INC	6500 NW	20	ST	FL	RF	A 1-2yd 1x
CM	FCO BROTHERS LLC	6540 NW	20	ST	FL	RF	A 1-4yd 1x
CM	PPG INDUSTRY	6600 NW	20	ST	FL	RF	A 1-2yd 1x
CM	SBBC # 1621	2100 NW	70	AVE	FL	RF	A 1-6yd 5x; 1-2yd 5x
CM	JEWISH ADOPTION & FOSTER CARE	4200 N	UNIVERSITY	DR	FL	RF	A 1-4yd 4x
CM	ATLANTIC COAST ENT LLC #178	4359 N	UNIVERSITY	DR	CT	RF	A 1-2yd 2x

SUNRISE COMMERCIAL CUSTOMER LIST - OCTOBER 2015

CM	MENICUCCI ENTERPRISES LLC	4365 N	UNIVERSITY	DR	FL	RF	A	2-CA 2x
CM	SW CATERING INC	7786 NW	44	ST	FL	RF	A	1-1yd 2x
CM	SUNRISE BUS ENT/JONES FMLY TR	8490 NW	44	ST	FL	RF	A	1-1yd 1x
CM	MATTRESS GIANT	8027 W	OAKLAND PARK	BLVD	TX	RF	A	1-4yd 1x
CM	WATERSTONE CAPITAL SPRINGTREE	8035 W	OAKLAND PARK	BLVD	FL	RF	A	1-1yd 1x
CM	CHECK MART OF FLORIDA #0310	8039 W	OAKLAND PARK	BLVD	CN	RF	A	1-2yd 1x
CM	SHOWBIZ PIZZA INC /#434	8099 W	OAKLAND PARK	BLVD	WA	RF	A	1-4yd 3x
CM	SUNRISE MEDICAL PARK LLC	8395 W	OAKLAND PARK	BLVD	FL	RF	A	1-2yd 5x
CM	CARIBBEAN MM INC	3301 N	UNIVERSITY	DR	FL	RF	A	1-4yd 1x
CM	STARBUCKS COFFEE CO #8301	3551 N	UNIVERSITY	DR	WA	RF	A	1-4yd 4x
CM	WALGREENS #4769	3599 N	UNIVERSITY	DR	WA	RF	A	1-4yd 1x
CM	DELP LLC	3801 N	UNIVERSITY	DR	FL	RF	A	1-4yd 2x
CM	WALKER, ARETHA N	3801 N	UNIVERSITY	DR	FL	RF	A	1-6yd 1x
CM	HOOTERS OF SUNRISE	3805 N	UNIVERSITY	DR	FL	RF	A	1-8yd 2x
CM	POPULAR COMMUNITY BANK	8401 W	OAKLAND PARK	BLVD	PR	RF	A	1-4yd 1x
CM	CS AMERICA OP LLC	8411 W	OAKLAND PARK	BLVD	FL	RF	A	1-6YD 1X
CM	LLEWELLYN OD PA, DANIEL	8451 W	OAKLAND PARK	BLVD	FL	RF	A	1-2yd 1x
CM	CLENA INVESTMENTS INC	8455 W	OAKLAND PARK	BLVD	FL	RF	A	1-2yd 2x
CM	PINE ISLAND PETRO HOLDING LLC	8787 W	OAKLAND PARK	BLVD	FL	RF	A	1-1yd 1x
CM	PINE ISLAND ASSOCIATES LLC	3540 N	PINE ISLAND	RD	FL	RF	A	1-4yd 1x
CM	SUNRISE SPRINGS	3712 N	PINE ISLAND	RD	FL	RF	A	180 units 3rd day
CM	EMERITUS CORP	4201	SPRINGTREE	DR	WA	RF	A	1-8yd 3x; 2-4yd 4x
CM	SPRINGTREE REHAB & HEALTH CARE	4251	SPRINGTREE	DR	FL	RF	A	1-8yd 2x; 1-8yd 3x
CM	STRIKERS FL LLC	8500 NW	44	ST	FL	RF	A	1-6yd 3x
CM	KINDERCARE INC #1228 - 33846	8520 NW	44	ST	WA	RF	A	1-4yd 2x
CM	NEW LIFE FELLOWSHIP CENTER	8702 NW	44	ST	FL	RF	A	1-3yd 1x
CM	K PAL ENTERPRISES INC	3501 NW	84	AVE	FL	RF	A	1-2yd 1x
CM	SBBC # 9356	7720 W	OAKLAND PARK	BLVD	FL	RF	A	1-8yd 2x
CM	CHURCH OF GOD OF PROPHECY INC	7730 W	OAKLAND PARK	BLVD	FL	RF	A	1-1yd 2x
CM	NORTH CENTRAL SUPERINTENDENT	7770 W	OAKLAND PARK	BLVD	FL	RF	A	1-8yd 2x
CM	SA FLORIDA VENTURES LLC	7880 W	OAKLAND PARK	BLVD	FL	RF	A	1-3yd 1x
CM	BARMER ENTERPRISES LLC	2050 N	UNIVERSITY	DR	FL	RF	A	1-2yd 1x
CM	SHAMI LLC	2074 N	UNIVERSITY	DR	FL	RF	A	1-1yd 2x
CM	HOPCO FOODSERVICE MARKETING	2200 N	UNIVERSITY	DR	FL	RF	A	1-3yd 1x
CM	MARIO'S WEST INC	2220 N	UNIVERSITY	DR	FL	RF	A	1-2yd 2x

SUNRISE COMMERCIAL CUSTOMER LIST - OCTOBER 2015

CM	JIA INC	2240 N	UNIVERSITY	DR	FL	RF	A	1-2yd 1x
CM	MCDONALD'S	2260 N	UNIVERSITY	DR	FL	RF	A	1-6yd 2x
CM	WACHOVIA BANK NA	2300 N	UNIVERSITY	DR	WA	RF	A	1-3yd 1x
CM	CQ INVESTMENTS INC	2500 N	UNIVERSITY	DR	PA	RF	A	1-6yd 1x
CM	L & D INVESTORS SUNRISE INC	2574 N	UNIVERSITY	DR	FL	RF	A	1-8yd 1x
CM	GEST HOLDING CORP	2670 N	UNIVERSITY	DR	FL	RF	A	1-4YD 2X
CM	PET SUPERMARKET INC	2696 N	UNIVERSITY	DR	FL	RF	A	1-8yd 1x
CM	SEABIRD INC	2698 N	UNIVERSITY	DR	FL	RF	A	1-2yd 1x
CM	HUMANA MEDICAL PLAN INC	2900 N	UNIVERSITY	DR	ND	RF	A	1-4yd 1x
CM	PRIORITY ONE CREDIT UNION FLA	3000 N	UNIVERSITY	DR	FL	RF	A	1-4yd 1x
CM	COHEN, MOSHE	3050 N	UNIVERSITY	DR	FL	RF	A	1-2yd 2x
CM	GOLDCO LLC	3200 N	UNIVERSITY	DR	AL	RF	A	1-6yd 2x
CM	PNC BANK N.A.	3260 N	UNIVERSITY	DR	OH	RF	A	1-2yd 1x
CM	REGENCY CLUB COMM ASSN INC	2490 E	ARAGON	BLVD	FL	RF	A	1-4yd 1x
CM	SUNRISE LAKES P1	8100 N	SUNRISE LAKES	DR	FL	RF	A	1-2yd 2x
CM	SUNRISE GOLF LLC	7400 NW	24	PL	FL	RF	A	1-3yd 1x; 1-2yd 2x
CM	BANK OF AMERICA	8800 W	OAKLAND PARK	BLVD	ND	RF	A	1-2yd 2x
CM	SUNRISE LAKES P3	2725 N	PINE ISLAND	RD	FL	RF	A	1-2yd 2x
CM	SUNRISE LAKES P3	8921	SUNRISE LAKES	BLVD	FL	RF	A	1-2yd 2x
CM	SUNRISE LAKES P3	9161	SUNRISE LAKES	BLVD	FL	RF	A	1-2yd 2x
CM	SUNRISE LAKES P3	9361	SUNRISE LAKES	BLVD	FL	RF	A	2-2yd 2x
CM	SUNRISE LAKES P3	9500	SUNRISE LAKES	BLVD	FL	RF	A	1-3yd 2x
CM	SUNRISE LAKES P3	9701	SUNRISE LAKES	BLVD	FL	RF	A	1-2yd 2x
CM	SUNRISE LAKES P3	2700 NW	94	WAY	FL	RF	A	1-3yd 1x
CM	INVESTMENT EQUITIES INC	8850 W	OAKLAND PARK	BLVD	FL	RF	A	1-3yd 1x
CM	PINE OAK CONDO INC	8890 W	OAKLAND PARK	BLVD	FL	RF	A	1-2yd 3x
CM	WORLD SAVINGS & LOAN	9001 W	OAKLAND PARK	BLVD	WA	RF	A	1-3YD 2X
CM	AMTRUST BANK	9100 W	OAKLAND PARK	BLVD	OH	RF	A	1-4yd 1x
CM	BRANCH BANKING & TRUST CO	3401 N	PINE ISLAND	RD	WA	RF	A	1-4yd 1x
CM	PINE ISLAND SHOPPES LLC	3511 N	PINE ISLAND	RD	FL	RF	A	1-3yd 3x
CM	FANTASIA CHINESE	3527 N	PINE ISLAND	RD	FL	RF	A	1-1yd 2X
CM	BAPTIST SURGERY & ENDOSCOPY	3737 N	PINE ISLAND	RD	FL	RF	A	1-4yd 3x
CM	THE COLONY CLUB IN SUNRISE	3799 N	PINE ISLAND	RD	FL	RF	A	1-4yd 2x
CM	4001 PINE ISLAND HOLDINGS LLC	4001 N	PINE ISLAND	RD	FL	RF	A	3-6yd 3x
CM	4099 PINE ISLAND RD	4099 N	PINE ISLAND	RD	FL	RF	A	1-4yd 2x

SUNRISE COMMERCIAL CUSTOMER LIST - OCTOBER 2015

CM	EAST WEST BUFFET	4121 N	PINE ISLAND	RD	FL	RF	A	1-8yd 2x
CM	TOA TOA CHINESE	4145 N	PINE ISLAND	RD	FL	RF	A	1-2yd 2x
CM	FAMILY DOLLAR STORE #4197	4173 N	PINE ISLAND	RD	OH	RF	A	1-2yd 1x
CM	ANDOVSKI CORP	4191 N	PINE ISLAND	RD	FL	RF	A	1-2yd 2x
CM	WINN DIXIE INC ~	4201 N	PINE ISLAND	RD	NY	RF	A	1-6yd 5x
CM	CHICOS PIZZA INCORPORATED	4221 N	PINE ISLAND	RD	FL	RF	A	1-2yd 2x
CM	MCDONALD'S	4301 N	PINE ISLAND	RD	FL	RF	A	1-4yd 2x
CM	AMERICAN MULTI CINEMA INC	4321 N	PINE ISLAND	RD	OH	RF	A	1-6yd comp 2x
CM	MATATOF	4399 N	PINE ISLAND	RD	FL	RF	A	1-6yd 1x
CM	NOVA FUELS INC	4401 N	PINE ISLAND	RD	FL	RF	A	1-3yd 1x
CM	SIMPSON STATION INC	5001 N	PINE ISLAND	RD	FL	RF	A	1-2yd 2x
CM	BRITE BLUE POOLS INC	8880 NW	44	ST	FL	RF	A	1-3yd 1x
CM	WAY OF LIFE ASSEMBLY OF GOD	8900 NW	44	ST	FL	RF	A	1-2yd 1x
CM	9000 NW 44 LLC	9000 NW	44	ST	FL	RF	A	1-3yd 1x
CM	ROSENTHAL DDS, BARRY	9200 NW	44	ST	FL	RF	A	1-4yd 1x
CM	SBBC # 2001	8800 NW	50	ST	FL	RF	A	1-6yd 5x; 1-2yd 5x
CM	HARVARD ACADEMY INC	8955 NW	50	ST	FL	RF	A	1-4yd 1x
GV	SBBC	8800 NW	54	CT	FL	RF	A	1-6yd 5x; 1-2yd 5x
CM	DISCOUNT AUTO PARTS LLC	2400 N	NOB HILL	RD	WA	RF	A	1-4yd 1x
CM	SUNRISE LAKES P4	10102	SUNRISE LAKES	BLVD	FL	RF	A	1-6yd 3x
CM	SBBC # 2671	2100 NW	104	AVE	FL	RF	A	1-6yd 5x; 1-2yd 5x
CM	SBBC # 2531	2101 N	PINE ISLAND	RD	FL	RF	A	1-4yd 5x; 1-2yd 5x
CM	ST BERNARD CATHOLIC CHURCH	8275	SUNSET STRIP		FL	RF	A	1-4yd 1x
CM	2185 N UNIVERSITY LLC	2185 N	UNIVERSITY	DR	FL	RF	A	1-3yd 1x
CM	WALGREEN'S #2999	2301 N	UNIVERSITY	DR	WA	RF	A	1-6yd 2x
CM	LUIHN FOUR INC	2451 N	UNIVERSITY	DR	NC	RF	A	1-3yd 2x
CM	WENDY'S INTERNATIONAL	2471 N	UNIVERSITY	DR	OH	RF	A	1-6yd 2x
CM	KENTUCKY FRIED CHICKEN	2491 N	UNIVERSITY	DR	KY	RF	A	1-4yd 2x
CM	UNIVERSITY DRIVE DONUTS LLC	2499 N	UNIVERSITY	DR	MA	RF	A	1-8yd 2x
CM	ANIMAL HOSPITAL OF UNIVERSITY	2585 N	UNIVERSITY	DR	FL	RF	A	1-4yd 1x
CM	FIRST COAST ENERGY LLP #100709	2595 N	UNIVERSITY	DR	FL	RF	A	1-6yd 1x
CM	JUNEL AMERICA LLC	2601 N	UNIVERSITY	DR	FL	RF	A	1-2yd 2x
CM	MORGAN TIRE & AUTO INC	2625 N	UNIVERSITY	DR	WA	RF	A	1-6yd 1x
CM	OCEANS CAR WASH LLC	2651 N	UNIVERSITY	DR	FL	RF	A	1-6yd 1x
CM	POLLO TROPICAL	2675 N	UNIVERSITY	DR	OH	RF	A	1-8yd 3x



SUNRISE COMMERCIAL CUSTOMER LIST - OCTOBER 2015

CM	FAME FARM INC	8260 NW	27	PL	FL	RF	A	1-2yd 1x
CM	SUNRISE PETRO HOLDING LLC	3411 N	HIATUS	RD	FL	RF	A	1-3yd 2x
CM	THE GRAND BAZAAR INC	3415 N	HIATUS	RD	FL	RF	A	1-8yd 4x
CM	MUNOZ MUNOZ GROUP INC	3429 N	HIATUS	RD	FL	RF	A	1-8yd 1x
CM	SBBC # 2881	3233 N	NOB HILL	RD	FL	RF	A	1-6yd 5x; 1-2yd 5x
CM	KFC OF AMERICA	3300 N	NOB HILL	RD	KY	RF	A	1-4yd 2x
CM	ANOTHER GENERATION	9897 W	OAKLAND PARK	BLVD	PA	RF	A	1-4yd 2x
CM	STARBOARD GRP OF SOUTHEAST FL	9960 W	OAKLAND PARK	BLVD	FL	RF	A	1-3yd 3x
CM	HBL ENTERPRISES INC	9970 W	OAKLAND PARK	BLVD	FL	RF	A	1-6yd 1x
CM	DOLGENCORP LLC	9980 W	OAKLAND PARK	BLVD	OH	RF	A	1-4yd 1x
CM	NATIONS BANK/BANK OF AMERICA	9990 W	OAKLAND PARK	BLVD	ND	RF	A	1-2yd 1x
CM	LELE ENTERPRISES	10000 W	OAKLAND PARK	BLVD	FL	RF	A	1-6yd 3x
CM	VISTA MERCADO INC	10001 W	OAKLAND PARK	BLVD	FL	RF	A	1-4yd 2x
CM	JPW ENTERPRISES LLC	10008 W	OAKLAND PARK	BLVD	FL	RF	A	1-3yd 1x
CM	JPMORGAN CHASE BANK	10016 W	OAKLAND PARK	BLVD	WA	RF	A	1-2yd 1x
CM	STRATHMORE OAKLAND LLC	10020 W	OAKLAND PARK	BLVD	FL	RF	A	1-2yd 2x
CM	WACHOVIA BANK FKA FIRST UNION	10077 W	OAKLAND PARK	BLVD	WA	RF	A	1-2yd 1x
CM	JJ TAVERN ENTERPRISES INC	10079 W	OAKLAND PARK	BLVD	FL	RF	A	1-2yd 2x
CM	DOLLAR TREE STORES INC	10153 W	OAKLAND PARK	BLVD	ND	RF	A	1-4yd 1x
CM	S & A UNITED INVESTMENT GRP	10160 W	OAKLAND PARK	BLVD	FL	RF	A	1-2yd 1x
CM	BROWARD COUNTY LIBRARY (PEARL)	10500 W	OAKLAND PARK	BLVD	FL	RF	A	1-2yd 2x
CM	LP LAND DEVELOPMENT INC	10651 W	OAKLAND PARK	BLVD	FL	RF	A	1-6yd 2x
CM	WALGREENS #4568	10881 W	OAKLAND PARK	BLVD	WA	RF	A	1-6yd 2x
CM	ALL SAINTS CATHOLIC CHURCH	10900 W	OAKLAND PARK	BLVD	FL	RF	A	1-8yd 2x
CM	MCDONALD'S	10901 W	OAKLAND PARK	BLVD	FL	RF	A	1-4yd 2x
CM	ECKERD'S DRUG CO # 05056-01	11100 W	OAKLAND PARK	BLVD	WA	RF	A	1-6yd 3x
CM	VAMAS INC	11431 W	OAKLAND PARK	BLVD	FL	RF	A	1-4yd 2x
CM	CARMONA, T & H SANDOVAL & NORA	11449 W	OAKLAND PARK	BLVD	FL	RF	A	1-2yd 2x
CM	CATERING BY JOEL'S PLACE INC	11481 W	OAKLAND PARK	BLVD	FL	RF	A	1-1yd 2x
CM	ENTRADA AT SUNRISE HOA	11300 NW	33	ST	FL	RF	A	1-CA 1x
CM	ENTRADA AT SUNRISE HOA	11300 NW	34	PL	FL	RF	A	1-CA 1x
CM	HEALTH SOUTH OF FT LAUDERDALE	10199 NW	44	ST	WA	RF	A	1-3yd 2x
CM	MCDONALD'S CORPORATION	9220 W	COMMERCIAL	BLVD	FL	RF	A	1-4yd 2x
CM	7-ELEVEN INC	9390 W	COMMERCIAL	BLVD	WA	RF	A	1-2yd 1x
CM	ECKERD STORE # 07900-01	10000 W	COMMERCIAL	BLVD	WA	RF	A	1-6yd 1x

SUNRISE COMMERCIAL CUSTOMER LIST - OCTOBER 2015

CM	COASTAL SERVICE STATION	10290 W	COMMERCIAL	BLVD	FL	RF	A	1-6yd 1x
CM	WEST COMMERCIAL SHELL LLC	10300 W	COMMERCIAL	BLVD	FL	RF	A	1-6yd 2x
CM	ROSEWOOD IND PLAZA	4500 N	HIATUS	RD	FL	RF	A	1-1yd 1x
CM	ORESTES CASARIEGO (WBC)	4574 N	HIATUS	RD	FL	RF	A	1-1yd 1x
CM	4600 COMMERCE CENTER LLC	4630 N	HIATUS	RD	FL	RF	A	1-6yd 3x
CM	VICO	4700 N	HIATUS	RD	FL	RF	A	1-2yd 1x
CM	BUSINESS PARK ON HIATUS INC	4710 N	HIATUS	RD	FL	RF	A	1-1yd 1x
CM	EXCLUSIVE TRIM AND DOORS LLC	4880 N	HIATUS	RD	FL	RF	A	1-6yd 1x
CM	SO FLA COMM INV	5010 N	HIATUS	RD	FL	RF	A	1-2yd 1x
CM	WINGATE COMMERCE CTR OWNERS	5219 N	HIATUS	RD	FL	RF	A	1-2yd 1x
CM	DRIVE LINE INC ~	5260 N	HIATUS	RD	FL	RF	A	1-1yd 1x
CM	AREAWIDE COUNCIL ON AGING BRWD	5300 N	HIATUS	RD	FL	RF	A	1-3yd 1x
CM	AZ REAL ESTATE DVMT LLC	5367 N	HIATUS	RD	FL	RF	A	1-4yd 3x
CM	COURTYARD PLAZA LP	4577 N	NOB HILL	RD	FL	RF	A	1-4yd 1x
CM	METRO BANK	4699 N	NOB HILL	RD	FL	RF	A	1-2yd 1x
CM	SUNRISE TOTAL STORAGE	4747 N	NOB HILL	RD	AZ	RF	A	1-3yd 2x
CM	4747 NOB HILL INC	4747 N	NOB HILL	RD	FL	RF	A	1-4yd 3x
CM	SUNRISE HEALTH CTR	4800 N	NOB HILL	RD	FL	RF	A	3-8yd 7x
CM	JEWISH FEDERATION	5000 N	NOB HILL	RD	FL	RF	A	1-4yd 3x
CM	JAFCO RESPITE & FAMILY RESRCE	5100 N	NOB HILL	RD	FL	RF	A	1-4yd 1x
CM	A & M TAPE	5201 N	NOB HILL	RD	FL	RF	A	1-8yd 1x
CM	B & B BUSINESS CENTER LLC	5349 N	NOB HILL	RD	FL	RF	A	1-8yd 2x; 1-8yd 1x
CM	TDW MANAGEMENT LLC	5501 N	NOB HILL	RD	FL	RF	A	1-2yd 1x
CM	WOOD BUSINESS SYSTEMS INC	5555 N	NOB HILL	RD	FL	RF	A	1-6yd 1x
CM	EDELMAN, LEONARD	5405 NW	102	AVE	FL	RF	A	1-4yd 3x; 1-6yd 2x; 1-6yd 2x; 1-4yd 3x
CM	MING TAK INVESTMENT CO INC	5600 NW	102	AVE	FL	RF	A	1-6yd 1x
CM	FLORIDA CHARTER FOUNDATION INC	4500 NW	103	AVE	FL	RF	A	1-8yd 5x
CM	BENCHMARK CONNECTOR CORP	4501 NW	103	AVE	FL	RF	A	1-3yd 2x
CM	PRIME SUNRISE RENTALS LLC	4503 NW	103	AVE	FL	RF	A	1-2yd 3x
CM	DEVON WILLIAMS MINISTRIES INC	4505 NW	103	AVE	FL	RF	A	1-2yd 1x
CM	U S TIAN SONG INC	4507 NW	103	AVE	FL	RF	A	1-2yd 1x
CM	JENC INC	4545 NW	103	AVE	FL	RF	A	1-1yd 1x
CM	EMPIRE ROOFING CO SOUTHEAST LL	4615 NW	103	AVE	FL	RF	A	1-8yd 2x; 1-2yd 2x
CM	PARC 68 INC	4617 NW	103	AVE	FL	RF	A	1-1yd 1x
CM	ROSE RED LTD INC	4675 NW	103	AVE	FL	RF	A	1-2yd 1x

SUNRISE COMMERCIAL CUSTOMER LIST - OCTOBER 2015

CM	CASARIEGO	4725 NW 103	AVE	FL	RF	A	1-1yd 1x
CM	SUNRISE 103 LLC	4891 NW 103	AVE	FL	RF	A	1-2yd 2x
CM	COURTYARD PROPERTIES	5101 NW 108	AVE	NC	RF	A	1-4yd 3x
CM	CHAUVET REALTY INVESTMENTS LLC	5200 NW 108	AVE	FL	RF	A	1-4yd 1x
CM	COURTYARD DISTRIBUTION CENTER	5201 NW 108	AVE	NC	RF	A	1-4yd 3x
CM	DIGITAL ANTENNA INC	5301 NW 108	AVE	FL	RF	A	2-3yd 1x
CM	SCHOOL OF ISLAMIC STUDIES INC	5455 NW 108	AVE	FL	RF	A	2-4yd 3x
CM	QUINTERO FAMILY PARTNERSHIP	5030 NW 109	AVE	FL	RF	A	1-6yd 1x
CM	TRICUSA PLAZA LLC	5150 NW 109	AVE	FL	RF	A	1-4yd 2x
CM	AERO SPACE ROTABLES INC	5151 NW 109	AVE	FL	RF	A	1-1yd 1x
CM	ELDORADO CLASSICS INC	5181 NW 109	AVE	FL	RF	A	1-1yd 1x
CM	LABOSS TRANSPORTATION SVCS INC	5191 NW 109	AVE	FL	RF	A	1-1yd 1x
CM	RIVERBEND AT LAS OLAS LLC	10002 NW 46	ST	FL	RF	A	1-4yd 1x; 2-4yd 1x
CM	SUNRISE 46 INC	10101 NW 46	ST	FL	RF	A	1-4yd 2x
CM	CASARIEGO, ORESTES AND CELESTE	10200 NW 46	ST	FL	RF	A	1-1yd 1x
CM	SPECTRUM WEST	10267 NW 46	ST	FL	RF	A	1-4yd 1x
CM	VITOLO	10240 NW 47	ST	NC	RF	A	1-6yd 3x
CM	SUNRISE PARK INVESTORS	10001 NW 50	ST	FL	RF	A	1-3yd 2x; 4-2yd 1x
CM	SUNRISE PALMS COMMERCE CENTER	10002 NW 50	ST	FL	RF	A	2-4yd 2x
CM	SMF ASSOC	10210 NW 50	ST	FL	RF	A	1-6yd 1x
CM	SUNRISE THREE IND	10301 NW 50	ST	FL	RF	A	1-2yd 1x
CM	GOLDMAN FILTRATION	10304 NW 50	ST	FL	RF	A	1-2yd 1x
CM	BRANDEX COMPONENTS INC	10440 NW 50	ST	FL	RF	A	1-2yd 1x
CM	BOB'S AUTOMOTIVE	10480 NW 50	ST	FL	RF	A	1-3yd 1x
CM	MEDFORD FLORIDA	10494 NW 50	ST	FL	RF	A	1-4yd 1x
CM	SUNRISE TWO IND	10501 NW 50	ST	FL	RF	A	1-2yd 1x
CM	FLORIDA MEDICAL SERVICES	10801 NW 50	ST	FL	RF	A	1-2yd 1x
CM	AALB LLC	10821 NW 50	ST	FL	RF	A	1-4yd 1x
CM	J & L INTERNATIONAL MARKETING	10895 NW 50	ST	FL	RF	A	1-4yd 1x
CM	J & A HOLDINGS LLC	10870 NW 52	ST	FL	RF	A	1-2yd 1x
CM	QUINTERO BLDG B & C	10877 NW 52	ST	FL	RF	A	1-2yd 1x
CM	A R C OF BROWARD	10250 NW 53	ST	FL	RF	A	1-8yd 3x; 1-8yd 2x; 1-4yd 2x
CM	SUSSMAN, ROBERT	10275 NW 53	ST	FL	RF	A	1-8yd 2x
CM	CHARLESTON ENTERPRISES LLC	10300 NW 53	ST	FL	RF	A	1-8yd 1x
CM	SURPASS TECHNOLOGY INC	10401 NW 53	ST	FL	RF	A	1-3yd 1x

SUNRISE COMMERCIAL CUSTOMER LIST - OCTOBER 2015

CM	EDELMAN TR, LEONARD	10551 NW	53	ST	FL	RF	A	2-4yd 2x
CM	EDELMAN TR, LEONARD	10700 NW	53	ST	FL	RF	A	2-4yd 2x
CM	EDELMAN, LEONARD	10791 NW	53	ST	FL	RF	A	1-4yd 2x
CM	SOVRAN/U STORE-IT #40	10300 NW	55	ST	NY	RF	A	1-6yd 1x
CM	MICHELE CUTRI OF PORTOFINO PLZ	10310 NW	55	ST	FL	RF	A	1-4yd 2x; 1-6yd 1x
CM	SUNRISE 55 INC	10330 NW	55	ST	FL	RF	A	1-2yd 4x
CM	THE FAITH CENTER INC	5555 NW	95	AVE	FL	RF	A	1-8yd 1x
CM	EASTERN FIN FL FED C U	7751 W	OAKLAND PARK	BLVD	FL	RF	A	1-1yd 1x
CM	ATRIUM SUNRISE LLC	7771 W	OAKLAND PARK	BLVD	FL	RF	A	1-3yd 4x
CM	EQUINOX SYSTEMS AKA AVOCENT	7775 W	OAKLAND PARK	BLVD	AL	RF	A	1-6yd 2x
CM	SOUTHLAND CORPORATION #32768	7795 W	OAKLAND PARK	BLVD	WA	RF	A	1-4yd 2x
CM	WASHINGTON MUTUAL BANK ~	3300 N	UNIVERSITY	DR	WA	RF	A	2-CA 2x
CM	FEDEX KINKOS INC #0933	3396 N	UNIVERSITY	DR	WA	RF	A	1-4yd 2x
CM	JONES LANG LASALLE INC	3398 N	UNIVERSITY	DR	WA	RF	A	1-4yd 2x
CM	DOLLAR TREE STORES INC	3426 N	UNIVERSITY	DR	ND	RF	A	1-4yd 1x
CM	PATEL BROTHERS OF SUNRISE FL	3428 N	UNIVERSITY	DR	FL	RF	A	1-8yd 3x
CM	LA FITNESS INTERNATIONAL LLC	3500 N	UNIVERSITY	DR	WA	RF	A	1-3yd 2x
CM	HONEY BAKED HAM CO LLC	3548 N	UNIVERSITY	DR	GA	RF	A	1-4yd 2x
CM	D MORE HELP INC	3800 N	UNIVERSITY	DR	FL	RF	A	1-1yd 2x
CM	LEVY, MIA	3816 N	UNIVERSITY	DR	FL	RF	A	1-2yd 1x
CM	KULUCK LLC	3828 N	UNIVERSITY	DR	FL	RF	A	1-2yd 2x
CM	LA CASITA ROJA DE MILAGROS	3856 N	UNIVERSITY	DR	FL	RF	A	1-1yd 2x
CM	WATERBRIDGE WEST	7611 NW	39	ST	FL	RF	A	48 units 3rd day
CM	TORRE FUERTE CHRISTIAN CHURCH	7800 NW	39	ST	FL	RF	A	1-4yd 1x
CM	SUNSHINE GASOLINE DISTRIBUTORS	2300 N	NOB HILL	RD	FL	RF	A	1-4yd 1x
CM	THE SOUTHLAND CORP #32678	9998	SUNSET STRIP		WA	RF	A	1-3yd 2x
CM	GREENWOOD LEGACIES INC	10013	SUNSET STRIP		FL	RF	A	1-3yd 2x
CM	NEW YORK MART SUNRISE INC	10095	SUNSET STRIP		FL	RF	A	1-8yd 7x; 1-6yd 4x
CM	OAKLAND ACADEMY INC	8250 W	OAKLAND PARK	BLVD	FL	RF	A	1-3yd 2x
CM	SS SUNRISE INC	8300 W	OAKLAND PARK	BLVD	FL	RF	A	1-2yd 1x
CM	WHOLESOME MEAL LLC	8308 W	OAKLAND PARK	BLVD	FL	RF	A	1-1yd 2x
CM	RAZZAQ, MOHAMMAD	8330 W	OAKLAND PARK	BLVD	FL	RF	A	1-2yd 2x
CM	KAM'S ROTI SHOP LLC	8336 W	OAKLAND PARK	BLVD	FL	RF	A	1-1yd 1x
CM	ROYAL SWEETS INC	8344 W	OAKLAND PARK	BLVD	FL	RF	A	1-1yd 2x
CM	SELMED INVESTMENT GROUP LLC	8358 W	OAKLAND PARK	BLVD	FL	RF	A	1-6yd 1x

SUNRISE COMMERCIAL CUSTOMER LIST - OCTOBER 2015

CM	DUNAN LLC	8360 W	OAKLAND PARK	BLVD	FL	RF	A	1-3yd 1x
CM	AMERICARE MEDICAL CENTER	8376 W	OAKLAND PARK	BLVD	FL	RF	A	1-8yd 1x
CM	OAKLAND PETROLEUM INC	8400 W	OAKLAND PARK	BLVD	FL	RF	A	1-2yd 1x
CM	BELLSOUTH	8650 W	OAKLAND PARK	BLVD	OH	RF	A	1-4yd 3x
CM	BELLSOUTH	8650 W	OAKLAND PARK	BLVD	OH	RF	A	1-8yd 5x
CM	BELLSOUTH	8750 W	OAKLAND PARK	BLVD	OH	RF	A	1-4yd 3x
CM	SUNRISE LAKES P2	8120	SUNRISE LAKES	BLVD	FL	RF	A	1-2yd 2x
CM	AUTOZONE STORES INC	3001 N	UNIVERSITY	DR	WA	RF	A	1-8yd 1x

Total

## **CITY OF SUNRISE**

### **BUS BENCHES - RECEPTACLE COLLECTION - HAULER COLLECTION**

#### **Minimum Two Times Per Week Collection Or As Frequently As Needed**

- 1 Sunrise Blvd / NW 136th Avenue (SE Corner)
- 2 Sunrise Blvd (Adjacent to Washington Mutual Bank)
- 3 NW 136th Avenue (Adjacent to the Arena)
- 4 Oakland Park Blvd. / C-42 Canal (South Side)
- 5 Oakland Park Blvd. / Josh Lee Blvd
- 6 Oakland Park Blvd. / Walgreen's
- 7 Oakland Park Blvd. / Welleby Square
- 8 Oakland Park Blvd. / Pine Island (SW Corner @ North Broward Hospital)
- 9 Oakland Park Blvd. / Pine Island (SE Corner @ Bell South Building)
- 10 Oakland Park Blvd. / Pine Island (NW Corner)
- 11 Oakland Park Blvd. (West of University @ Chuckie Cheese)
- 12 Oakland Park Blvd. / NW 68th Avenue
- 13 Oakland Park Blvd. @ Wal-Mart
- 14 Sunset Strip / NW 68th Avenue (SW Corner)
- 15 Sunset Strip / NW 64th Avenue (SW Corner)
- 16 Sunset Strip / NW 63rd Avenue (SE Corner)
- 17 Sunset Strip / NW 20th Street (NW Corner)
- 18 Sunset Strip / NW 15th Street
- 19 Sunset Strip @ Burger King
- 20 Sunset Strip / Del Lago Circle (SE Corner)
- 21 Sunset Strip / NW 12th Court (SE Corner)
- 22 NW 15th Street / NW 60th Avenue (SW Corner)
- 23 NW 60th Avenue / NW 19th Street (SW Corner)
- 24 Sunset Strip / NW 70th Avenue (SW Corner)
- 25 Sunset Strip / NW 82nd Avenue (NW Corner)
- 26 Sunrise Lakes Blvd - Westbound (Building No. 150)
- 27 Sunrise Lakes Blvd - Westbound (Building No. 128)
- 28 Sunrise Lakes Blvd - Westbound (Building No. 122)
- 29 Sunrise Lakes Blvd - Eastbound (Building No. 121)
- 30 Sunrise Lakes Blvd - Eastbound (Building No. 86)
- 31 Sunrise Lakes Blvd - Westbound (Building No. 74)
- 32 Sunrise Lakes Blvd - Eastbound (Building No. 73)
- 33 Sunrise Lakes Blvd - Westbound (Clubhouse East of Pine Island)
- 34 Sunrise Lakes Blvd - Eastbound (Building No. 45)
- 35 Sunrise Lakes Blvd - Westbound (Building No. 49)
- 36 Sunrise Lakes Blvd - Westbound (Building No. 54)
- 37 Sunrise Lakes Blvd - Eastbound (Building No. 41)
- 38 Sunrise Lakes Blvd - Westbound (Building No. 58)
- 39 Sunrise Lakes Blvd - Westbound (Building No. 36)
- 40 Sunrise Lakes Blvd - Westbound (Hilton Soccer Field)
- 41 Sunrise Lakes Drive North - Eastbound (Clubhouse)
- 42 Sunrise Lakes Drive North - Westbound (Building No. 29)
- 43 Sunrise Lakes Drive North - Eastbound (Building No. 25)
- 44 Sunrise Lakes Drive North - Eastbound (Building No. 23)
- 45 Sunrise Lakes Drive North - Westbound (Building No. 33)
- 46 Sunrise Lakes Drive North - Westbound (Building No. 34)

- 47 Sunrise Lakes Drive East - Northbound (Quail Run Building No. 21)
- 48 Sunrise Lakes Drive East - Northbound (Quail Run Building No. 3) No Receptacle-need one
- 49 Sunrise Lakes Drive East - Southbound (Building No. 20)
- 50 Sunrise Lakes Drive East - Northbound (Fairways at Sunrise across from Building No. 18)
- 51 Sunrise Lakes Drive East - Northbound (Fairways at Sunrise across from Building No. 11)
- 52 Sunrise Lakes Drive East - Southbound (Building No. 9)
- 53 Sunrise Lakes Drive West - Northbound (Building No. 6)
- 54 Sunrise Lakes Drive West - Northbound (Building No. 4)
- 55 Nob Hill Road / Sunrise Lakes Blvd - Northbound (NE Corner)
- 56 Nob Hill Road - Southbound (across from Waterford)
- 57 Oakland Park Blvd. / Front of City Hall
- 58 Flamingo (North of 136th St)
- 59 Sunrise Blvd (Adjacent old K-Mart)
- 60 University Drive / Sunset Strip
- 61 Northbound at Bank-Southtrust
- 62 University at Lowe's
- 63 University (Northbound) Springtree Meadow
- 64 North of Hiatus - Bench Only
- 65 Sunrise Lakes Blvd along Access Road for Entrance C between Building 75 & 74
- 66 Oakland Park Blvd. / East of University South Side - Bench Only
- 67 Atrium Drive
- 68 Nob Hill Road (Southbound) just North of Sunrise Lakes Blvd
- 69 Commercial Blvd @ Pine Bay
- 70 8th Street and 136th Avenue (NE Corner)
- 71 Azure Alley & 136th Avenue

## HISTORY OF SUNRISE

The City of Sunrise was incorporated in 1961 by Norman Johnson - an innovative developer whose model homes attracted buyers to what was then the remote western edge of Broward County in southeast Florida.

Originally known as Sunrise Golf Village, the City had a population of 4,300 and comprised just 1.75 square miles by 1967. During the 1970s - as Broward County began to push west - the City experienced its first real growth.

In 1971, the City, by referendum, changed its name to the City of Sunrise. Through annexation, Sunrise eventually expanded to its current boundaries - encompassing more than 18 square miles, reaching the Everglades and dropping south of I-595/State Road 84. The City is situated approximately six miles west of Fort Lauderdale, and is adjoined by the communities of Weston, Davie, Tamarac, Lauderhill and Plantation.

By October 1984, the City had reached an estimated population of 50,000. In the mid 1980s, growth gave way to challenges as the City was faced with financial difficulties, limited economic opportunities and a lack of adequate civic amenities. Fortunately, the City's Commission and residents had the foresight to recognize that Sunrise could do better.

Prompted by that realization, the City of Sunrise began its metamorphosis. In the early '90s, Sunrise worked to put its financial house in order, rebuild its infrastructure and had begun to establish itself as a center for corporate headquarters. By the mid 1990s, the City was recognized as one of the leading municipalities in South Florida.

In 1998, the BB&T Center (formerly known as the National Car Rental Center) opened its doors to tremendous fanfare. This state-of-the-art arena - the second largest in the nation - serves as the home of the NHL's Florida Panthers hockey team and hosts top national entertainment and events. Sunrise has also developed into one of Florida's top tourist destinations, attracting several million national and international visitors each year with an extensive assortment of shopping and entertainment choices. The City's appeal is further enhanced by its convenient, accessible location in the heart of the tri-county area. The City is in close proximity to the Florida Turnpike and I-95, and is bordered by the Sawgrass Expressway, I-75 and I-595.

Over the last decade, the City has fulfilled a commitment to improving residents' quality of life with approximately \$325 million in capital improvements completed or underway - the most significant public investment in a community being made by any municipality in Broward County today. At the same time, Sunrise has maintained the same property tax millage rate for the past seven years.

Sunrise offers its residents a variety of attractive, well-maintained neighborhoods - from private gated golf-course communities to quality rental properties. Sunrise also continues to provide its growing population with first-rate services, and is the county's recognized leader in providing quality-of-life facilities for residents. The City offers a wide variety of recreational opportunities, including a soccer club, golf course, a tennis club, playgrounds and municipal swimming pools - as well as a Senior Center and a Civic Center complex featuring a 300-seat theater, an art gallery and banquet facilities.



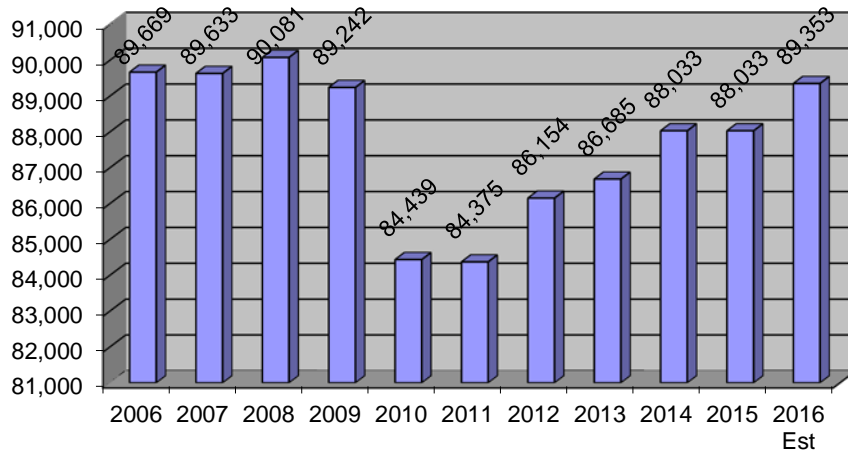
Sunrise is also home to eleven public schools, two post offices and a public library.

*Today, Sunrise boasts its own flourishing job market and has emerged as the county's leader in commerce, having developed the largest corporate office park in South Florida. From humble beginnings, Sunrise has also grown into a sophisticated city of culture - offering residents and visitors abundant opportunities to experience art, theatre, fine dining and first-class entertainment.*

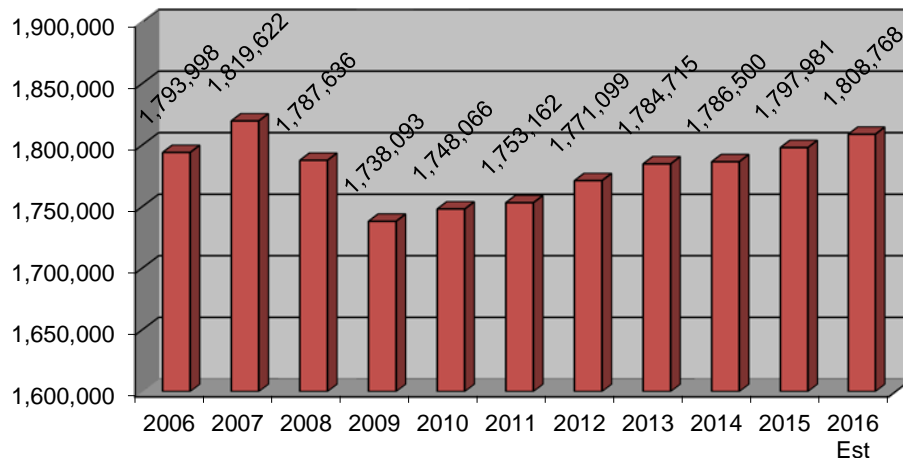
## **DEMOGRAPHICS**

The City of Sunrise is located in the west-central region of Broward County, Florida. The 2010 Census showed a decrease in the population of the City due to the economic downturn. Current data shows that the city has had a 4.3% population increase since 2010 and is trending towards 2008 population numbers. The population is expected to increase over the next several years. Population data, as illustrated below, was based on information obtained from Broward County, the U.S. Census Bureau, and the Bureau of Economic and Business Research at the University of Florida.

### **City of Sunrise Population**



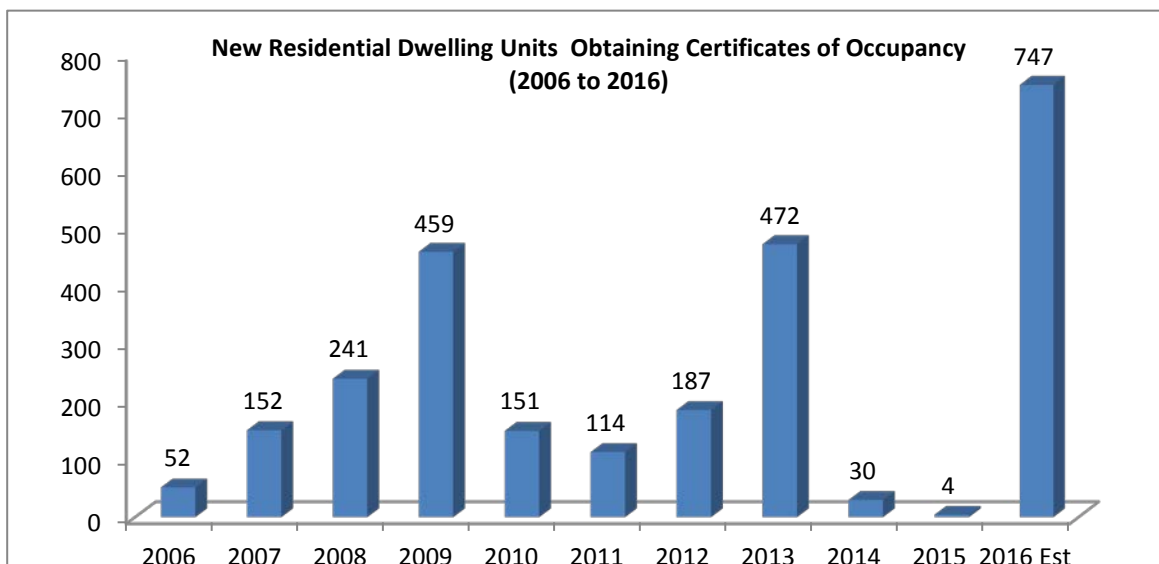
### **Broward County Population**



The graph above illustrates that the population in Broward County peaked in 2007 and bottomed out at 1,738,093 in 2009. Since then, Broward County has had moderate increases in population and climbing steadily back towards 2007 numbers.

### **City Developments**

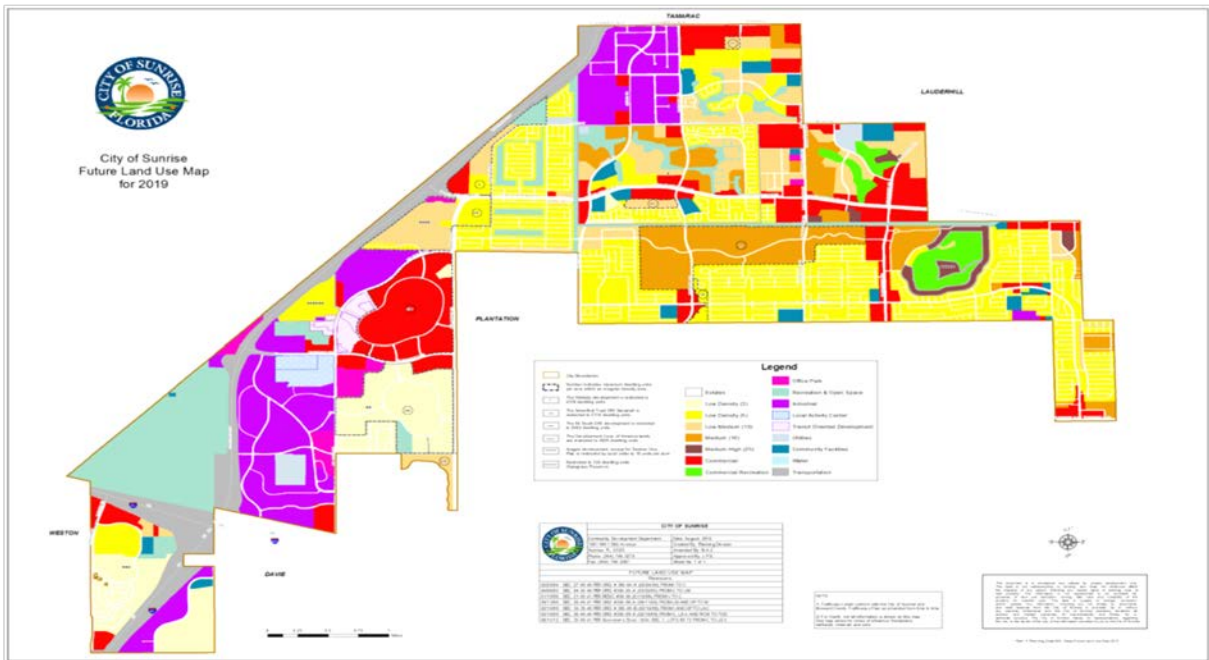
During the late 1990's and early 2000's, Sunrise experienced an increase in single family and multi-family construction throughout the western part of the City. However, due to the limited availability of land in the City, recent residential development has primarily been multi-family. The peaks in 2008 were due to the Artesia and Tao developments, and the Nexus development in 2013. In FY2014, several multi-family projects commenced construction in the western part of the City. The City expects the first residential condominium tower associated with the Metropica Development to begin construction in 2015 which will add 263 residential units to the community in 2016, with sales prices ranging from \$300,000 to \$1 million.



# Economic Outlook

The City of Sunrise is currently experiencing a significant amount of growth in the western portion of the City. American Express has begun development on a 400,000 square foot office campus which will house over 3200 employees. In addition, Sawgrass Mills Mall is currently constructing 80,000 square feet of commercial area, with plans to construct another 150,000 square feet along with two parking garages in the next few years. Also in construction are Portico, a 4112 unit rental apartment and AMLI, a 325 unit rental apartment. The Metropica project has received approval from the City Commission to construct a 236 unit residential tower, which is the first of eight high rise residential towers planned. Metropica also plans to construct over 400,000 square feet of commercial property, 200,000 square feet of office and 300 units of rental apartment within the next five years.

## COMPREHENSIVE MAP



# CITY FACILITIES AND AMENITIES

