

## COMMUNITY | Canoe/Kayak Launch LOS (3 Miles)

Currently, there are only two (2) canoe/kayak launch locations within three (3) miles of Sunrise; Markham Park and the Sawgrass Sanctuary.

**Figure 2.3I** illustrates that the only portions of the city within the service area are those in the southwestern corner, which accounts for less than 20% of Sunrise residents.

If the City wishes to increase their LOS for canoe/kayak launches it could do so by including launch points at existing parks with a large enough water body such as Welleby Park. It could also do so by including a launch point at any of the applicable undeveloped park sites.

There may be an opportunity for the development of an interconnected blueways system utilizing the existing canals within the city.



**Kayaker at Markham Park**

Figure 2.31 Canoe/Kayak Launch (3 Miles)



# COMMUNITY | Canoe/Kayak Launch

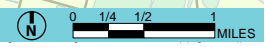
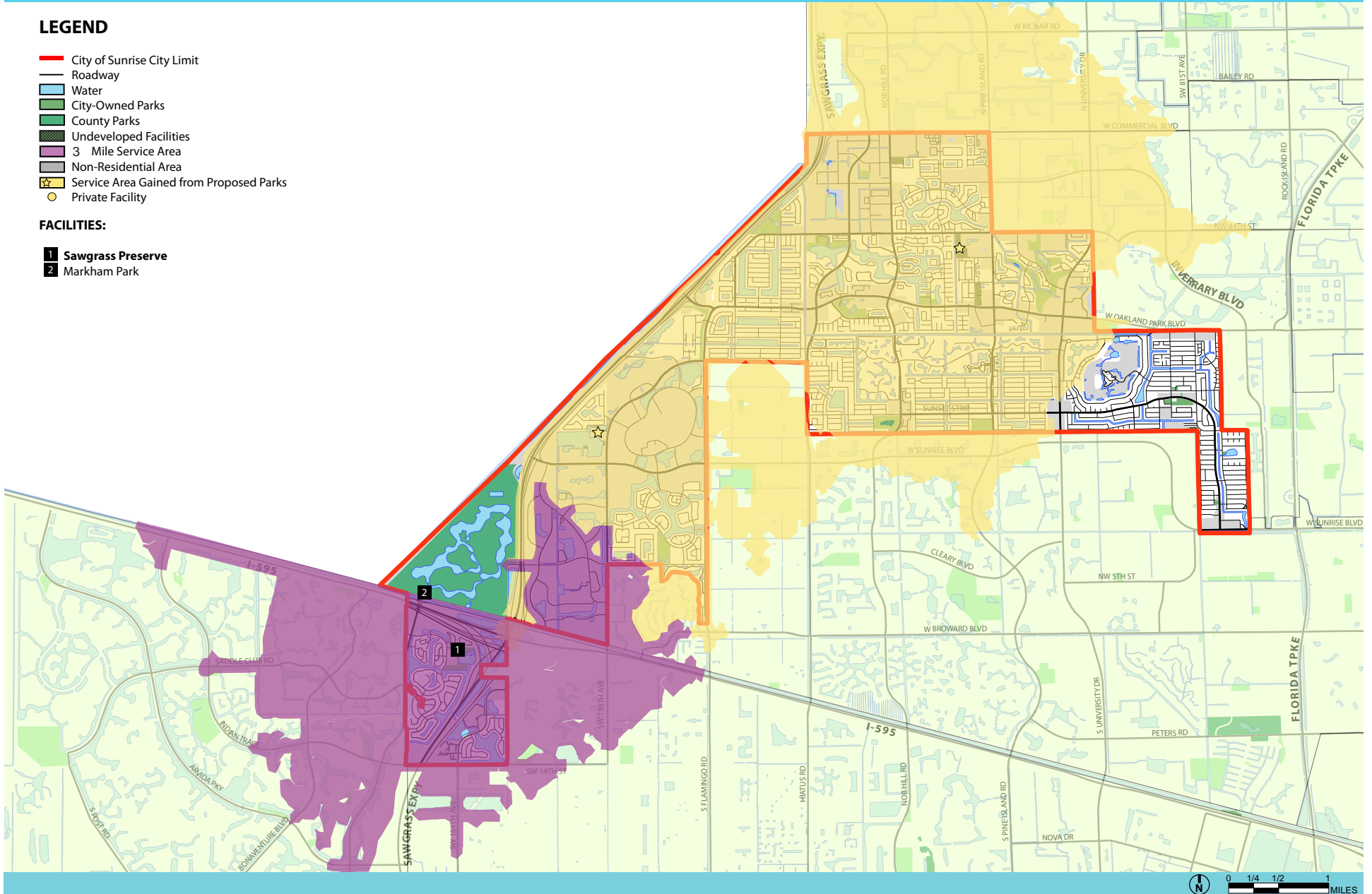
3 MILE SERVICE AREA OF PUBLIC FACILITIES

**LEGEND**

- City of Sunrise City Limit
- Roadway
- Water
- City-Owned Parks
- County Parks
- Undeveloped Facilities
- 3 Mile Service Area
- Non-Residential Area
- Service Area Gained from Proposed Parks
- Private Facility

**FACILITIES:**

- 1 Sawgrass Preserve
- 2 Markham Park



## COMMUNITY | Recreation Center LOS (3 Miles)

A recreation center is defined as any park facility having a multi-purpose gymnasium. Sunrise has two such recreation centers; one at the Sunrise Civic Center and the other at the Village Multi-Purpose Center.

Sufficient data was not available for the project team to be able to evaluate private, indoor recreation facilities.

**Figure 2.3m** illustrates that there is a gap in access beginning at the Rowan Lake/Sawgrass Preserve parksite and extending to the southwestern corner of the city.

If the City were to include a recreation center at the proposed Rowan Lake/Sawgrass Preserve park site it would partially close this gap, however the communities south of I-595 would still have to travel further than 3 miles to access it.



**Gymnasium at the Village Multi-Purpose Center**

Figure 2.3m Recreation Center (3 Miles)

# COMMUNITY | Recreation Center

## 3 MILE SERVICE AREA OF PUBLIC FACILITIES

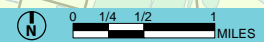
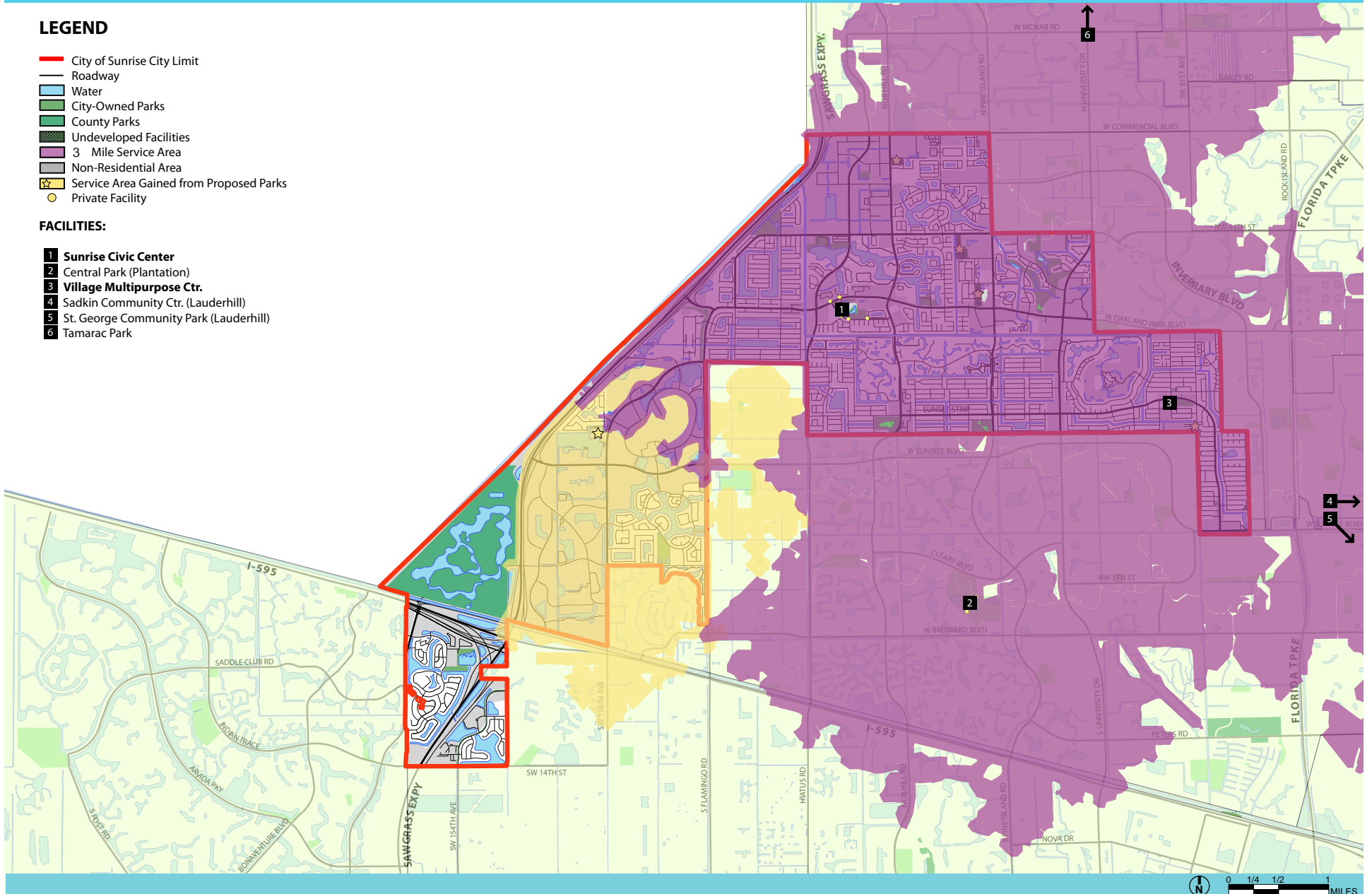


### LEGEND

- City of Sunrise City Limit
- Roadway
- Water
- City-Owned Parks
- County Parks
- Undeveloped Facilities
- 3 Mile Service Area
- Non-Residential Area
- ★ Service Area Gained from Proposed Parks
- Private Facility

### FACILITIES:

- 1 Sunrise Civic Center
- 2 Central Park (Plantation)
- 3 Village Multipurpose Ctr.
- 4 Sadkin Community Ctr. (Lauderhill)
- 5 St. George Community Park (Lauderhill)
- 6 Tamarac Park



## COMMUNITY | Meeting Room LOS (3 Miles)

Many of the parks in Sunrise have incorporated a public meeting room facility. **Figure 2.3n** shows that over 90% of Sunrise Residents can drive three (3) miles or less to a public meeting room.

The only gap in access occurs in the Sunrise Lakes Phase 3 HOA community. While not being served by the City's facilities, many of these private communities also provide meeting rooms for their residents that could satisfy their need.



Meeting room at the New River Civic Center

Figure 2.3n Meeting Room (3 Miles)



# COMMUNITY | Meeting Room

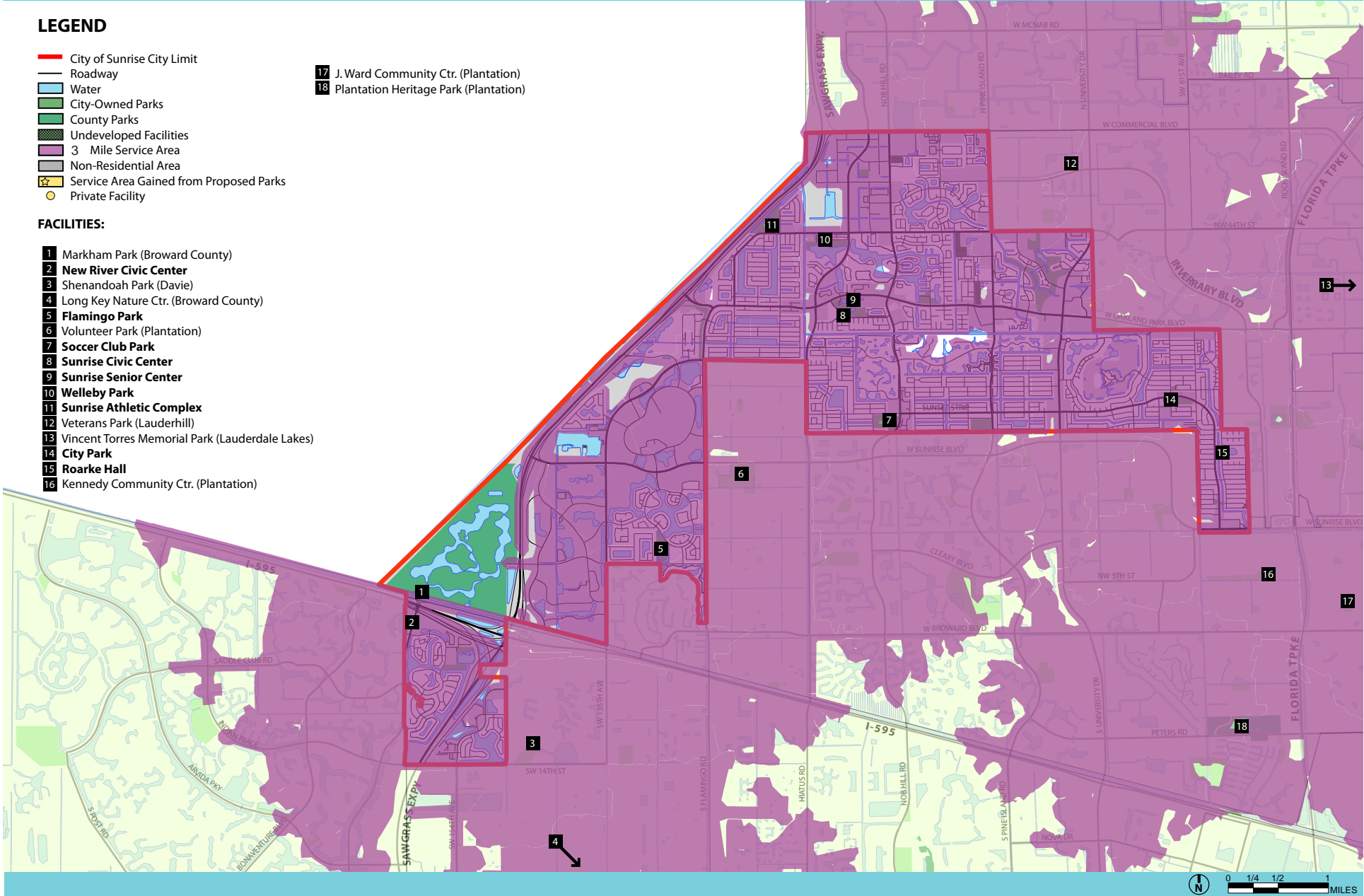
3 MILE SERVICE AREA OF PUBLIC FACILITIES

### LEGEND

- City of Sunrise City Limit
- Roadway
- Water
- City-Owned Parks
- County Parks
- Undeveloped Facilities
- 3 Mile Service Area
- Non-Residential Area
- Service Area Gained from Proposed Parks
- Private Facility

### FACILITIES:

- 1** Markham Park (Broward County)
- 2** New River Civic Center
- 3** Shenandoah Park (Davie)
- 4** Long Key Nature Ctr. (Broward County)
- 5** Flamingo Park
- 6** Volunteer Park (Plantation)
- 7** Soccer Club Park
- 8** Sunrise Civic Center
- 9** Sunrise Senior Center
- 10** Welleby Park
- 11** Sunrise Athletic Complex
- 12** Veterans Park (Lauderhill)
- 13** Vincent Torres Memorial Park (Lauderdale Lakes)
- 14** City Park
- 15** Roarke Hall
- 16** Kennedy Community Ctr. (Plantation)
- 17** J. Ward Community Ctr. (Plantation)
- 18** Plantation Heritage Park (Plantation)



## COMMUNITY | Cricket LOS (3 Miles)

Although Sunrise does not currently offer a cricket facility, the interviews and public workshops indicated that many of the residents from the southeastern portion of the city participate in the sport. **Figure 3.2o** illustrates that fewer than 20% of the city's residents are within a three (3) mile driving distance of a cricket facility.

There are two (2) cricket facilities within a three (3) mile driving distance of Sunrise; the Central Broward Regional Park and the St. George Community Park (both in Lauderhill). Although these facilities are not located in Sunrise, their service areas do extend to the southeastern corner of the city.

Because of the large area required for a full size cricket field, the only undeveloped facility capable of accommodating such a facility is the 44th Street parksite to the North. However, the service area offered by this facility would not to accommodate the residents living in the southeastern portion of the city.



**Cricket pitch at the Central Broward Regional Park in Lauderhill**

Figure 2.3o Cricket (3 Miles)

# COMMUNITY | Cricket

## 3 MILE SERVICE AREA OF PUBLIC FACILITIES

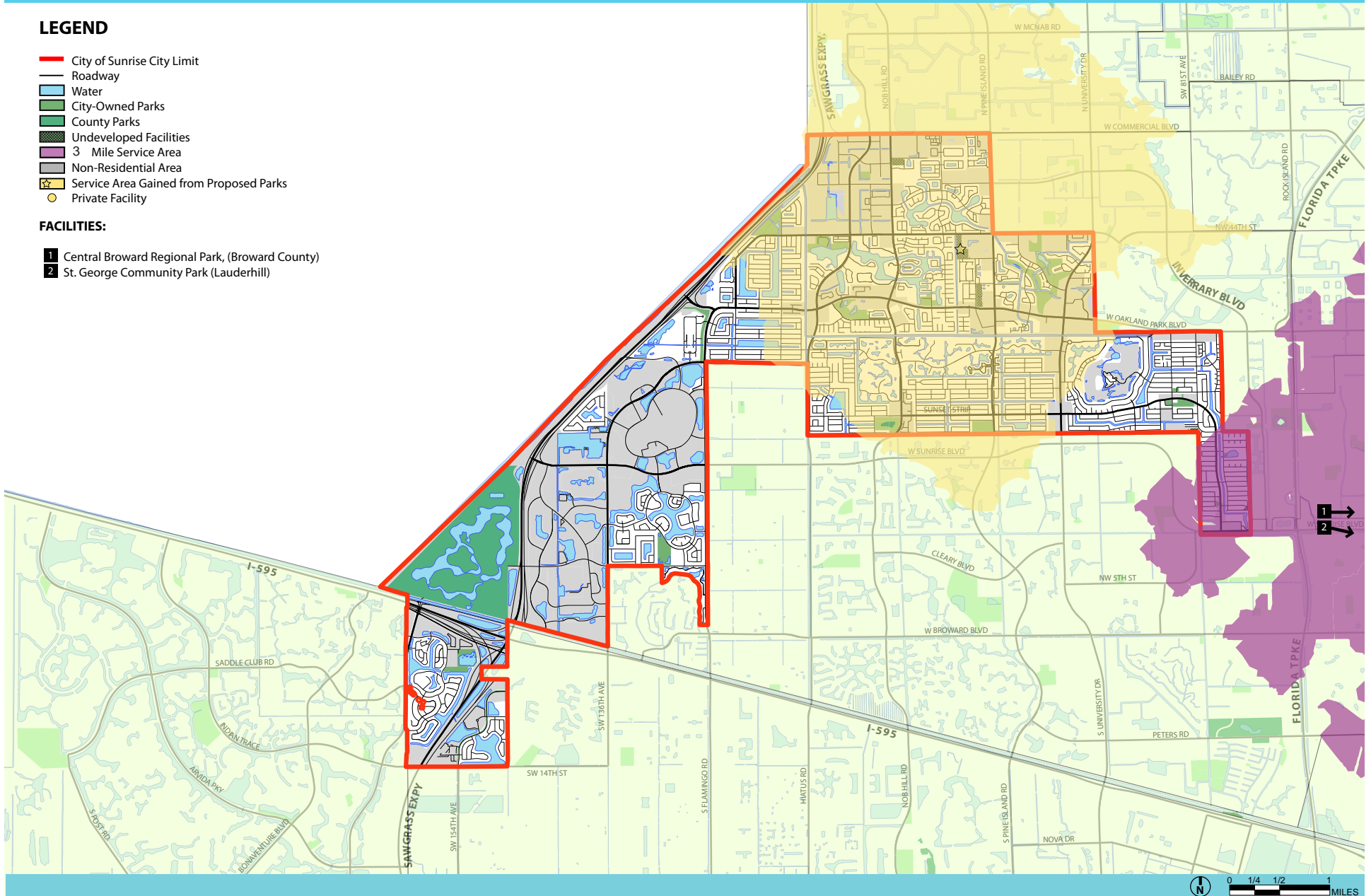


### LEGEND

- City of Sunrise City Limit
- Roadway
- Water
- City-Owned Parks
- County Parks
- Undeveloped Facilities
- 3 Mile Service Area
- Non-Residential Area
- Service Area Gained from Proposed Parks
- Private Facility

### FACILITIES:

- 1 Central Broward Regional Park, (Broward County)
- 2 St. George Community Park (Lauderhill)





**REGION | Hiking/Nature Trails LOS (10 Miles)**

**Figure 2.3p** illustrates that there are no hiking/nature trail facilities within Sunrise. There are eleven (11) facilities within a ten (10) mile driving distance of the city and the combined service areas from these facilities provide access for every Sunrise resident.



**Nature trail at Tree Tops Park in Davie**

Figure 2.3p Hiking/Nature Trail (10 Miles)

# REGION | Hiking/Nature Trail

## 10 MILE SERVICE AREA OF PUBLIC FACILITIES

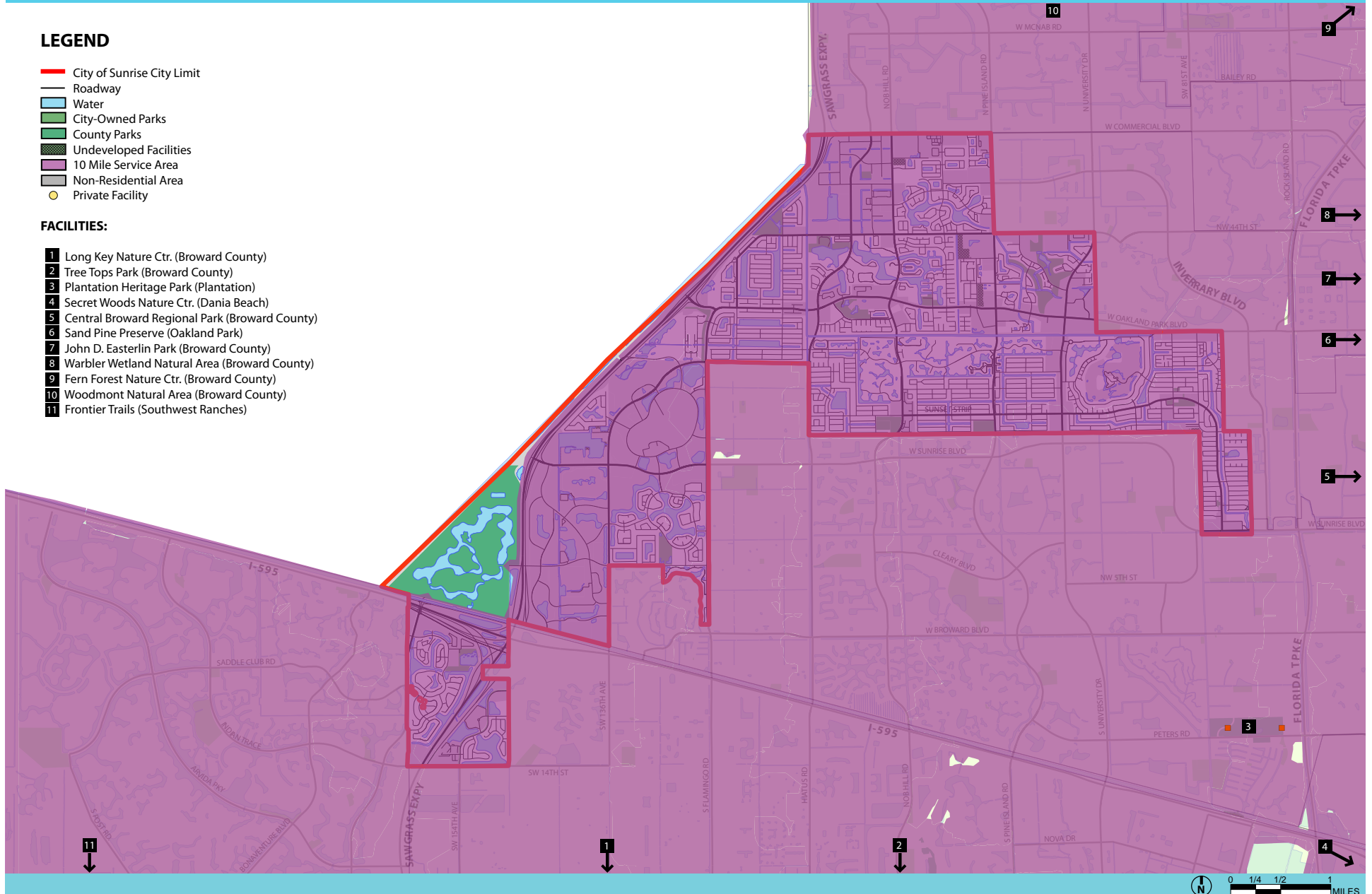


### LEGEND

- City of Sunrise City Limit
- Roadway
- Water
- City-Owned Parks
- County Parks
- Undeveloped Facilities
- 10 Mile Service Area
- Non-Residential Area
- Private Facility

### FACILITIES:

- 1 Long Key Nature Ctr. (Broward County)
- 2 Tree Tops Park (Broward County)
- 3 Plantation Heritage Park (Plantation)
- 4 Secret Woods Nature Ctr. (Dania Beach)
- 5 Central Broward Regional Park (Broward County)
- 6 Sand Pine Preserve (Oakland Park)
- 7 John D. Easterlin Park (Broward County)
- 8 Warbler Wetland Natural Area (Broward County)
- 9 Fern Forest Nature Ctr. (Broward County)
- 10 Woodmont Natural Area (Broward County)
- 11 Frontier Trails (Southwest Ranches)



## REGION | Camp Sites

**Figure 2.3q** illustrates that there are three (3) camping facilities within a ten (10) mile driving distance (one of which is Markham Park), and that the combined service areas from these facilities provide access for every Sunrise resident.



**Bird's eye view of a camping area at Markham Park**

Figure 2.3q Camp Site (10 Miles)



# REGION | Camp Site

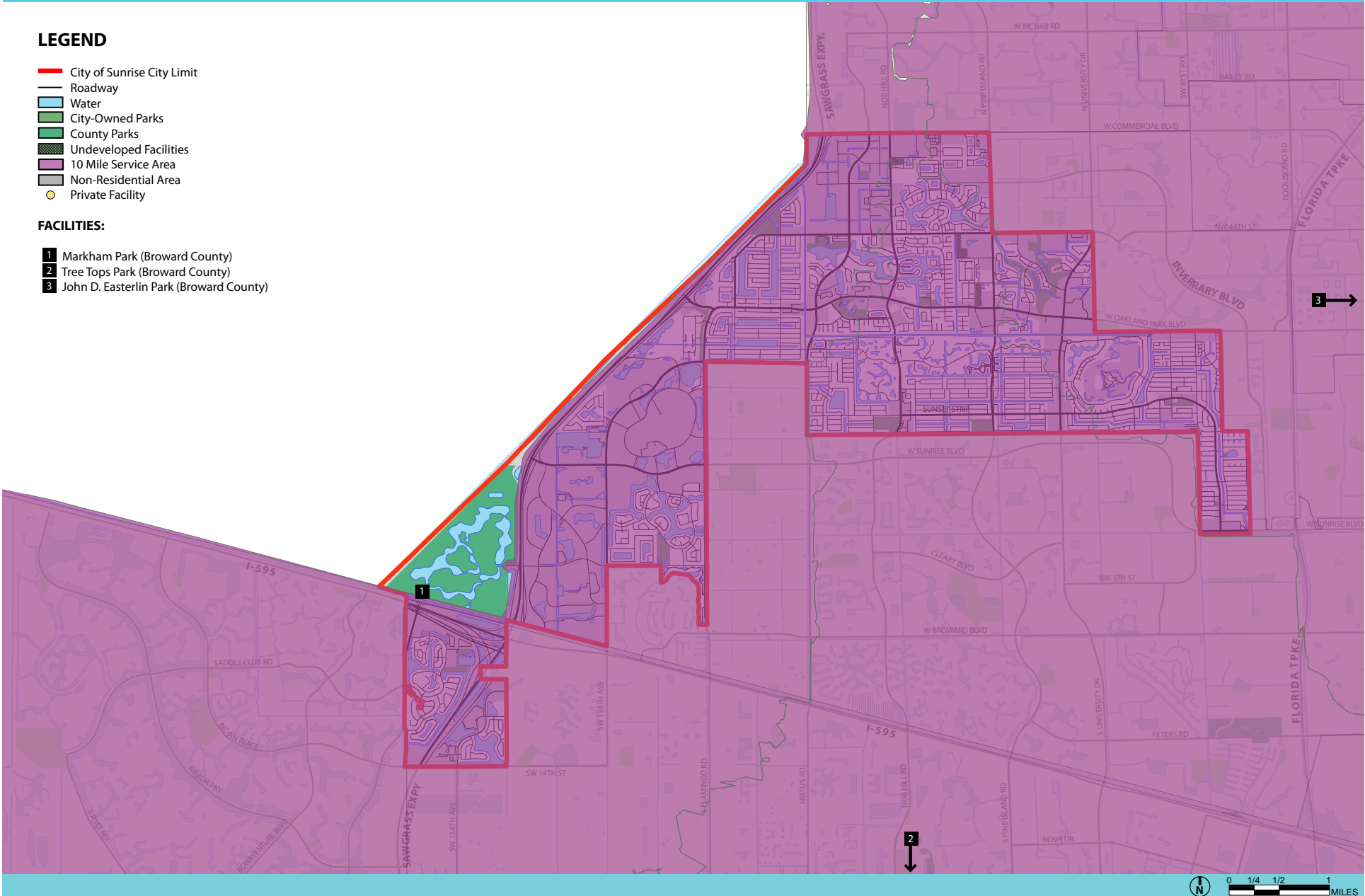
10 MILE SERVICE AREA OF PUBLIC FACILITIES

**LEGEND**

- City of Sunrise City Limit
- Roadway
- Water
- City-Owned Parks
- County Parks
- Undeveloped Facilities
- 10 Mile Service Area
- Non-Residential Area
- Private Facility

**FACILITIES:**

- 1 Markham Park (Broward County)
- 2 Tree Tops Park (Broward County)
- 3 John D. Easterlin Park (Broward County)



## REGION | Mountain Biking Trail LOS (10 Miles)

**Figure 2.3r** illustrates that there are two (2) mountain biking facilities within a 10 mile driving distance of Sunrise (one of which is Markham Park), and that the combined service areas from these facilities provide for over 90% of Sunrise residents. The only gaps in access occur in the far southeastern corner of the city.



**A mountain bike trail at Markham Park**

Figure 2.3r Mountain Bike Trail (10 Miles)

# REGION | Mountain Bike Trail

10 MILE SERVICE AREA OF PUBLIC FACILITIES

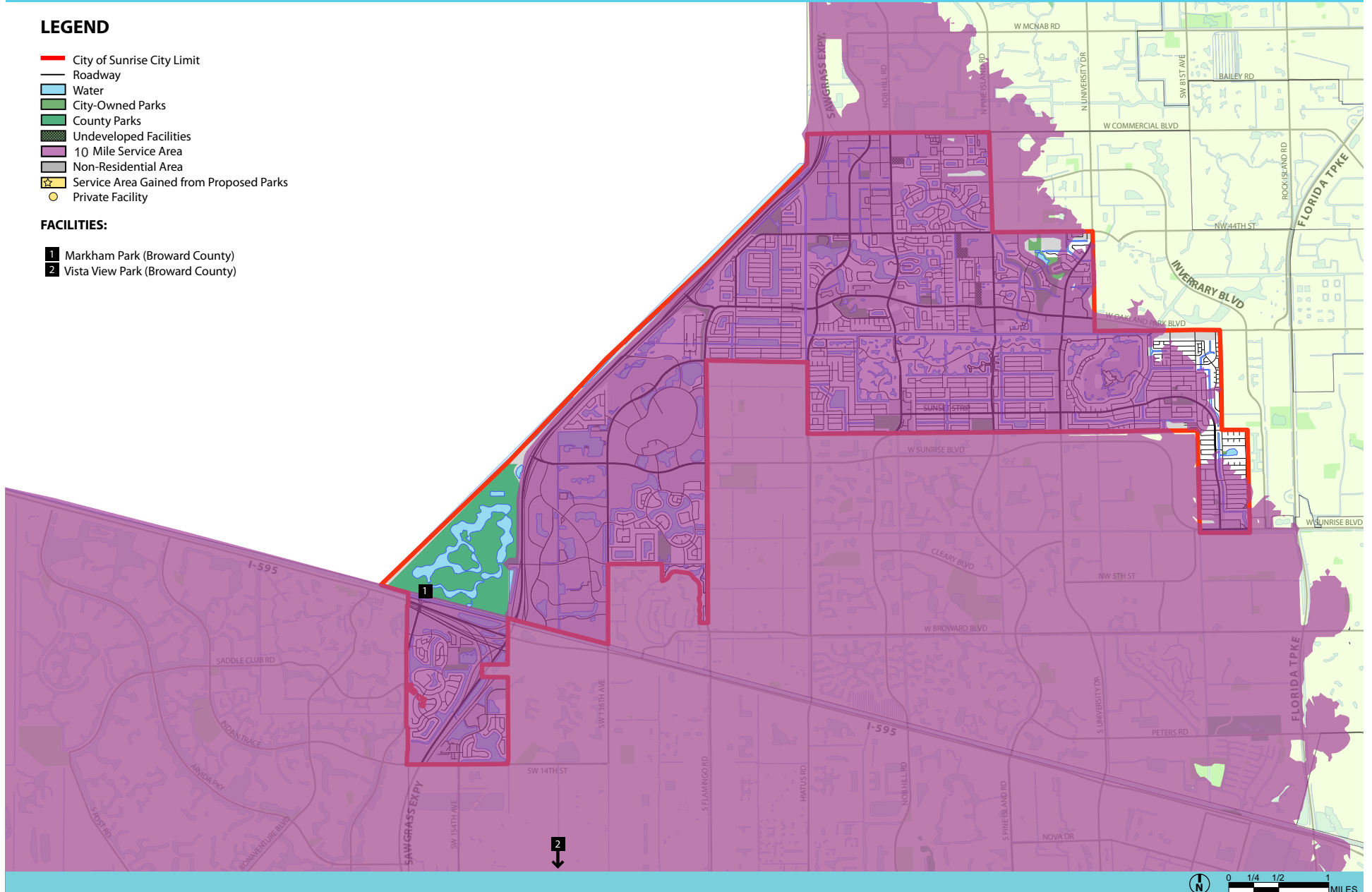


## LEGEND

- City of Sunrise City Limit
- Roadway
- Water
- City-Owned Parks
- County Parks
- Undeveloped Facilities
- 10 Mile Service Area
- Non-Residential Area
- Service Area Gained from Proposed Parks
- Private Facility

## FACILITIES:

- 1 Markham Park (Broward County)
- 2 Vista View Park (Broward County)



## REGION | Equestrian Facility LOS (10 Miles)

**Figure 2.3s** illustrates that the six (6) equestrian facilities located to the south of Sunrise are within a ten (10) mile driving distance and that the combined service areas from these facilities provide access for every resident within the city.



**A trail rider in Davie, FL**

Figure 2.3s Equestrian Facility (10 Miles)

# REGION | Equestrian Facility

10 MILE SERVICE AREA OF PUBLIC FACILITIES

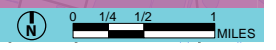
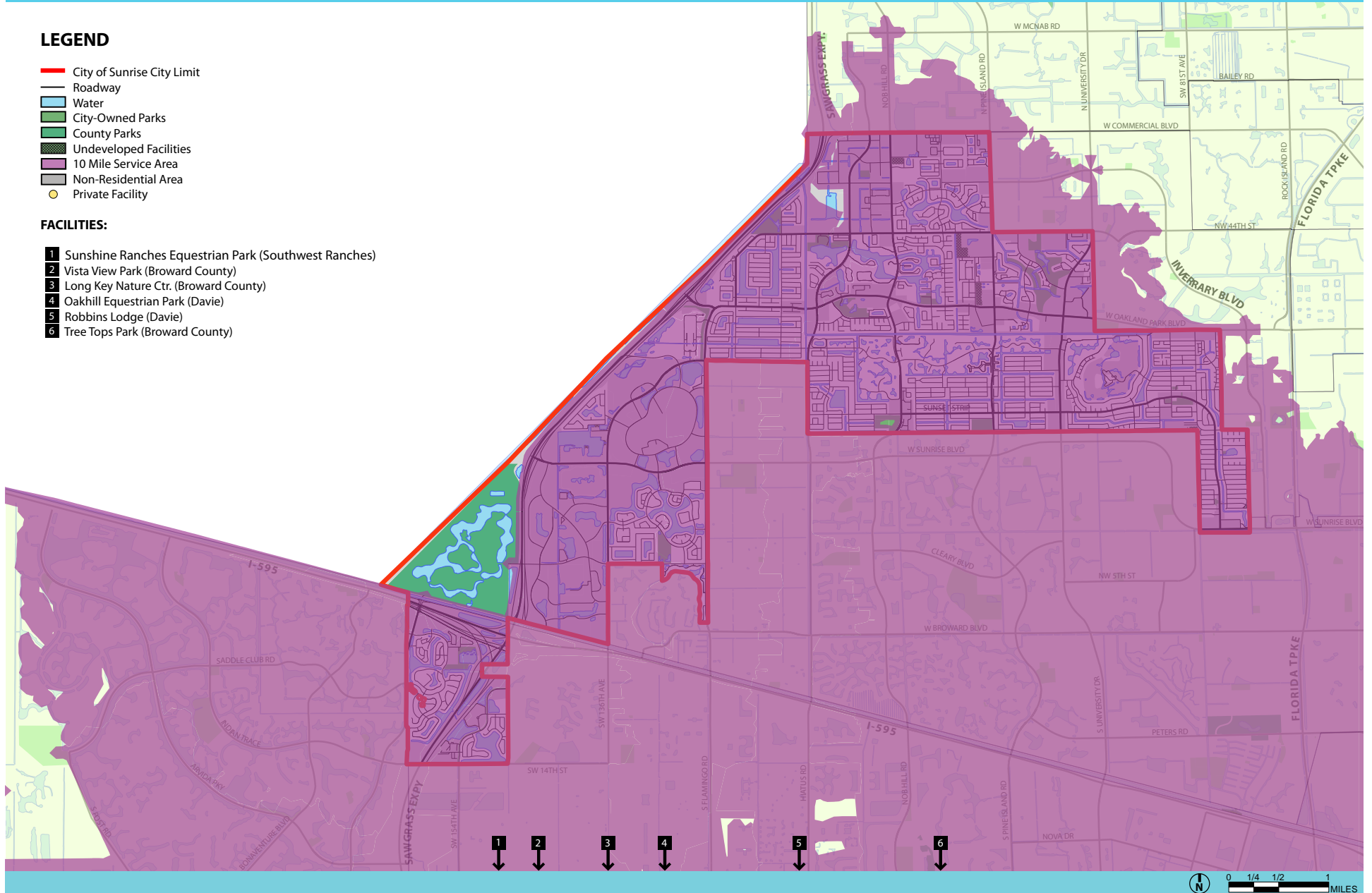


## LEGEND

- City of Sunrise City Limit
- Roadway
- Water
- City-Owned Parks
- County Parks
- Undeveloped Facilities
- 10 Mile Service Area
- Non-Residential Area
- Private Facility

## FACILITIES:

- 1 Sunshine Ranches Equestrian Park (Southwest Ranches)
- 2 Vista View Park (Broward County)
- 3 Long Key Nature Ctr. (Broward County)
- 4 Oakhill Equestrian Park (Davie)
- 5 Robbins Lodge (Davie)
- 6 Tree Tops Park (Broward County)





## REGION | Public Golf Course LOS (10 Miles)

**Figure 2.3t** illustrates that there are five (5) public golf courses within a ten (10) mile driving distance of the city, including the Springtree Golf Club owned by the City. The combined service areas from these facilities provide access for every Sunrise resident.

## SECTION 2.3 | Findings

According to the Facilities Access LOS study, Sunrise may be deficient in access to the following facilities:

### NEIGHBORHOOD FACILITIES (half mile walking distance):

- Passive Open Space
- Walking/Exercise Paths
- Basketball Courts
- Playgrounds
- Fishing Piers/Docks

### COMMUNITY FACILITIES (3 mile driving distance):

- Volleyball Courts
- Canoe/Kayak Launches
- Cricket Pitches
- Dog Parks
- Recreation Centers

### REGION FACILITIES (10 mile driving distance):

- Mountain Bike Trails



**Clubhouse at Springtree Golf Club**

Figure 2.3t Public Golf Course (3 Miles)

# REGION | Public Golf Course

## 10 MILE SERVICE AREA OF PUBLIC FACILITIES

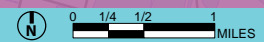
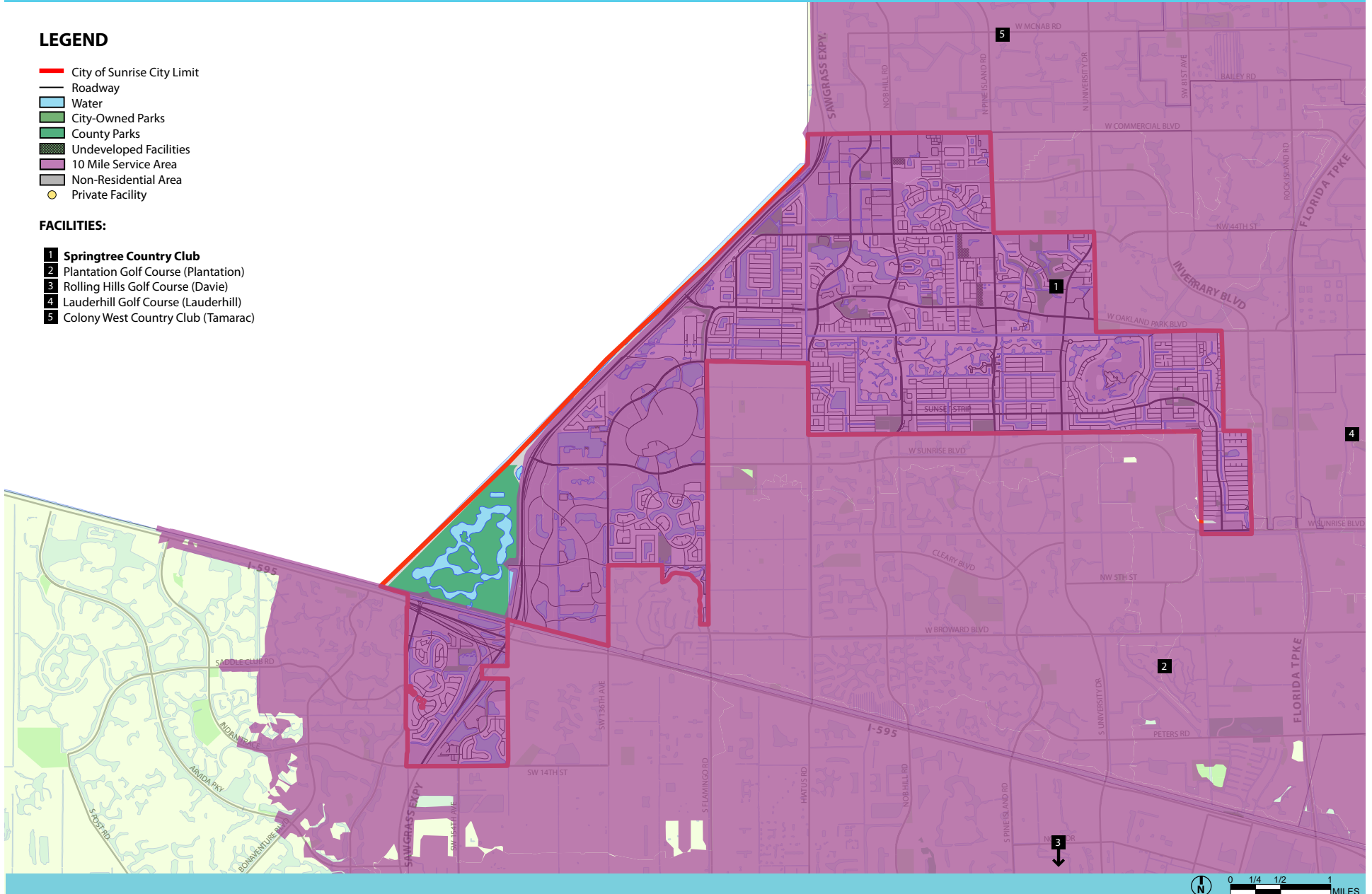


### LEGEND

- City of Sunrise City Limit
- Roadway
- Water
- City-Owned Parks
- County Parks
- Undeveloped Facilities
- 10 Mile Service Area
- Non-Residential Area
- Private Facility

### FACILITIES:

- 1** Springtree Country Club
- 2** Plantation Golf Course (Plantation)
- 3** Rolling Hills Golf Course (Davie)
- 4** Lauderdale Golf Course (Lauderhill)
- 5** Colony West Country Club (Tamarac)



## SECTION 2.4 | Programs Access:

*Every resident should have access to similar types of recreation programs, based on their community's specific needs.*

Program LOS is an expression of the distribution of recreation programming opportunities throughout a community, for all age groups. It goes hand-in-hand with Facility LOS and Access LOS, and it should be kept in mind that inequity in program opportunities may be a function of access or facilities, rather than program offerings. Programs access analyzes physical access to program offering locations and does not take into account accessibility in terms of program affordability, capacity, etc.

The City's program LOS is calculated based on a three (3) mile driving distance from where the program is offered. In a primarily suburban community such as Sunrise, residents typically anticipate having to drive to participate in a publicly offered program. While generally true, this assumption poses additional challenges for any resident that does not have reliable access to a vehicle for transportation, most significantly the children and the seniors.

The City's program offerings can be broken down into three, age-based categories:

- Youth Programs
- Adult Programs
- Senior Programs

### PROGRAMS | Youth LOS (3 Miles)

The City's youth program offerings are primarily athletics based, utilizing facilities that are distributed throughout the city. The following is a chart listing the programs offered and their location.

PROGRAM	LOCATIONS
Football	Sunrise Athletic Complex (SAC), Piper Field, Soccer Club Park
Soccer	Soccer Club Park, SAC, Piper Field
Swimming	Sunrise Civic Ctr., Welleby Pool, Roarke Pool, Village Beach Club
Baseball	Flamingo Park, SAC, Oscar Wind Park, Piper Field, City Park
Basketball	Sunrise Civic Center, Village Multi-Purpose Center, Bair Middle School, West Pine Middle School, Piper High School, Millenium Middle School
Tennis	Sunrise Tennis Club
Karate	Sunrise Civic Center
Roller Hockey	Roller Hockey Complex
Cheerleading	Sunrise Athletic Complex (SAC), Piper Field, Soccer Club Park
Art Instruction	Sunrise Civic Center
Dance/Baton	Sunrise Civic Center
Guitar	Sunrise Civic Center

**Figure 2.4a** illustrates that because of the relatively even distribution of program-offering facilities, every child in Sunrise is able to participate in a program within three (3) miles driving distance of their home. It should be noted however that not all programs are offered at every location, thus limiting the choices of the resident based on their geographic location within the city.

Figure 2.4a Youth Programs LOS (3 Miles)



# PROGRAMS | Youth

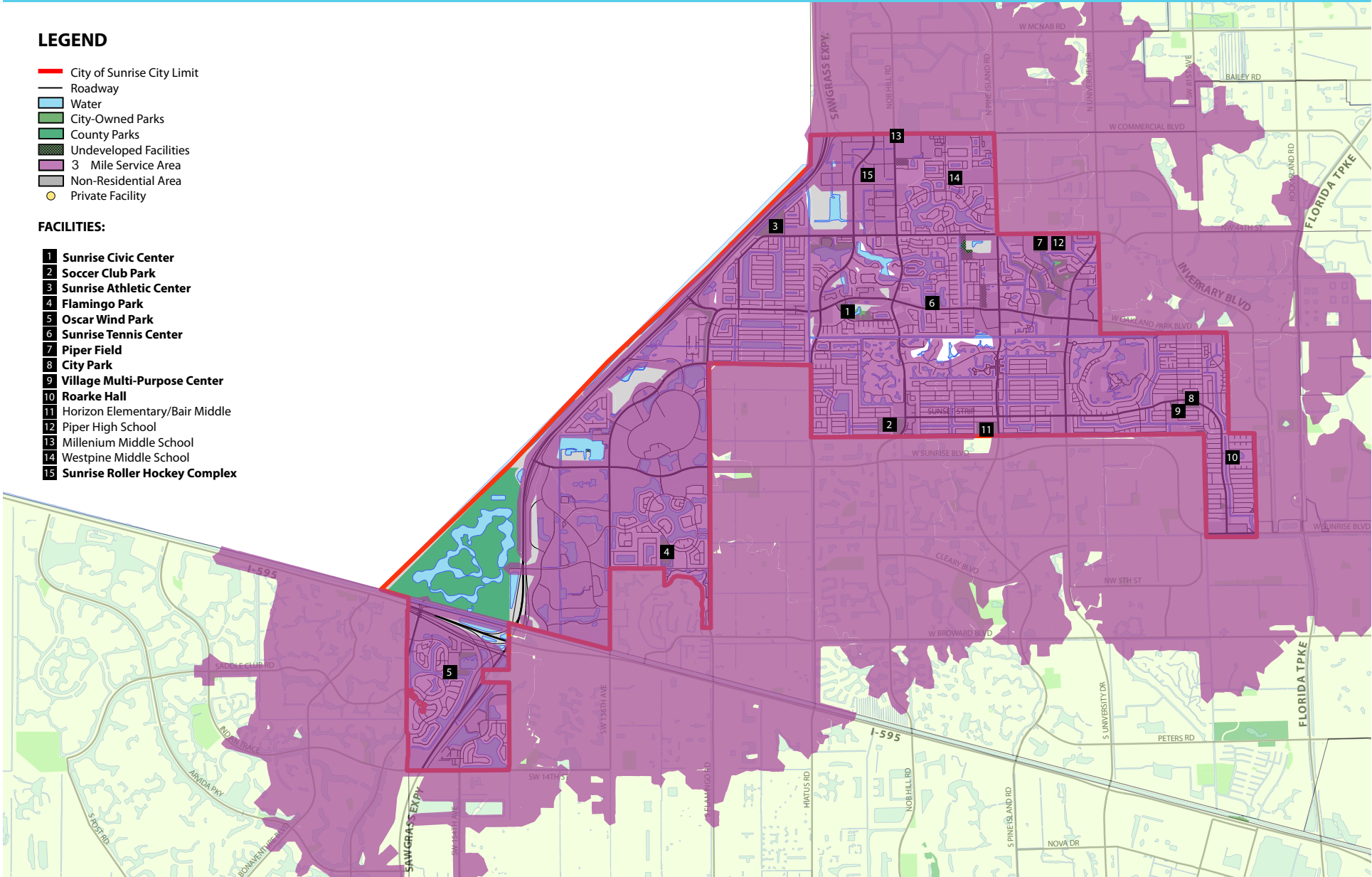
3 MILE SERVICE AREA OF BOTH PUBLIC AND PRIVATE FACILITIES

### LEGEND

- City of Sunrise City Limit
- Roadway
- Water
- City-Owned Parks
- County Parks
- Undeveloped Facilities
- 3 Mile Service Area
- Non-Residential Area
- Private Facility

### FACILITIES:

- 1** Sunrise Civic Center
- 2** Soccer Club Park
- 3** Sunrise Athletic Center
- 4** Flamingo Park
- 5** Oscar Wind Park
- 6** Sunrise Tennis Center
- 7** Piper Field
- 8** City Park
- 9** Village Multi-Purpose Center
- 10** Roarke Hall
- 11** Horizon Elementary/Bair Middle
- 12** Piper High School
- 13** Millenium Middle School
- 14** Westpine Middle School
- 15** Sunrise Roller Hockey Complex



## PROGRAMS | Adult LOS (3 Miles)

The City's adult program offerings are more diversified than those offered only to youth participants. The following chart shows which programs are offered for adults and the locations that the programs are based out of.

PROGRAM	LOCATIONS
Swimming	Sunrise Civic Center, Welleby Pool
Tennis	Sunrise Tennis Club
Yoga	Sunrise Civic Center
Fitness Training	Sunrise Civic Center
Jazzercise	Sunrise Civic Center
Red Cross Courses	Sunrise Civic Center
Scuba Diving	Sunrise Civic Center
Green Thumbs	Sunrise Senior Center
Painting	Sunrise Senior Center
Basketball	Sunrise Civic Center, Village Multipurpose Center

Currently the adult programs are only offered in four locations, all of which occur in the north-central portion of Sunrise. **Figure 2.4b** illustrates that because of the localization of the programs, residents living in the southern portions of the city are outside of the three (3) mile service area.

If the City wishes to expand their adult programs LOS, they may want to consider offering program locations in the southern portions of the city.

Figure 2.4b Adult Programs LOS (3 Miles)

# PROGRAMS | Adult

3 MILE SERVICE AREA PUBLIC FACILITIES

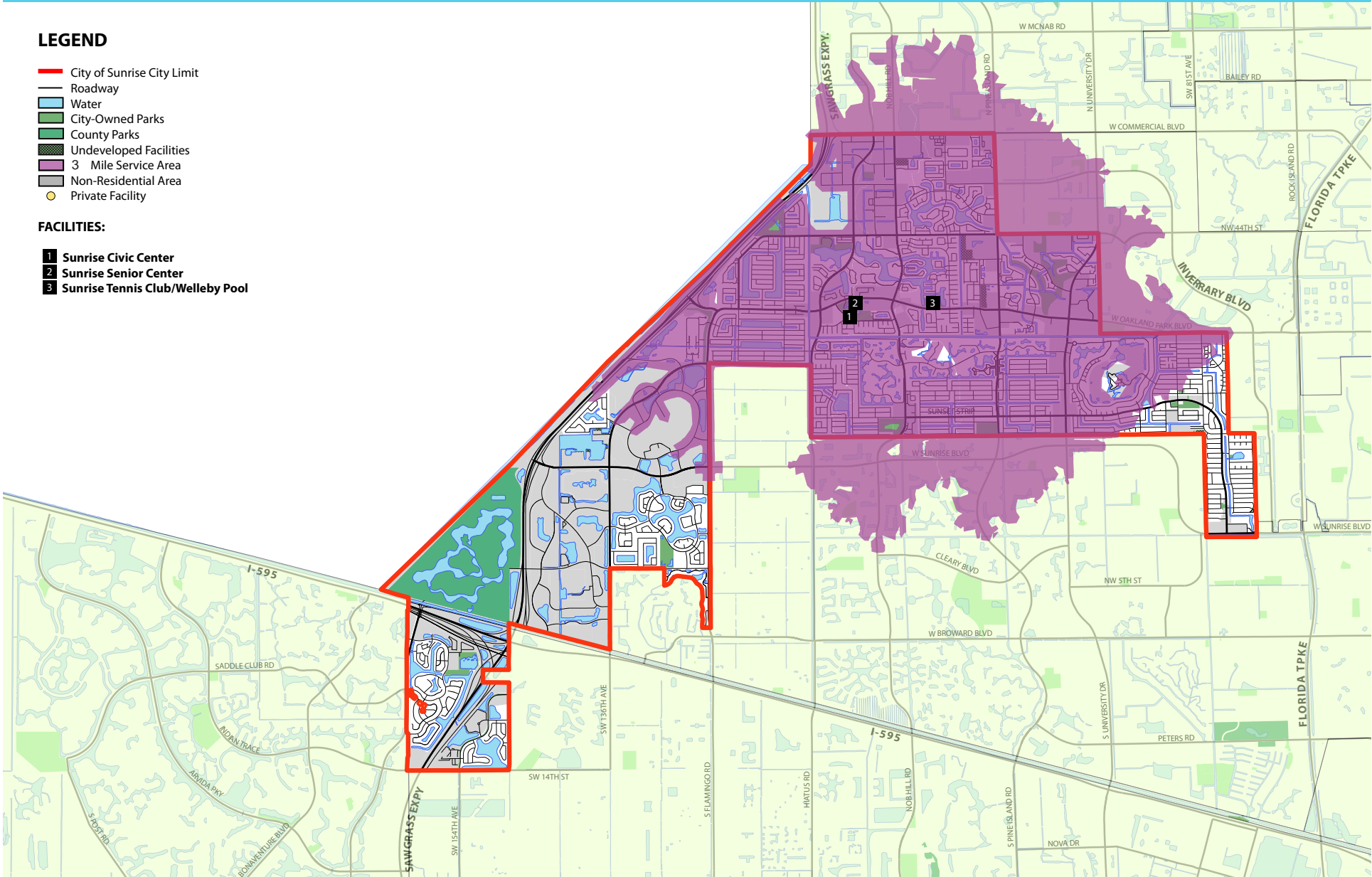


### LEGEND

- City of Sunrise City Limit
- Roadway
- Water
- City-Owned Parks
- County Parks
- Undeveloped Facilities
- 3 Mile Service Area
- Non-Residential Area
- Private Facility

### FACILITIES:

- 1 Sunrise Civic Center
- 2 Sunrise Senior Center
- 3 Sunrise Tennis Club/Welleby Pool



### PROGRAMS | Senior LOS (3 Miles)

The City’s senior program offerings are more educationally based than those offered for youths and adults. It should be noted though that there are no expressed age limits for any of the adult programs which could therefore serve seniors as well. The following chart shows which programs are offered specifically for seniors and the locations from which the programs are based.

PROGRAM	LOCATIONS
Tennis	Sunrise Tennis Club
Beading	Sunrise Senior Center
AARP Courses	Sunrise Senior Center
Fitness Training	Sunrise Civic Center
Swimming	Sunrise Civic Center
Green Thumbs	Sunrise Senior Center
Computer Skills	Sunrise Senior Center
Beginning Spanish	Sunrise Senior Center
ESOL	Sunrise Senior Center
Painting	Sunrise Senior Center
Scottish Dancing	Sunrise Senior Center

Similarly to the adult programs, those designed for seniors are only offered in four locations, all of which occur in the north-central portion of Sunrise. **Figure 2. 4c** illustrates that because of the localization of the programs, residents living in the southern portions of the city are outside of the three (3) mile service area.

If the City wishes to expand their senior programs LOS, they may want to consider offering program locations in the southern portions of the city.

### SECTION 2.4 | Findings

According to the Programs Access LOS study, the City of Sunrise is providing adequate access for youth recreation program participants, however it is deficient in its access of programs oriented towards both adults and seniors. It appears that the City offers a good selection of program types for both of these age groups but the locations are too centralized to serve all residents.

Figure 2.4c Senior Programs LOS (3 Miles)

# PROGRAMS | Senior

3 MILE SERVICE AREA PUBLIC FACILITIES

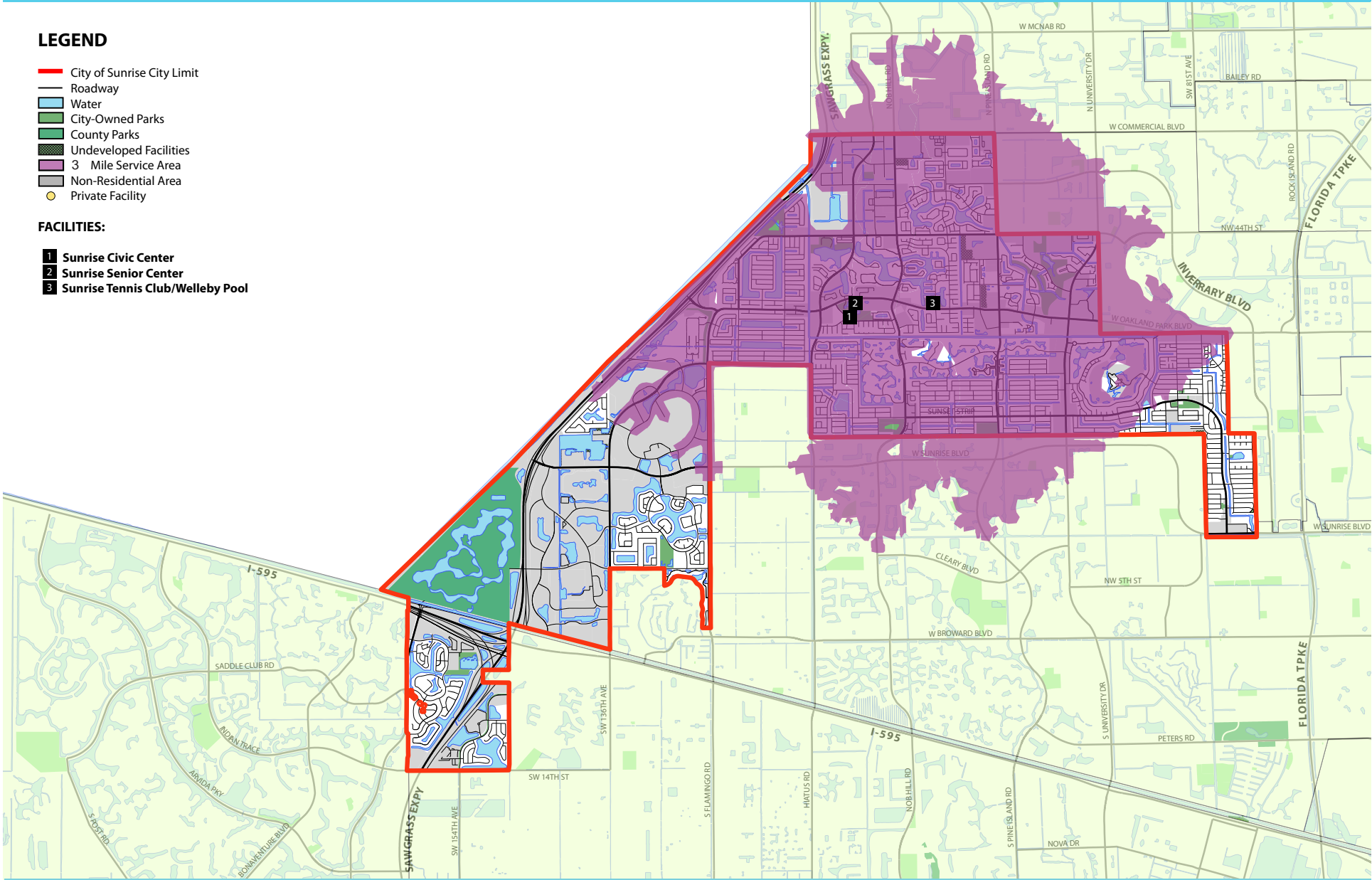


### LEGEND

- City of Sunrise City Limit
- Roadway
- Water
- City-Owned Parks
- County Parks
- Undeveloped Facilities
- 3 Mile Service Area
- Non-Residential Area
- Private Facility

### FACILITIES:

- 1 Sunrise Civic Center
- 2 Sunrise Senior Center
- 3 Sunrise Tennis Club/Welleby Pool





## SECTION 2.5 | Quality LOS

### Process:

As described in Section 1, each park was evaluated to help understand how well each park is serving the community. After each park was evaluated, it was assigned a score. The scores from all of the park facilities within the city were then tabulated (See Section 1, **Figure 1.1b**). This table allows us to see specific trends that are occurring in each category of the evaluation that are not readily identifiable by looking only at the overall score of each park.

### Summary:

#### Proximity/Access/Linkages:

- The strongest category in this section is “ease in walking to the park.” This is an excellent quality because many of the issues facing park systems are access related.
- The lowest scoring category was related to informational signage. The majority of Sunrise’s parks have entry/regulatory signage, but very few have unique and informative/interpretative signage.
- The majority of Sunrise’s parks are compatible with their surrounding uses.

#### Comfort & Image:

- Nearly all of Sunrise’s parks exceed expectations in the “Comfort and Image” section.
- Every category in this section had a score that “exceeds expectations,” demonstrating that the City values the high quality of its park system and makes ongoing effort to properly maintain and manage their investment.

### Uses, Activity, & Sociability:

- This section was the only one that did not have a single category score in the “exceeds expectations” range.
- The category “Mix of Things To Do” had the second lowest score in this section. This may be due to the high percentage of parks that are special use facilities which may indicate a need for additional, more flexible park space.

### Opportunities:

- This section had both the highest and lowest recorded average scores of the evaluation.
- The lowest score were in the category of “Evidence of Embraced Heritage Resources.” Although many of the parks in Sunrise are excellent in quality and design, few offer learning resources that pay homage to the heritage of the site or the city itself.
- The highest recorded score in the evaluation was in the “Evidence of Maintenance Standards.”

## SECTION 2.5 | Findings

**Figure 2.5a** shows that the majority of the facilities that “exceed expectations” as defined in Section 1, are aggregated in the center of the Northern portion of Sunrise while the facilities that are “meeting expectations” or “not meeting expectations” are located closer to the city limit. This localization of facilities may be an indicator of an inequity in the distribution of quality parks facilities throughout the city.

- All three of the facilities that are “not meeting expectations” are located in the southeastern corner of the city.
- Based on the parks evaluation, the average park in Sunrise is “meeting the expectations” of its users.
- Of the City’s twenty-two (22) parks, 40% of those are currently ranked in the highest category of “exceeding expectations.” The facility with the highest recorded score is the Sunrise Civic Center.
- 86% of the City’s parks are either meeting or exceeding expectations.

Figure 2.5a Distribution of Quality

# EXISTING PARKS AND RECREATION SYSTEM | Distribution of Quality



**LEGEND**

- City of Sunrise
- Water
- Roadway
- City-Owned Parks
- County Parks
- Undeveloped Facilities

**EXCEEDS EXPECTATIONS**

- 1 Flamingo Park
- 2 Nob Hill Park
- 3 Sawgrass Sanctuary
- 4 Sunrise Athletics Complex
- 5 Sunrise Civic Center
- 6 Sunrise Senior Center
- 7 Sunrise Tennis Club Park
- 8 Village Multi-Purpose Center
- 9 Welleby Passive Park

**MEETS EXPECTATIONS**

- 10 City Park
- 11 Flamingo Road Linear Park
- 12 New River Civic Center
- 13 Oscar Wind Park
- 14 Piper Field
- 15 Roark Pool
- 16 Roller Hockey Park
- 17 Shotgun Road Linear Park
- 18 Springtree Country Club
- 19 Village Beach Club

**DOES NOT MEET EXPECTATIONS**

- 20 12th Street Park
- 21 Golf Village Park
- 22 Village Square Park

